

# Monthly Monitoring Data

**Environmental Protection Licence Number:** 12693

**link to EPL12693 on EPA Public Register:** [Click Here](#)

**Licensee:** Newcastle Coal Infrastructure Group Pty Ltd, Locked Bag 6003, Hunter Region Mail Centre NSW 2310

**Premises:** Newcastle Coal Infrastructure Group, Cormorant Road, Kooragang NSW 2304

**Date Published:** 11 March 2020

**Note:** On the 25<sup>th</sup> of August 2017 an amendment was made to the NCIG Environmental Protection Licence (EPL12693) which removed the requirement for ambient air quality monitoring at Points 7-10 and 14-15. However, NCIG will continue to publish ambient air quality data for these locations previously listed in EPL12693 for the interest of the public.

## Depositional Dust Monitoring

**Sample Period:** 10 January 2019 – 7 February 2020

**Date Obtained:** 21 February 2020

**Units of Measure:** Grams per square metre per month (g/m<sup>2</sup>/month)

**Frequency:** Monthly

	Monitoring Point 7 - DG3 (Kooragang Island)	Monitoring Point 8 - DG4 (Mayfield Sport Rec Club)	Monitoring Point 9 - DG5 (Mayfield West)	Monitoring Point 10 - DG6 (Sandgate)
<b>Depositional Dust</b>	3.0	2.5	3.2	2.3

## High Volume Air Sampling

**Date Obtained:** 21 February 2020

**Units of measure:** Micrograms per cubic metre (µg/m<sup>3</sup>)

**Frequency:** Weekly

	Monitoring Point 14 - HVAS 1 (Steel River, Mayfield West)			Monitoring Point 15 - HVAS 2 (Crebert Street, Mayfield)			
	TSP	PM10		TSP		PM10	
<b>03-Jan-20</b>	64	<b>03-Jan-20</b>	34	<b>03-Jan-20</b>	76	<b>03-Jan-20</b>	39
<b>09-Jan-20</b>	49	<b>09-Jan-20</b>	ND	<b>09-Jan-20</b>	49	<b>09-Jan-20</b>	31
<b>15-Jan-20</b>	35	<b>15-Jan-20</b>	17	<b>15-Jan-20</b>	34	<b>15-Jan-20</b>	17
<b>21-Jan-20</b>	76	<b>21-Jan-20</b>	37	<b>21-Jan-20</b>	98*	<b>21-Jan-20</b>	43
<b>27-Jan-20</b>	53	<b>27-Jan-20</b>	32	<b>27-Jan-20</b>	62	<b>27-Jan-20</b>	40

NB: Sample period is a 24-hour period on each of the above dates | TSP = Total Suspended Particulates | PM10 = Particulate Matter <10 microns

ND – No data available on 9 January 2020 due to instrument malfunction

\* Elevated result – the predominant wind direction on this day was from a NW direction

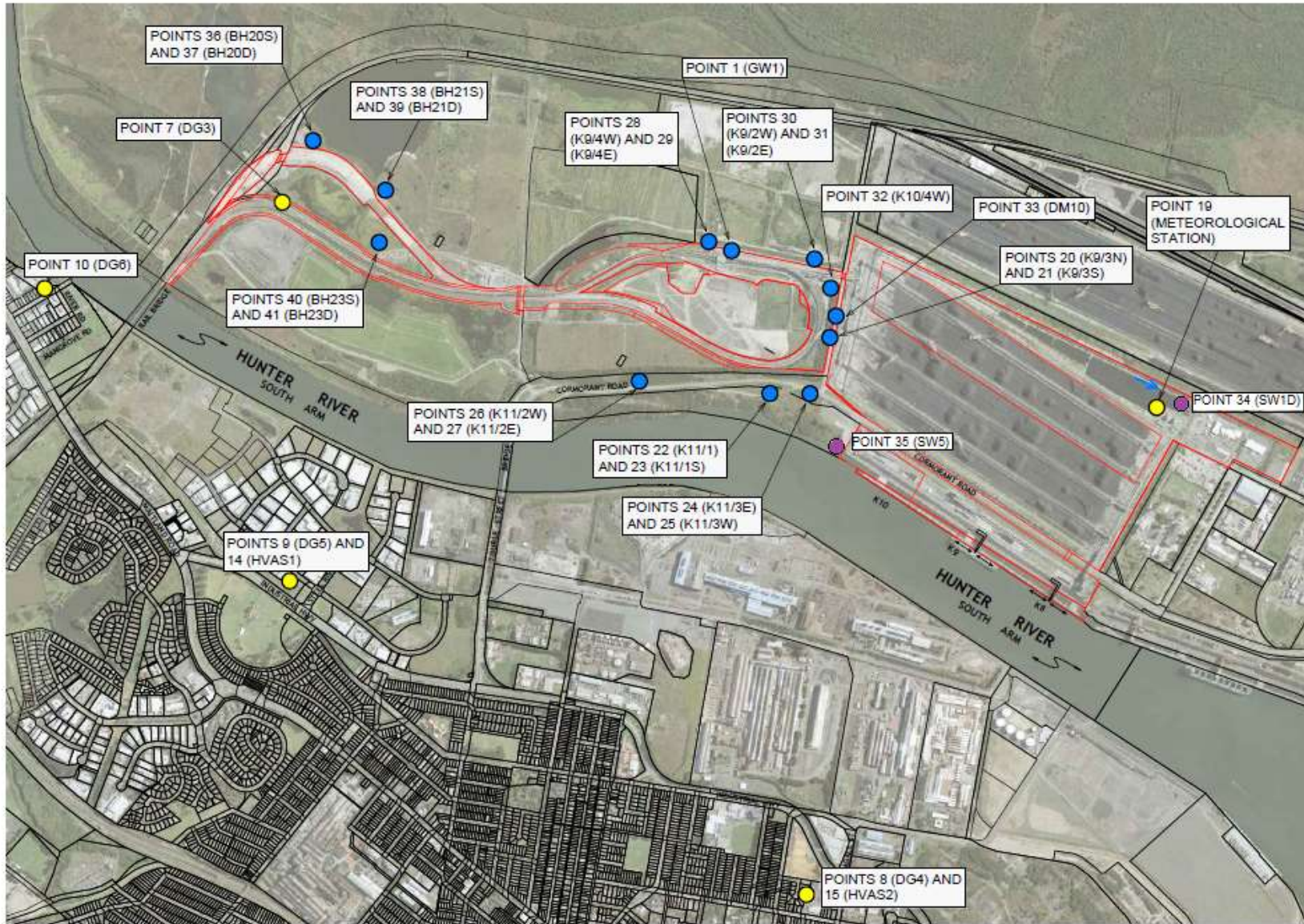


Figure 1: Groundwater, Surface Water and Additional Ambient Air Quality Monitoring Locations.