

Monthly Monitoring Data

Environmental Protection Licence Number: 12693

link to EPL12693 on EPA Public Register: [Click Here](#)

Licensee: Newcastle Coal Infrastructure Group Pty Ltd, Locked Bag 6003, Hunter Region Mail Centre NSW 2310

Premises: Newcastle Coal Infrastructure Group, Cormorant Road, Kooragang NSW 2304

Date Published: 12 August 2019

Note: On the 25th of August 2017 an amendment was made to the NCIG Environmental Protection Licence (EPL12693) which removed the requirement for ambient air quality monitoring at Points 7-10 and 14-15. However, NCIG will continue to publish ambient air quality data for these locations previously listed in EPL12693 for the interest of the public.

Depositional Dust Monitoring

Sample Period: 7 June 2019 – 3 July 2019

Date Obtained: 23 July 2019

Units of Measure: Grams per square metre per month (g/m²/month)

Frequency: Monthly

| | Monitoring Point 7 - DG3 (Kooragang Island) | Monitoring Point 8 - DG4 (Mayfield Sport Rec Club) | Monitoring Point 9 - DG5 (Mayfield West) | Monitoring Point 10 - DG6 (Sandgate) |
|--------------------------|--|---|---|---|
| Depositional Dust | 3.2 | 0.4 | 0.8 | 1.2 |

High Volume Air Sampling

Date Obtained: 23 July 2019

Units of measure: Micrograms per cubic metre (µg/m³)

Frequency: Weekly

| | Monitoring Point 14 - HVAS 1 (Steel River) | | | | Monitoring Point 15 - HVAS 2 (Crebert Street) | | | |
|------------------|--|------------------|------|------------------|---|------------------|------|--|
| | TSP | | PM10 | | TSP | | PM10 | |
| 01-Jun 19 | 38 | 01-Jun 19 | 18 | 01-Jun 19 | 44 | 01-Jun 19 | 17 | |
| 07-Jun 19 | 37 | 07-Jun 19 | 17 | 11-Jun 19 | 37 | 07-Jun 19 | 20 | |
| 13-Jun 19 | 52 | 13-Jun 19 | 17 | 13-Jun 19 | 43 | 13-Jun 19 | 15 | |
| 19-Jun 19 | 25 | 19-Jun 19 | 10 | 22-Jun 19 | 16 | 19-Jun 19 | 6 | |
| 25-Jun 19 | 11 | 25-Jun 19 | 5 | 25-Jun 19 | 9 | 25-Jun 19 | 54 | |

NB. Sample period is a 24-hour period on each of the above dates | TSP = Total Suspended Particulates | PM10 = Particulate Matter <10 microns

6 Monthly Groundwater Monitoring

Results Received: 23rd July 2019

Date Published: 12th August 2019

Groundwater Sampling Point 1 (GW1)

Sample Date: 20th June 2019

Units of Measure: pH units; milligrams per litre (mg/L); microSiemens per centimetre ($\mu\text{S}/\text{cm}$); micrograms per litre ($\mu\text{g}/\text{L}$)

| Pollutant | Units of Measure | Frequency | Recorded Value |
|---------------------|-------------------------|----------------|----------------|
| pH | pH units | Every 6 Months | 7.5 |
| Conductivity | $\mu\text{S}/\text{cm}$ | Every 6 Months | 12800 |
| Bromide | mg/L | Every 6 Months | 6.13 |
| Aluminium | mg/L | Every 6 Months | <0.01 |
| Arsenic | mg/L | Every 6 Months | <0.001 |
| Cadmium | mg/L | Every 6 Months | <0.0001 |
| Copper | mg/L | Every 6 Months | <0.001 |
| Manganese | mg/L | Every 6 Months | 0.252 |
| Nickel | mg/L | Every 6 Months | <0.001 |
| Zinc | mg/L | Every 6 Months | 0.006 |
| Iron | mg/L | Every 6 Months | <0.05 |
| Total PAH | $\mu\text{g}/\text{L}$ | Every 6 Months | <0.5 |
| TPH C6-9 Fraction | $\mu\text{g}/\text{L}$ | Every 6 Months | <20 |
| TPH C10-14 Fraction | $\mu\text{g}/\text{L}$ | Every 6 Months | <50 |
| TPH C15-28 Fraction | $\mu\text{g}/\text{L}$ | Every 6 Months | <100 |
| TPH C29-36 Fraction | $\mu\text{g}/\text{L}$ | Every 6 Months | <50 |
| Cyanide (free) | mg/L | Every 6 Months | <0.004 |
| Cyanide (total) | mg/L | Every 6 Months | 0.007 |

Groundwater Sampling Point 38 (BH21S)**Sample Date:** 20th June 2019**Units of Measure:** pH units; milligrams per litre (mg/L); microSiemens per centimetre ($\mu\text{S}/\text{cm}$); micrograms per litre ($\mu\text{g}/\text{L}$)

| Pollutant | Units of Measure | Frequency | Recorded Value |
|---------------------|-------------------------|----------------|----------------|
| pH | pH units | Every 6 Months | 11.15 |
| Conductivity | $\mu\text{S}/\text{cm}$ | Every 6 Months | 1200 |
| Bromide | mg/L | Every 6 Months | 0.765 |
| Aluminium | mg/L | Every 6 Months | 1.2 |
| Arsenic | mg/L | Every 6 Months | 0.005 |
| Cadmium | mg/L | Every 6 Months | 0.0002 |
| Copper | mg/L | Every 6 Months | <0.001 |
| Manganese | mg/L | Every 6 Months | 0.099 |
| Nickel | mg/L | Every 6 Months | 0.005 |
| Zinc | mg/L | Every 6 Months | 0.011 |
| Iron | mg/L | Every 6 Months | 0.73 |
| Total PAH | $\mu\text{g}/\text{L}$ | Every 6 Months | 307 |
| TPH C6-9 Fraction | $\mu\text{g}/\text{L}$ | Every 6 Months | 30 |
| TPH C10-14 Fraction | $\mu\text{g}/\text{L}$ | Every 6 Months | 380 |
| TPH C15-28 Fraction | $\mu\text{g}/\text{L}$ | Every 6 Months | 470 |
| TPH C29-36 Fraction | $\mu\text{g}/\text{L}$ | Every 6 Months | 200 |
| Cyanide (free) | mg/L | Every 6 Months | 0.005 |
| Cyanide (total) | mg/L | Every 6 Months | 0.264 |

Groundwater Sampling Point 39 (BH21D)**Sample Date:** 20th June 2019**Units of Measure:** pH units; milligrams per litre (mg/L); microSiemens per centimetre ($\mu\text{S}/\text{cm}$); micrograms per litre ($\mu\text{g}/\text{L}$)

| Pollutant | Units of Measure | Frequency | Recorded Value |
|---------------------|-------------------------|----------------|----------------|
| pH | pH units | Every 6 Months | 8.95 |
| Conductivity | $\mu\text{S}/\text{cm}$ | Every 6 Months | 5240 |
| Bromide | mg/L | Every 6 Months | 4.08 |
| Aluminium | mg/L | Every 6 Months | 0.1 |
| Arsenic | mg/L | Every 6 Months | 0.003 |
| Cadmium | mg/L | Every 6 Months | 0.0003 |
| Copper | mg/L | Every 6 Months | <0.001 |
| Manganese | mg/L | Every 6 Months | 0.151 |
| Nickel | mg/L | Every 6 Months | 0.004 |
| Zinc | mg/L | Every 6 Months | <0.005 |
| Iron | mg/L | Every 6 Months | 0.17 |
| Total PAH | $\mu\text{g}/\text{L}$ | Every 6 Months | 241 |
| TPH C6-9 Fraction | $\mu\text{g}/\text{L}$ | Every 6 Months | 30 |
| TPH C10-14 Fraction | $\mu\text{g}/\text{L}$ | Every 6 Months | 360 |
| TPH C15-28 Fraction | $\mu\text{g}/\text{L}$ | Every 6 Months | 130 |
| TPH C29-36 Fraction | $\mu\text{g}/\text{L}$ | Every 6 Months | <50 |
| Cyanide (free) | mg/L | Every 6 Months | 0.008 |
| Cyanide (total) | mg/L | Every 6 Months | 0.368 |

Groundwater Sampling Point 20 (K9/3N)**Sample Date:** 20th June 2019**Units of Measure:** pH units; milligrams per litre (mg/L); microSiemens per centimetre ($\mu\text{S}/\text{cm}$); micrograms per litre ($\mu\text{g}/\text{L}$)

| Pollutant | Units of Measure | Frequency | Recorded Value | Exceedance (Yes/No)* |
|---------------------|-------------------------|----------------|----------------|----------------------|
| pH | pH units | Every 6 Months | 7.08 | No |
| Conductivity | $\mu\text{S}/\text{cm}$ | Every 6 Months | 24500 | No |
| Bromide | mg/L | Every 6 Months | 16.2 | No |
| Aluminium | mg/L | Every 6 Months | <0.01 | No |
| Arsenic | mg/L | Every 6 Months | 0.002 | No |
| Cadmium | mg/L | Every 6 Months | 0.0001 | No |
| Copper | mg/L | Every 6 Months | <0.001 | No |
| Manganese | mg/L | Every 6 Months | 1.24 | No |
| Nickel | mg/L | Every 6 Months | 0.005 | Yes |
| Zinc | mg/L | Every 6 Months | <0.005 | No |
| Iron | mg/L | Every 6 Months | 0.08 | No |
| Total PAH | $\mu\text{g}/\text{L}$ | Every 6 Months | <0.5 | No |
| TPH C6-9 Fraction | $\mu\text{g}/\text{L}$ | Every 6 Months | <20 | No |
| TPH C10-14 Fraction | $\mu\text{g}/\text{L}$ | Every 6 Months | <50 | No |
| TPH C15-28 Fraction | $\mu\text{g}/\text{L}$ | Every 6 Months | <100 | No |
| TPH C29-36 Fraction | $\mu\text{g}/\text{L}$ | Every 6 Months | <50 | No |
| Cyanide (free) | mg/L | Every 6 Months | <0.004 | No |
| Cyanide (total) | mg/L | Every 6 Months | 0.009 | No |

Note: If trigger level is exceeded, actions listed in Condition E1.2 of EPL12693 are to be followed. These actions include notifying the EPA and resampling the location to confirm the elevated concentration.

* Trigger Condition 1 and 2 recalculated each sampling round- value not shown in table.

Groundwater Sampling Point 21 (K9/3S)**Sample Date:** 20th June 2019**Units of Measure:** pH units; milligrams per litre (mg/L); microSiemens per centimetre ($\mu\text{S}/\text{cm}$); micrograms per litre ($\mu\text{g}/\text{L}$)

| Pollutant | Units of Measure | Frequency | Recorded Value | Exceedance (Yes/No)* |
|---------------------|-------------------------|----------------|----------------|----------------------|
| pH | pH units | Every 6 Months | 8.1 | No |
| Conductivity | $\mu\text{S}/\text{cm}$ | Every 6 Months | 5360 | No |
| Bromide | mg/L | Every 6 Months | 3.72 | No |
| Aluminium | mg/L | Every 6 Months | <0.01 | No |
| Arsenic | mg/L | Every 6 Months | 0.004 | No |
| Cadmium | mg/L | Every 6 Months | <0.0001 | No |
| Copper | mg/L | Every 6 Months | <0.001 | No |
| Manganese | mg/L | Every 6 Months | 0.166 | No |
| Nickel | mg/L | Every 6 Months | <0.001 | No |
| Zinc | mg/L | Every 6 Months | 0.01 | No |
| Iron | mg/L | Every 6 Months | <0.05 | No |
| Total PAH | $\mu\text{g}/\text{L}$ | Every 6 Months | <0.5 | No |
| TPH C6-9 Fraction | $\mu\text{g}/\text{L}$ | Every 6 Months | <20 | No |
| TPH C10-14 Fraction | $\mu\text{g}/\text{L}$ | Every 6 Months | <50 | No |
| TPH C15-28 Fraction | $\mu\text{g}/\text{L}$ | Every 6 Months | <100 | No |
| TPH C29-36 Fraction | $\mu\text{g}/\text{L}$ | Every 6 Months | <50 | No |
| Cyanide (free) | mg/L | Every 6 Months | <0.004 | No |
| Cyanide (total) | mg/L | Every 6 Months | <0.004 | No |

Note: If trigger level is exceeded, actions listed in Condition E1.2 of EPL12693 are to be followed. These actions include notifying the EPA and resampling the location to confirm the elevated concentration.

* Trigger Condition 1 and 2 recalculated each sampling round- value not shown in table.

Groundwater Sampling Point 22 (K11/1)**Sample Date:** 20th June 2019**Units of Measure:** pH units; milligrams per litre (mg/L); microSiemens per centimetre ($\mu\text{S}/\text{cm}$); micrograms per litre ($\mu\text{g}/\text{L}$)

| Pollutant | Units of Measure | Frequency | Recorded Value | Exceedance (Yes/No)* |
|---------------------|-------------------------|----------------|----------------|----------------------|
| pH | pH units | Every 6 Months | 7.44 | No |
| Conductivity | $\mu\text{S}/\text{cm}$ | Every 6 Months | 2280 | No |
| Bromide | mg/L | Every 6 Months | 1.38 | No |
| Aluminium | mg/L | Every 6 Months | <0.01 | No |
| Arsenic | mg/L | Every 6 Months | 0.002 | No |
| Cadmium | mg/L | Every 6 Months | <0.0001 | No |
| Copper | mg/L | Every 6 Months | <0.001 | No |
| Manganese | mg/L | Every 6 Months | 0.784 | No |
| Nickel | mg/L | Every 6 Months | 0.001 | No |
| Zinc | mg/L | Every 6 Months | 0.007 | No |
| Iron | mg/L | Every 6 Months | 0.11 | No |
| Total PAH | $\mu\text{g}/\text{L}$ | Every 6 Months | <0.5 | No |
| TPH C6-9 Fraction | $\mu\text{g}/\text{L}$ | Every 6 Months | <20 | No |
| TPH C10-14 Fraction | $\mu\text{g}/\text{L}$ | Every 6 Months | <50 | No |
| TPH C15-28 Fraction | $\mu\text{g}/\text{L}$ | Every 6 Months | <100 | No |
| TPH C29-36 Fraction | $\mu\text{g}/\text{L}$ | Every 6 Months | <50 | No |
| Cyanide (free) | mg/L | Every 6 Months | <0.004 | No |
| Cyanide (total) | mg/L | Every 6 Months | <0.004 | No |

Note: If trigger level is exceeded, actions listed in Condition E1.2 of EPL12693 are to be followed. These actions include notifying the EPA and resampling the location to confirm the elevated concentration.

* Trigger Condition 1 and 2 recalculated each sampling round- value not shown in table.

Groundwater Sampling Point 23 (K11/1S)**Sample Date:** 20th June 2019**Units of Measure:** pH units; milligrams per litre (mg/L); microSiemens per centimetre ($\mu\text{S}/\text{cm}$); micrograms per litre ($\mu\text{g}/\text{L}$)

| Pollutant | Units of Measure | Frequency | Recorded Value | Exceedance (Yes/No)* |
|---------------------|-------------------------|----------------|----------------|----------------------|
| pH | pH units | Every 6 Months | 7.87 | No |
| Conductivity | $\mu\text{S}/\text{cm}$ | Every 6 Months | 10300 | No |
| Bromide | mg/L | Every 6 Months | 4.63 | No |
| Aluminium | mg/L | Every 6 Months | <0.01 | No |
| Arsenic | mg/L | Every 6 Months | 0.002 | No |
| Cadmium | mg/L | Every 6 Months | <0.0001 | No |
| Copper | mg/L | Every 6 Months | <0.001 | No |
| Manganese | mg/L | Every 6 Months | 0.123 | No |
| Nickel | mg/L | Every 6 Months | 0.003 | No |
| Zinc | mg/L | Every 6 Months | <0.005 | No |
| Iron | mg/L | Every 6 Months | 0.06 | No |
| Total PAH | $\mu\text{g}/\text{L}$ | Every 6 Months | <0.5 | No |
| TPH C6-9 Fraction | $\mu\text{g}/\text{L}$ | Every 6 Months | <20 | No |
| TPH C10-14 Fraction | $\mu\text{g}/\text{L}$ | Every 6 Months | <50 | No |
| TPH C15-28 Fraction | $\mu\text{g}/\text{L}$ | Every 6 Months | <100 | No |
| TPH C29-36 Fraction | $\mu\text{g}/\text{L}$ | Every 6 Months | <50 | No |
| Cyanide (free) | mg/L | Every 6 Months | <0.004 | No |
| Cyanide (total) | mg/L | Every 6 Months | 0.024 | Yes |

Note: If trigger level is exceeded, actions listed in Condition E1.2 of EPL12693 are to be followed. These actions include notifying the EPA and resampling the location to confirm the elevated concentration.

* Trigger Condition 1 and 2 recalculated each sampling round- value not shown in table.

Groundwater Sampling Point 36 (BH20S)**Sample Date:** 20th June 2019**Units of Measure:** pH units; milligrams per litre (mg/L); microSiemens per centimetre ($\mu\text{S}/\text{cm}$); micrograms per litre ($\mu\text{g}/\text{L}$)

| Pollutant | Units of Measure | Frequency | Recorded Value | Exceedance (Yes/No)* |
|---------------------|-------------------------|----------------|----------------|----------------------|
| pH | pH units | Every 6 Months | 6.84 | No |
| Conductivity | $\mu\text{S}/\text{cm}$ | Every 6 Months | 4390 | No |
| Bromide | mg/L | Every 6 Months | 1.3 | No |
| Aluminium | mg/L | Every 6 Months | <0.01 | No |
| Arsenic | mg/L | Every 6 Months | 0.013 | Yes |
| Cadmium | mg/L | Every 6 Months | <0.0001 | No |
| Copper | mg/L | Every 6 Months | <0.001 | No |
| Manganese | mg/L | Every 6 Months | 5.47 | No |
| Nickel | mg/L | Every 6 Months | 0.002 | No |
| Zinc | mg/L | Every 6 Months | <0.005 | No |
| Iron | mg/L | Every 6 Months | 14.2 | Yes |
| Total PAH | $\mu\text{g}/\text{L}$ | Every 6 Months | 1.7 | No |
| TPH C6-9 Fraction | $\mu\text{g}/\text{L}$ | Every 6 Months | <20 | No |
| TPH C10-14 Fraction | $\mu\text{g}/\text{L}$ | Every 6 Months | <50 | No |
| TPH C15-28 Fraction | $\mu\text{g}/\text{L}$ | Every 6 Months | <100 | No |
| TPH C29-36 Fraction | $\mu\text{g}/\text{L}$ | Every 6 Months | <50 | No |
| Cyanide (free) | mg/L | Every 6 Months | <0.004 | No |
| Cyanide (total) | mg/L | Every 6 Months | <0.004 | No |

Note: If trigger level is exceeded, actions listed in Condition E1.2 of EPL12693 are to be followed. These actions include notifying the EPA and resampling the location to confirm the elevated concentration.

* Trigger Condition 1 and 2 recalculated each sampling round- value not shown in table.

Groundwater Sampling Point 37 (BH20D)**Sample Date:** 20th June 2019**Units of Measure:** pH units; milligrams per litre (mg/L); microSiemens per centimetre ($\mu\text{S}/\text{cm}$); micrograms per litre ($\mu\text{g}/\text{L}$)

| Pollutant | Units of Measure | Frequency | Recorded Value | Exceedance (Yes/No)* |
|---------------------|-------------------------|----------------|----------------|----------------------|
| pH | pH units | Every 6 Months | 6.11 | No |
| Conductivity | $\mu\text{S}/\text{cm}$ | Every 6 Months | 46000 | No |
| Bromide | mg/L | Every 6 Months | 45.6 | No |
| Aluminium | mg/L | Every 6 Months | <0.10 | No |
| Arsenic | mg/L | Every 6 Months | <0.010 | No |
| Cadmium | mg/L | Every 6 Months | <0.0010 | No |
| Copper | mg/L | Every 6 Months | <0.010 | No |
| Manganese | mg/L | Every 6 Months | 12.3 | Yes |
| Nickel | mg/L | Every 6 Months | 0.043 | No |
| Zinc | mg/L | Every 6 Months | <0.050 | No |
| Iron | mg/L | Every 6 Months | 49 | No |
| Total PAH | $\mu\text{g}/\text{L}$ | Every 6 Months | <0.5 | No |
| TPH C6-9 Fraction | $\mu\text{g}/\text{L}$ | Every 6 Months | <20 | No |
| TPH C10-14 Fraction | $\mu\text{g}/\text{L}$ | Every 6 Months | <50 | No |
| TPH C15-28 Fraction | $\mu\text{g}/\text{L}$ | Every 6 Months | <100 | No |
| TPH C29-36 Fraction | $\mu\text{g}/\text{L}$ | Every 6 Months | <50 | No |
| Cyanide (free) | mg/L | Every 6 Months | <0.004 | No |
| Cyanide (total) | mg/L | Every 6 Months | <0.004 | No |

Note: If trigger level is exceeded, actions listed in Condition E1.2 of EPL12693 are to be followed. These actions include notifying the EPA and resampling the location to confirm the elevated concentration.

* Trigger Condition 1 and 2 recalculated each sampling round- value not shown in table.

Groundwater Sampling Point 40 (BH23S)**Sample Date:** 19th June 2019**Units of Measure:** pH units; milligrams per litre (mg/L); microSiemens per centimetre ($\mu\text{S}/\text{cm}$); micrograms per litre ($\mu\text{g}/\text{L}$)

| Pollutant | Units of Measure | Frequency | Recorded Value | Exceedance (Yes/No)* |
|---------------------|-------------------------|----------------|----------------|----------------------|
| pH | pH units | Every 6 Months | 8.01 | No |
| Conductivity | $\mu\text{S}/\text{cm}$ | Every 6 Months | 711 | No |
| Bromide | mg/L | Every 6 Months | 16.5 | Yes |
| Aluminium | mg/L | Every 6 Months | <0.01 | No |
| Arsenic | mg/L | Every 6 Months | 0.003 | No |
| Cadmium | mg/L | Every 6 Months | <0.0001 | No |
| Copper | mg/L | Every 6 Months | <0.001 | No |
| Manganese | mg/L | Every 6 Months | 0.939 | No |
| Nickel | mg/L | Every 6 Months | 0.006 | No |
| Zinc | mg/L | Every 6 Months | 0.012 | No |
| Iron | mg/L | Every 6 Months | 13.5 | Yes |
| Total PAH | $\mu\text{g}/\text{L}$ | Every 6 Months | <0.5 | No |
| TPH C6-9 Fraction | $\mu\text{g}/\text{L}$ | Every 6 Months | <20 | No |
| TPH C10-14 Fraction | $\mu\text{g}/\text{L}$ | Every 6 Months | <50 | No |
| TPH C15-28 Fraction | $\mu\text{g}/\text{L}$ | Every 6 Months | <100 | No |
| TPH C29-36 Fraction | $\mu\text{g}/\text{L}$ | Every 6 Months | <50 | No |
| Cyanide (free) | mg/L | Every 6 Months | <0.004 | No |
| Cyanide (total) | mg/L | Every 6 Months | 0.044 | No |

Note: If trigger level is exceeded, actions listed in Condition E1.2 of EPL12693 are to be followed. These actions include notifying the EPA and resampling the location to confirm the elevated concentration.

* Trigger Condition 1 and 2 recalculated each sampling round- value not shown in table.

Groundwater Sampling Point 41 (BH23D)**Sample Date:** 19th June 2019**Units of Measure:** pH units; milligrams per litre (mg/L); microSiemens per centimetre ($\mu\text{S}/\text{cm}$); micrograms per litre ($\mu\text{g}/\text{L}$)

| Pollutant | Units of Measure | Frequency | Recorded Value | Exceedance (Yes/No)* |
|---------------------|-------------------------|----------------|----------------|----------------------|
| pH | pH units | Every 6 Months | 6.45 | Yes |
| Conductivity | $\mu\text{S}/\text{cm}$ | Every 6 Months | 19900 | No |
| Bromide | mg/L | Every 6 Months | 0.264 | No |
| Aluminium | mg/L | Every 6 Months | 0.07 | No |
| Arsenic | mg/L | Every 6 Months | 0.006 | Yes |
| Cadmium | mg/L | Every 6 Months | <0.0001 | No |
| Copper | mg/L | Every 6 Months | <0.001 | No |
| Manganese | mg/L | Every 6 Months | 0.419 | No |
| Nickel | mg/L | Every 6 Months | 0.005 | No |
| Zinc | mg/L | Every 6 Months | <0.005 | No |
| Iron | mg/L | Every 6 Months | 2.49 | No |
| Total PAH | $\mu\text{g}/\text{L}$ | Every 6 Months | <0.5 | No |
| TPH C6-9 Fraction | $\mu\text{g}/\text{L}$ | Every 6 Months | <20 | No |
| TPH C10-14 Fraction | $\mu\text{g}/\text{L}$ | Every 6 Months | <50 | No |
| TPH C15-28 Fraction | $\mu\text{g}/\text{L}$ | Every 6 Months | <100 | No |
| TPH C29-36 Fraction | $\mu\text{g}/\text{L}$ | Every 6 Months | <50 | No |
| Cyanide (free) | mg/L | Every 6 Months | 0.007 | No |
| Cyanide (total) | mg/L | Every 6 Months | 0.095 | Yes |

Note: If trigger level is exceeded, actions listed in Condition E1.2 of EPL12693 are to be followed. These actions include notifying the EPA and resampling the location to confirm the elevated concentration.

* Trigger Condition 1 and 2 recalculated each sampling round- value not shown in table.

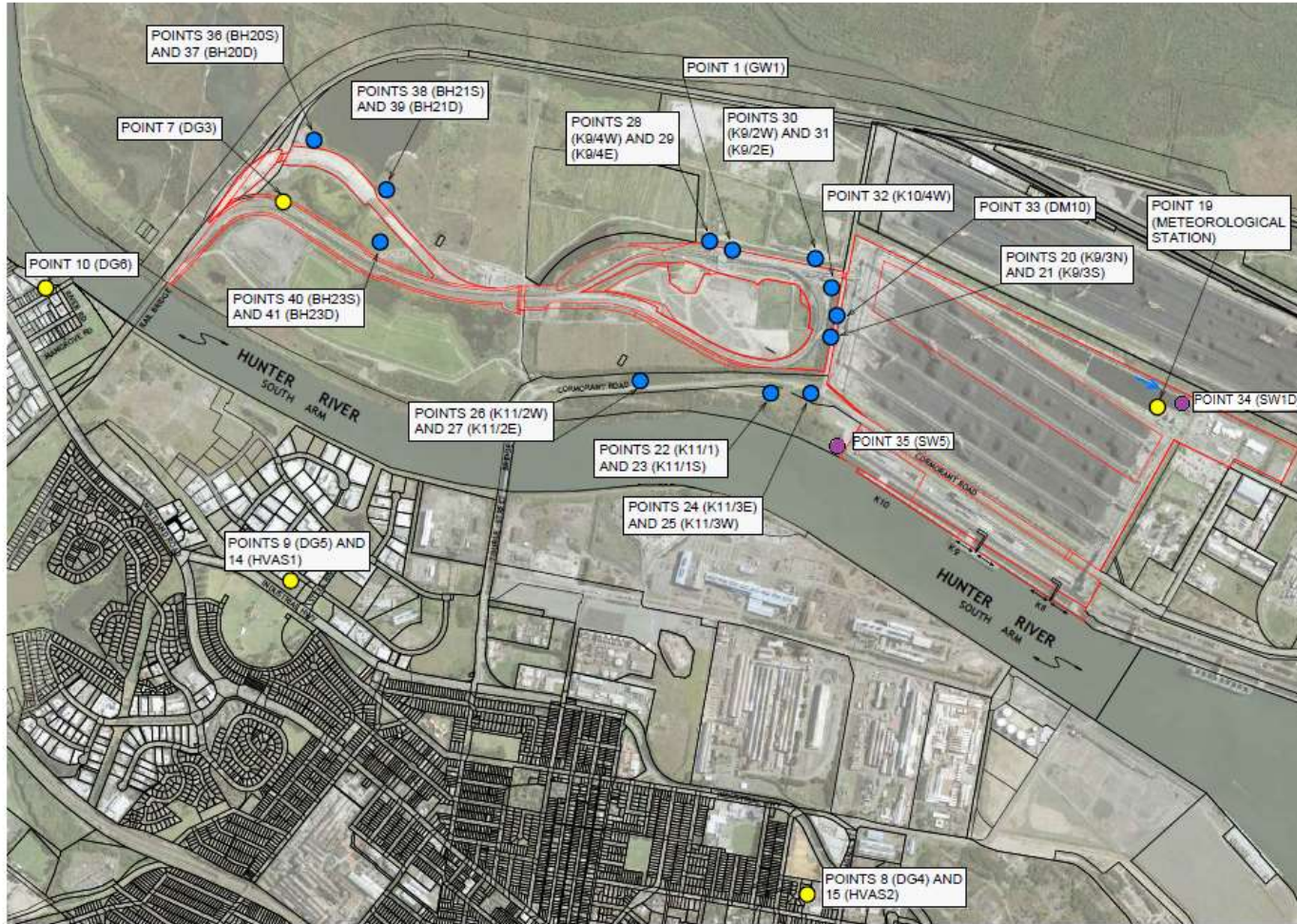


Figure 1: Groundwater, Surface Water and Additional Ambient Air Quality Monitoring Locations.