

# Monthly Monitoring Data

**Environmental Protection Licence Number:** 12693

**link to EPL12693 on EPA Public Register:** [Click Here](#)

**Licensee:** Newcastle Coal Infrastructure Group Pty Ltd, Locked Bag 6003, Hunter Region Mail Centre NSW 2310

**Premises:** Newcastle Coal Infrastructure Group, Cormorant Road, Kooragang NSW 2304

**Date Published:** 13 July 2020

**Note:** On the 25<sup>th</sup> of August 2017 an amendment was made to the NCIG Environmental Protection Licence (EPL12693) which removed the requirement for ambient air quality monitoring at Points 7-10 and 14-15. However, NCIG will continue to publish ambient air quality data for these locations previously listed in EPL12693 for the interest of the public.

## Depositional Dust Monitoring

**Sample Period:** 4 May 2020 – 5 June 2020

**Date Obtained:** 25 June 2020

**Units of Measure:** Grams per square metre per month (g/m<sup>2</sup>/month)

**Frequency:** Monthly

	DG 2 (Stockton)	Monitoring Point 7 - DG3 (Kooragang Island)	Monitoring Point 8 - DG4 (Mayfield Sport Rec Club)	Monitoring Point 9 - DG5 (Mayfield West)	Monitoring Point 10 - DG6 (Sandgate)
<b>Depositional Dust</b>	0.7	1.2	0.5	0.5	0.8

## High Volume Air Sampling

**Date Obtained:** 25 June 2020

**Units of measure:** Micrograms per cubic metre (µg/m<sup>3</sup>)

**Frequency:** Weekly

	Monitoring Point 14 - HVAS 1 (Steel River, Mayfield West)			Monitoring Point 15 - HVAS 2 (Crebert Street, Mayfield)			
	TSP	PM10		TSP		PM10	
<b>02-May-20</b>	45	<b>02-May-20</b>	14	<b>02-May-20</b>	44	<b>02-May-20</b>	13
<b>08-May-20</b>	41	<b>08-May-20</b>	21	<b>08-May-20</b>	48	<b>08-May-20</b>	24
<b>14-May-20</b>	31	<b>14-May-20</b>	17	<b>14-May-20</b>	24	<b>14-May-20</b>	12
<b>20-May-20</b>	22	<b>20-May-20</b>	12	<b>20-May-20</b>	28	<b>20-May-20</b>	14
<b>26-May-20</b>	24	<b>26-May-20</b>	14	<b>26-May-20</b>	28	<b>26-May-20</b>	13

NB: Sample period is a 24-hour period on each of the above dates | TSP = Total Suspended Particulates | PM10 = Particulate Matter <10 microns

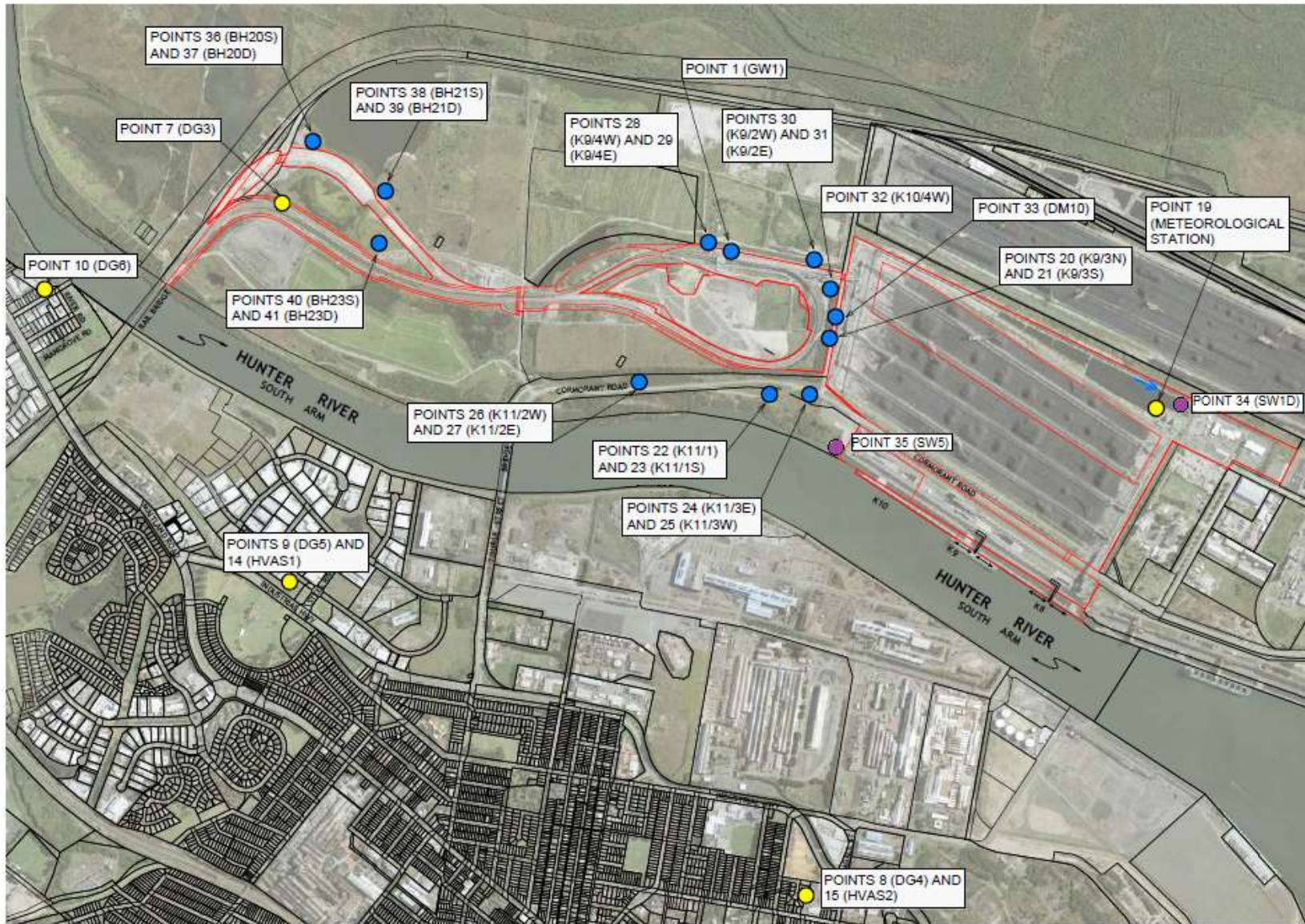


Figure 1: Groundwater, Surface Water and Additional Ambient Air Quality Monitoring Locations.