

# Monthly Monitoring Data

**Environmental Protection Licence Number:** 12693

**link to EPL12693 on EPA Public Register:** [Click Here](#)

**Licensee:** Newcastle Coal Infrastructure Group Pty Ltd, Locked Bag 6003, Hunter Region Mail Centre NSW 2310

**Premises:** Newcastle Coal Infrastructure Group, Cormorant Road, Kooragang NSW 2304

**Date Data Obtained:** 24 November 2020

**Date Published:** 11 December 2020

**Note:** On the 25<sup>th</sup> of August 2017 an amendment was made to the NCIG Environmental Protection Licence (EPL12693) which removed the requirement for ambient air quality monitoring at Points 7-10 and 14-15. However, NCIG will continue to publish ambient air quality data for these locations previously listed in EPL12693 for the interest of the public.

## Depositional Dust Monitoring

**Sample Period:** 9 October 2020 – 9 November 2020

**Units of Measure:** Insoluble Solids (grams per square metre per month (g/m<sup>2</sup>/month))

**Frequency:** Monthly

	DG2 (Stockton)	Monitoring Point 7 - DG3 (Kooragang Island)	Monitoring Point 8 - DG4 (Mayfield Sport Rec Club)	Monitoring Point 9 - DG5 (Mayfield West)	Monitoring Point 10 - DG6 (Sandgate)
<b>Depositional Dust</b>	2.0	0.9	0.7	1.0	1.5

## High Volume Air Sampling

**Units of measure:** Micrograms per cubic metre (µg/m<sup>3</sup>)

**Frequency:** Weekly

	Monitoring Point 14 - HVAS 1 (Steel River, Mayfield West)			Monitoring Point 15 - HVAS 2 (Crebert Street, Mayfield)			
	TSP	PM10		TSP		PM10	
<b>05-Oct-20</b>	42	<b>05-Oct-20</b>	22	<b>05-Oct-20</b>	48	<b>05-Oct-20</b>	24
<b>11-Oct-20</b>	34	<b>11-Oct-20</b>	15	<b>11-Oct-20</b>	30	<b>11-Oct-20</b>	17
<b>17-Oct-20</b>	59	<b>17-Oct-20</b>	25	<b>17-Oct-20</b>	50	<b>17-Oct-20</b>	23
<b>23-Oct-20</b>	41	<b>23-Oct-20</b>	19	<b>23-Oct-20</b>	36	<b>23-Oct-20</b>	15
<b>29-Oct-20</b>	19	<b>29-Oct-20</b>	8	<b>29-Oct-20</b>	13	<b>29-Oct-20</b>	7

NB: Sample period is a 24-hour period on each of the above dates | TSP = Total Suspended Particulates | PM10 = Particulate Matter <10 microns

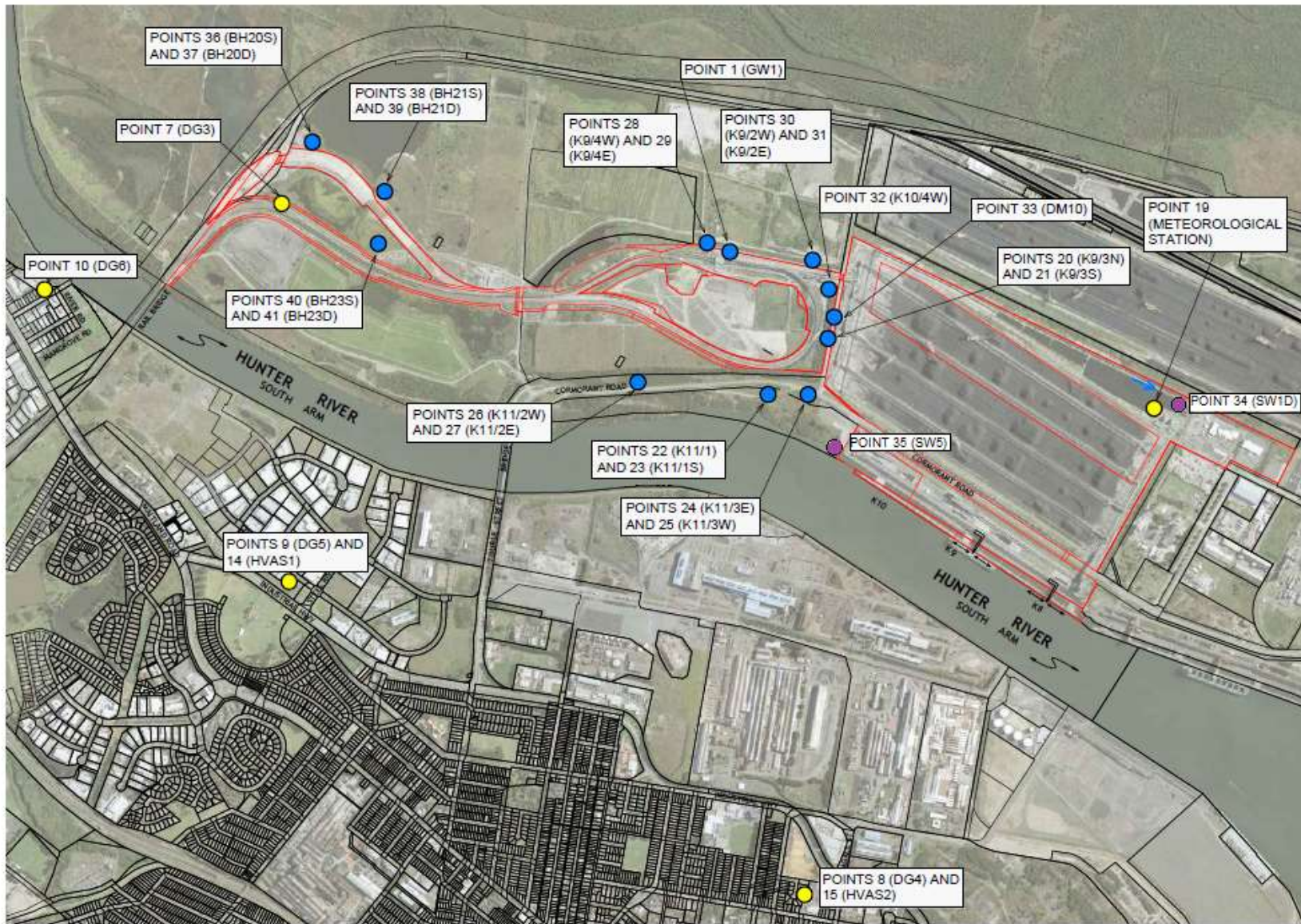


Figure 1: Groundwater, Surface Water and Additional Ambient Air Quality Monitoring Locations