

Monthly Monitoring Data

Environmental Protection Licence Number: 12693

link to EPL12693 on EPA Public Register: [Click Here](#)

Licensee: Newcastle Coal Infrastructure Group Pty Ltd, Locked Bag 6003, Hunter Region Mail Centre NSW 2310

Premises: Newcastle Coal Infrastructure Group, Cormorant Road, Kooragang NSW 2304

Date Published: 24 December 2019

Note: On the 25th of August 2017 an amendment was made to the NCIG Environmental Protection Licence (EPL12693) which removed the requirement for ambient air quality monitoring at Points 7-10 and 14-15. However, NCIG will continue to publish ambient air quality data for these locations previously listed in EPL12693 for the interest of the public.

Depositional Dust Monitoring

Sample Period: 10 October 2019 – 7 November 2019

Date Obtained: 19 December 2019

Units of Measure: Grams per square metre per month (g/m²/month)

Frequency: Monthly

	Monitoring Point 7 - DG3 (Kooragang Island)	Monitoring Point 8 - DG4 (Mayfield Sport Rec Club)	Monitoring Point 9 - DG5 (Mayfield West)	Monitoring Point 10 - DG6 (Sandgate)
Depositional Dust	1.5	2.3	1.3	3.2

High Volume Air Sampling

Date Obtained: 19 December 2019

Units of measure: Micrograms per cubic metre (µg/m³)

Frequency: Weekly

	Monitoring Point 14 - HVAS 1 (Steel River)			Monitoring Point 15 - HVAS 2 (Crebert Street)			
	TSP	PM10		TSP		PM10	
05-Oct 19	37	05-Oct 19	14	05-Oct 19	34	05-Oct 19	16
11-Oct 19	21	11-Oct 19	8	11-Oct 19	19	11-Oct 19	10
17-Oct 19	69	17-Oct 19	24	17-Oct 19	68	17-Oct 19	26
				23-Oct 19	68	23-Oct 19	35
				29-Oct 19	130*	29-Oct 19	71*

NB: Sample period is a 24-hour period on each of the above dates | TSP = Total Suspended Particulates | PM10 = Particulate Matter <10 microns

NB: TSP and PM10 data for the 23 and 29 October 2019 run events were not available at the Steel River location due to power supply issues

*Elevated result – the Hunter Region experienced poor air quality on 29 October due to bushfires in northern NSW. The predominant wind on 29 October was from an E/NE direction

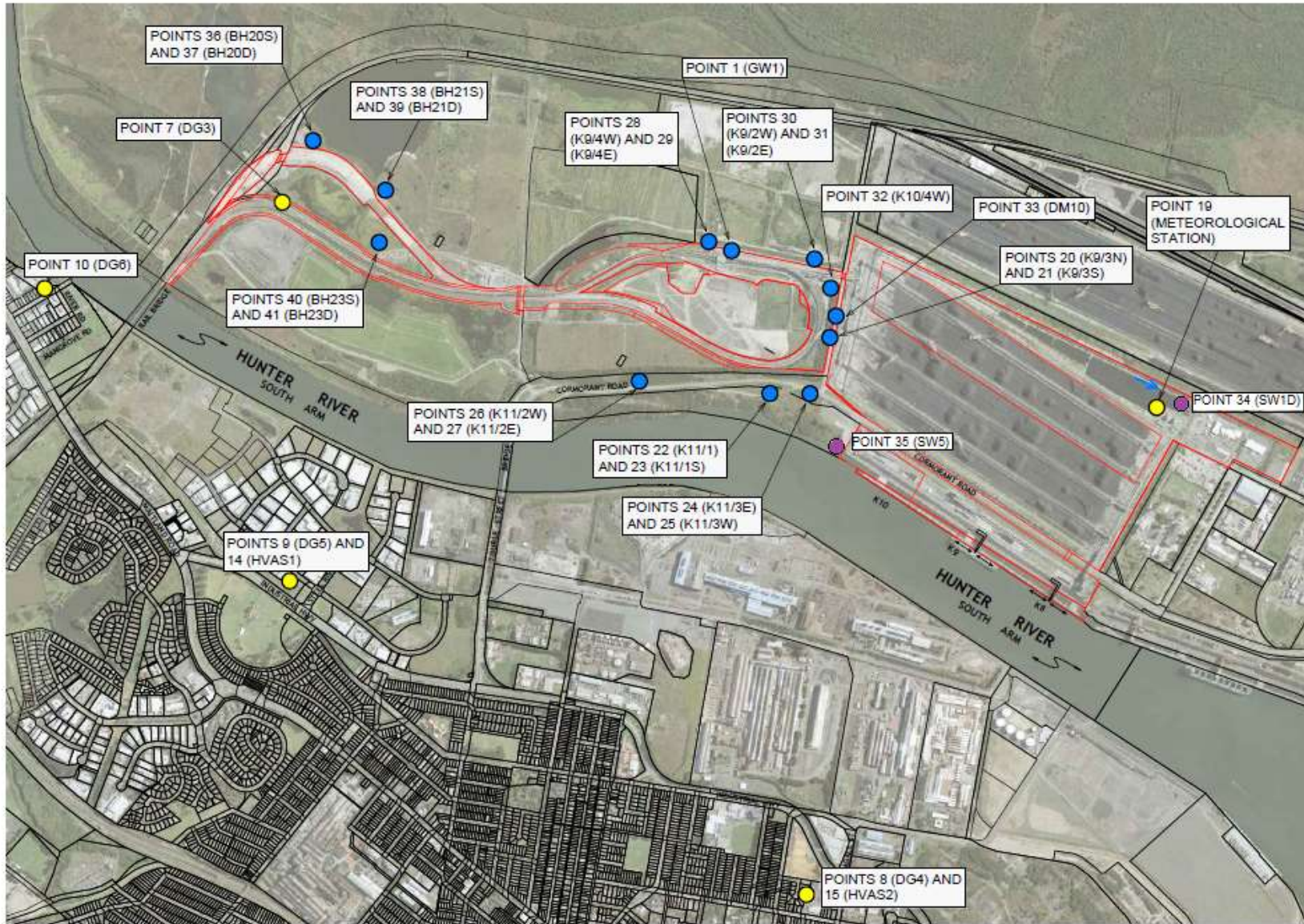


Figure 1: Groundwater, Surface Water and Additional Ambient Air Quality Monitoring Locations.