

# Monthly Monitoring Data

**Environmental Protection Licence Number:** 12693

**Link to EPL12693 on EPA Public Register:** [Click Here](#)

**Licensee:** Newcastle Coal Infrastructure Group Pty Ltd, Locked Bag 6003, Hunter Region Mail Centre NSW 2310

**Premises:** Newcastle Coal Infrastructure Group, Cormorant Road, Kooragang NSW 2304

**Date Published:** 1<sup>st</sup> November 2018

**Note:** On the 25<sup>th</sup> August 2017 an amendment was made to the NCIG Environmental Protection Licence (EPL12693) which removed the requirement for ambient air quality monitoring at Points 7-10 and 14-15. However, NCIG will continue to monitor and publish ambient air quality data for these locations previously listed in EPL12693 for the interest of the public.

## Depositional Dust Monitoring

**Sample Period:** 3<sup>rd</sup> September 2018 – 3<sup>rd</sup> October 2018

**Date Obtained:** 22<sup>nd</sup> October 2018

**Units of Measure:** grams per square metre per month (g/m<sup>2</sup>/month)

**Frequency:** Monthly

	Monitoring Point 7 - DG3 (Kooragang Island)	Monitoring Point 8 - DG4 (Mayfield Sport Rec Club)	Monitoring Point 9 - DG5 (Mayfield West)	Monitoring Point 10 - DG6 (Sandgate)
<b>Depositional Dust</b>	1.1	1.0	0.9	1.6

## High Volume Air Sampling

**Date Obtained:** 22<sup>nd</sup> October 2018

**Units of measure:** micrograms per cubic metre (µg/m<sup>3</sup>)

**Frequency:** Weekly

	Monitoring Point 14 - HVAS 1 (Steel River)			Monitoring Point 15 - HVAS 2 (Crebert Street)			
	TSP	PM10		TSP		PM10	
<b>5-Sep 18</b>	25	<b>5-Sep 18</b>	13	<b>4-Sep 18</b>	15	<b>4-Sep 18</b>	6
<b>11-Sep 18</b>	51	<b>11-Sep 18</b>	16	<b>10-Sep 18</b>	36	<b>10-Sep 18</b>	18
<b>17-Sep 18</b>	49	<b>17-Sep 18</b>	15	<b>16-Sep 18</b>	40	<b>16-Sep 18</b>	15
<b>23-Sep 18</b>	35	<b>23-Sep 18</b>	20	<b>22-Sep 18</b>	56	<b>22-Sep 18</b>	34
				<b>28-Sep 18</b>	44	<b>28-Sep 18</b>	22

NB. Sample period is a 24-hour period on each of the above dates | TSP = Total Suspended Particulates | PM10 = Particulate Matter <10 microns

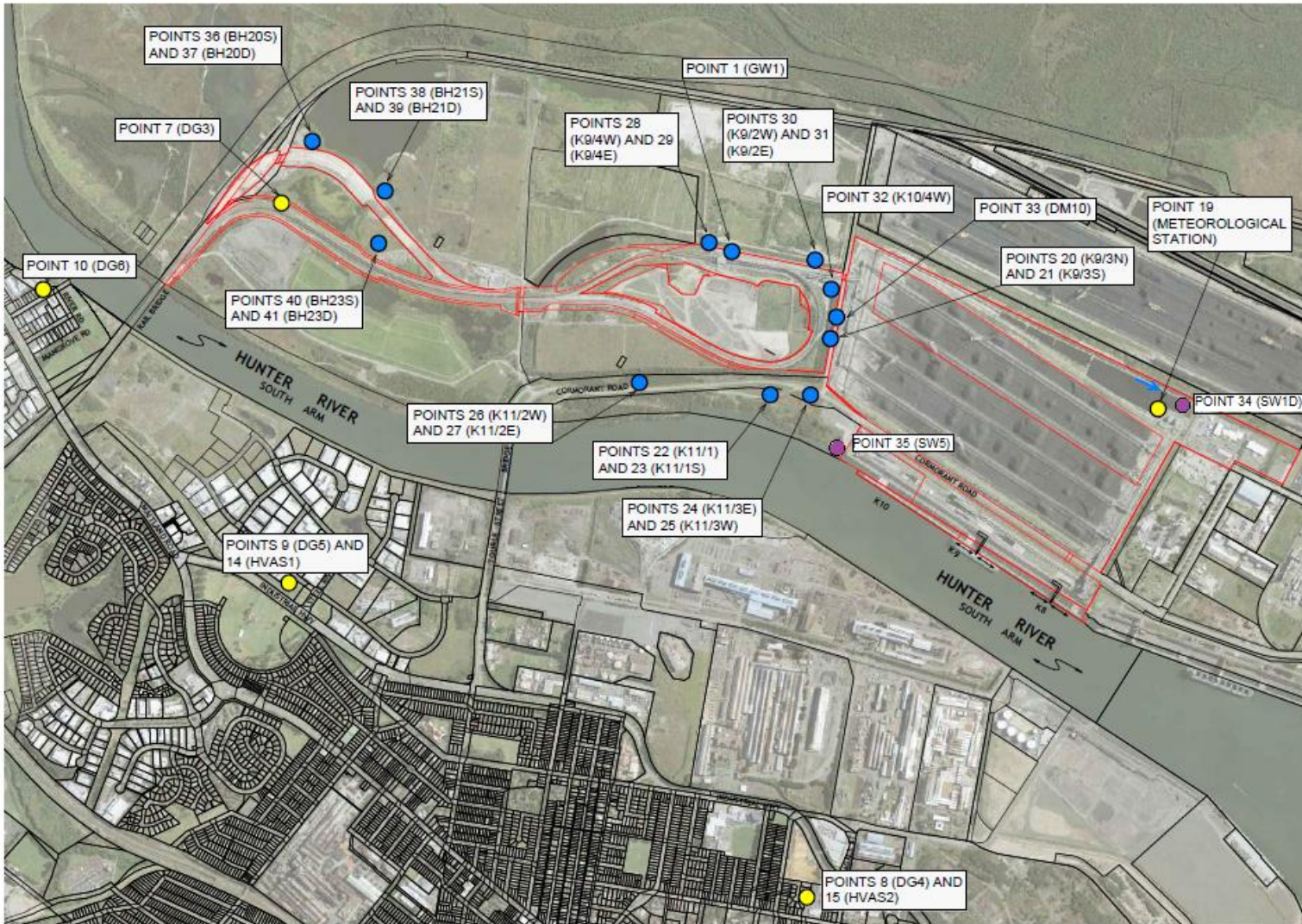


Figure 1: Groundwater, Surface Water and Additional Ambient Air Quality Monitoring Locations.