

NOTES
 1. STORAGE LENGTHS CALCULATED TO THE POINT WHERE TRACK CENTRES ARE AT 3.5m

LEGEND
 — TRACKS
 — 1500m LONG TRAIN SETS

Rev.	Date	Revision Details	Drn	Ver.	App.
A4	05/06/12	CLIENT AMENDMENTS	NS		
A3	28/04/12	NCIG DEPARTURE ROADS ALIGNMENT REVISED	NS		
A2	17/01/12	VERIFICATION COMPLETE	NS		
A1	06/09/11	PRELIMINARY ISSUE	NS		

aurecon HATCH
 Aurecon Hatch ABN 21 646 421 651 Telephone: +61 2 9465 5599
 116 Military Road (PO Box 538) Neutral Bay Facsimile: +61 2 9465 5598
 New South Wales 2088 Australia Email: NCIGStage2@aureconhatch.com

Client:

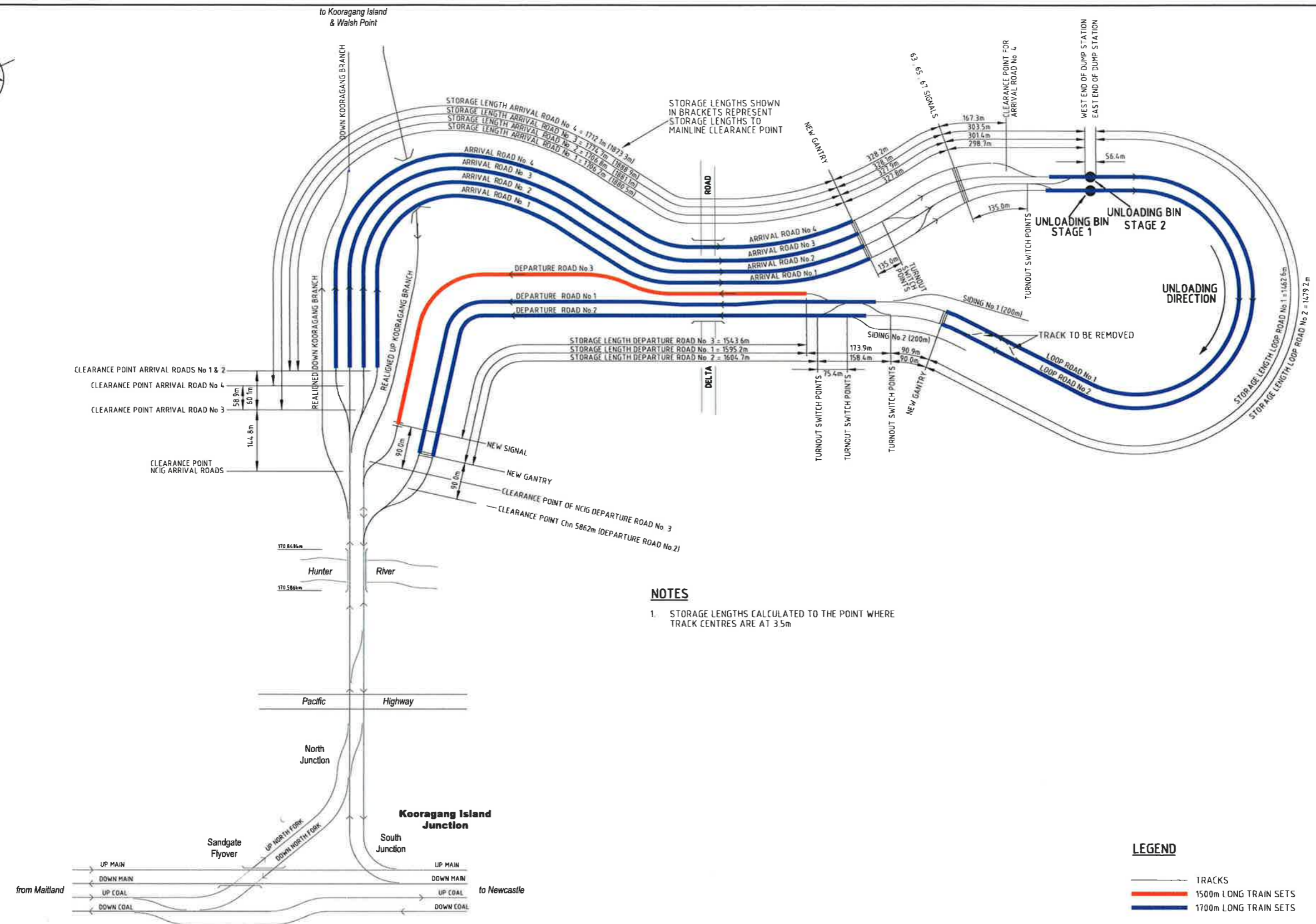
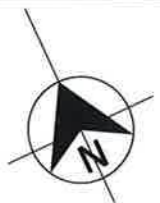
Newcastle Coal
 INFRASTRUCTURE GROUP

Drawn	Signed	Date
NS	Signed	Date
Designed	Signed	Date
NS	Signed	Date
Verified	Signed	Date
SM	Signed	Date
Approved	Signed	Date
DIB	Signed	Date

NCIG COAL EXPORT TERMINAL - STAGE 2F
RAIL AREA
TRAIN STORAGE SCHEMATIC PLAN
FOR 1500M LONG TRAIN

PRELIMINARY
NOT FOR CONSTRUCTION

Project No. H337400
 Scale: NTS Sheet Size: A1
 Drawing No. HW03-01-R-82014 Rev. A4



NOTES
 1. STORAGE LENGTHS CALCULATED TO THE POINT WHERE TRACK CENTRES ARE AT 3.5m

LEGEND
 — TRACKS
 — 1500m LONG TRAIN SETS
 — 1700m LONG TRAIN SETS

Rev.	Date	Revision Details	Drn	Ver.	App.
A4	05/06/12	CLIENT AMENDMENTS			NS
A3	28/04/12	NCIG DEPARTURE ROADS ALIGNMENT REVISED			NS
A2	17/01/12	VERIFICATION COMPLETE			NS
A1	06/09/11	PRELIMINARY ISSUE			NS

aurecon HATCH
 Aurecon Hatch ABN 21 646 421 651 Telephone: +61 2 9465 5599
 116 Military Road (PO Box 538) Neutral Bay Facsimile: +61 2 9465 5598
 New South Wales 2089 Australia Email: NCIGStage2F@aureconhatch.com

Client:

Newcastle Coal
 INFRASTRUCTURE GROUP

Drawn	Signed	Date
NS		
Designed	Signed	Date
NS		
Verified	Signed	Date
SM		
Approved	Signed	Date
DIB		

NCIG COAL EXPORT TERMINAL - STAGE 2F
RAIL AREA
TRAIN STORAGE SCHEMATIC PLAN
FOR 1700M LONG TRAIN

PRELIMINARY
NOT FOR CONSTRUCTION
 Project No. H337400
 Scale: NTS
 Drawing No. HW03-01-R-82015
 Sheet Size: A1
 Rev: A4

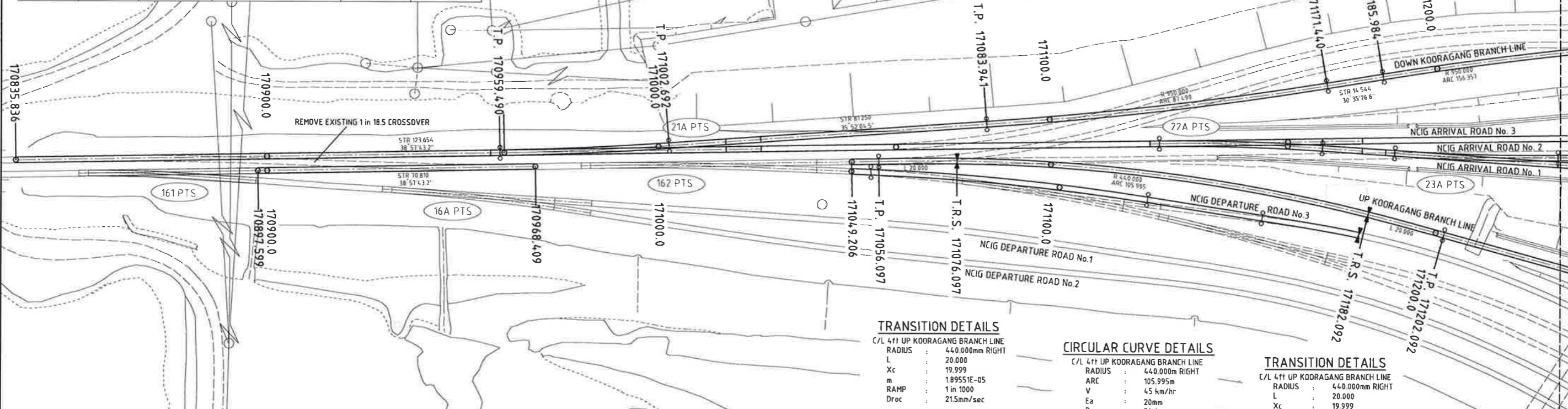


TURNOUT GEOMETRY								CROSSING DETAILS				
No.	Base Type	T/O Length	T/O Rate	T/O Angle	M/L Geometry	T/O Geometry	Description	Cat No.	Xing Rate	Min. Type	Rail/htg	Reference
21A PTS	800 - 18.5	47.083	1 in 18.5	3.094058°	STRAIGHT	R 800 000	STD. L.H.	T8005	1 in 18.5	SNC	60kg	PRE01-GA-0305 Rev. 1

SCHEDULE OF CO-ORDINATED HORIZONTAL ALIGNMENT POINTS DOWN KOORAGANG BRANCH LINE					
CURVE	POINT	Km	CENTRELINE	CO-ORDINATES	
				EAST	NORTH
800.000 L	START	170 835.836	CL 4ft-DOWN KOORAGANG BRANCH	367 126.180	1 361 292.929
	TP	170 959.490	CL 4ft-DOWN KOORAGANG BRANCH	367 203.934	1 361 389.078
	CENTRE		CL 4ft-DOWN KOORAGANG BRANCH	366 581.884	1 361 892.122
950.000 L	TP	171 002.692	CL 4ft-DOWN KOORAGANG BRANCH	367 230.180	1 361 423.387
	TP	171 083.941	CL 4ft-DOWN KOORAGANG BRANCH	367 277.785	1 361 489.229
	CENTRE		CL 4ft-DOWN KOORAGANG BRANCH	366 507.934	1 362 045.852
	TP	171 171.440	CL 4ft-DOWN KOORAGANG BRANCH	367 325.717	1 361 562.395
	TP	171 185.984	CL 4ft-DOWN KOORAGANG BRANCH	367 333.119	1 361 574.915

CIRCULAR CURVE DETAILS					
C/L 4ft DOWN KOORAGANG BRANCH LINE					
RADIUS	:	950.000m	LEFT		
ARC	:	87.499m			
V	:	45 km/hr			
Ea	:	0mm			
D	:	25.2mm			

CIRCULAR CURVE DETAILS					
C/L 4ft DOWN KOORAGANG BRANCH LINE					
RADIUS	:	950.000m	RIGHT		
ARC	:	156.357m			
V	:	45 km/hr			
Ea	:	0mm			
D	:	25.2mm			



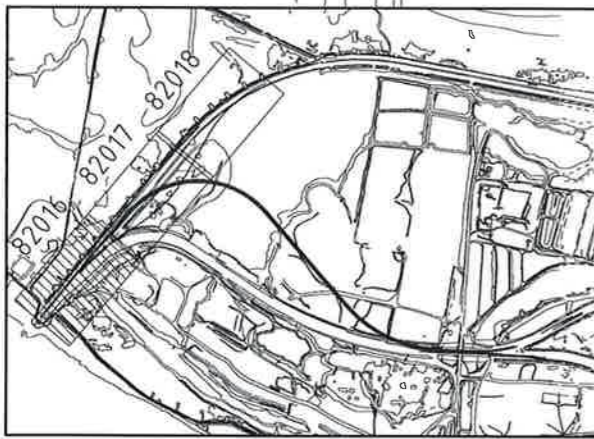
TRANSITION DETAILS					
C/L 4ft UP KOORAGANG BRANCH LINE					
RADIUS	:	440.000m	RIGHT		
L	:	20.000			
Xc	:	19.999			
m	:	1.89551E-05			
RAMP	:	1 in 1000			
Drac	:	215mm/sec			

CIRCULAR CURVE DETAILS					
C/L 4ft UP KOORAGANG BRANCH LINE					
RADIUS	:	440.000m	RIGHT		
ARC	:	105.995m			
V	:	45 km/hr			
Ea	:	20mm			
D	:	34.4mm			

TRANSITION DETAILS					
C/L 4ft UP KOORAGANG BRANCH LINE					
RADIUS	:	440.000m	RIGHT		
L	:	20.000			
Xc	:	19.999			
m	:	1.89551E-05			
RAMP	:	1 in 1000			
Drac	:	215mm/sec			

SCHEDULE OF CO-ORDINATED HORIZONTAL ALIGNMENT POINTS UP KOORAGANG BRANCH LINE					
CURVE	POINT	Km	CENTRELINE	CO-ORDINATES	
				EAST	NORTH
440.000 R	START	170 897.599	CL 4ft-UP KOORAGANG BRANCH	367 167.863	1 361 338.652
	TP	170 968.409	CL 4ft-UP KOORAGANG BRANCH	367 212.388	1 361 393.711
	TP	171 049.206	CL 4ft-UP KOORAGANG BRANCH	367 263.194	1 361 456.535
	TRS	171 056.097	CL 4ft-UP KOORAGANG BRANCH	367 267.527	1 361 461.894
	CENTRE		CL 4ft-UP KOORAGANG BRANCH	367 280.220	1 361 477.349
	TRS	171 182.092	CL 4ft-UP KOORAGANG BRANCH	367 615.968	1 361 192.967
	TP	171 202.092	CL 4ft-UP KOORAGANG BRANCH	367 357.762	1 361 549.238
	TP	171 202.092	CL 4ft-UP KOORAGANG BRANCH	367 374.132	1 361 560.728

NOTES
1. FOR GENERAL RAIL NOTES REFER TO DRG HW03-01-R-82004



KEY PLAN NTS

LEGEND	
	EXISTING TRACK
	EXISTING TRACK TO BE REMOVED
	PROPOSED STAGE 2 TRACK
	DERAILER
	DERAILER NUMBERS
	POINT NUMBERS
	LUBRICATOR

SCALE 1:500

Rev	Date	Revision Details	Drn	Ver	App
A4	17/01/12	VERIFICATION COMPLETE			NS
A3	17/11/11	DRAFTING REVIEW COMMENTS INCORPORATED			NS
A2	06/10/11	CONNECTION TO MAIN LINE FINALISED			NS
A1	06/09/11	PRELIMINARY ISSUE			NS

aurecon HATCH
Aurecon Hatch ABN 21 648 421 651 Telephone: +61 2 9465 5599
116 Military Road (PO Box 538) Neutral Bay Facsimile: +61 2 9465 5598
New South Wales 2089 Australia Email: NCIGStage2F@aureconhatch.com

Client: **Newcastle Coal**
INFRASTRUCTURE GROUP

Drawn	Signed	Date
NS		
Designed	Signed	Date
NS		
Verified	Signed	Date
SM		
Approved	Signed	Date
DIB		

NCIG COAL EXPORT TERMINAL - STAGE 2F
RAIL AREA
KOORAGANG BRANCH LINES
SETOUT PLAN - SHEET 1 OF 3

PRELIMINARY NOT FOR CONSTRUCTION	
Project No.	H337400
Scale	1:500
Sheet Size	A1
Drawing No.	HW03-01-R-82016
Rev.	A4

ADJOINS DRAWING HW03-01-R-82018



CIRCULAR CURVE DETAILS

C/L 4ft DOWN KOORAGANG BRANCH LINE
 RADIUS : 950.000m RIGHT
 ARC : 66.921m
 V : 45 km/hr
 Ea : 0mm
 D : 25.2mm

SCHEDULE OF CO-ORDINATED HORIZONTAL ALIGNMENT POINTS DOWN KOORAGANG BRANCH LINE					
CURVE	POINT	Km	CENTRELINE	CO-ORDINATES	
				EAST	NORTH
950.000 R	CENTRE		CL 4ft-DOWN KOORAGANG BRANCH	368 150.902	1 361 091.458
	CTP (LIMIT OF CONSTRUCTION)	171 343.234	CL 4ft-DOWN KOORAGANG BRANCH	367 423.956	1 361 703.054
	TP	171 409.262	CL 4ft-DOWN KOORAGANG BRANCH	367 468.185	1 361 752.061

CIRCULAR CURVE DETAILS

C/L 4ft DOWN KOORAGANG BRANCH LINE
 RADIUS : 950.000m RIGHT
 ARC : 156.357m
 V : 45 km/hr
 Ea : 0mm
 D : 25.2mm

SCHEDULE OF CO-ORDINATED HORIZONTAL ALIGNMENT POINTS UP KOORAGANG BRANCH LINE					
CURVE	POINT	Km	CENTRELINE	CO-ORDINATES	
				EAST	NORTH
440.000 L	TP	171 301.321	CL 4ft-UP KOORAGANG BRANCH	367 455.781	1 361 617.117
	TRS	171 341.321	CL 4ft-UP KOORAGANG BRANCH	367 488.343	1 361 640.343
	CENTRE		CL 4ft-UP KOORAGANG BRANCH	367 222.076	1 361 990.631
	TRS	171 539.662	CL 4ft-UP KOORAGANG BRANCH	367 614.353	1 361 791.336
	TP	171 579.662	CL 4ft-UP KOORAGANG BRANCH	367 631.378	1 361 873.429

NOTES
 1. FOR GENERAL RAIL NOTES REFER TO DRG HW03-01-R-82004

LEGEND

- EXISTING TRACK
- EXISTING TRACK TO BE REMOVED
- PROPOSED STAGE 2 TRACK
- DERAILER
- DERAILER NUMBERS
- POINT NUMBERS
- LUBRICATOR

TRANSITION DETAILS

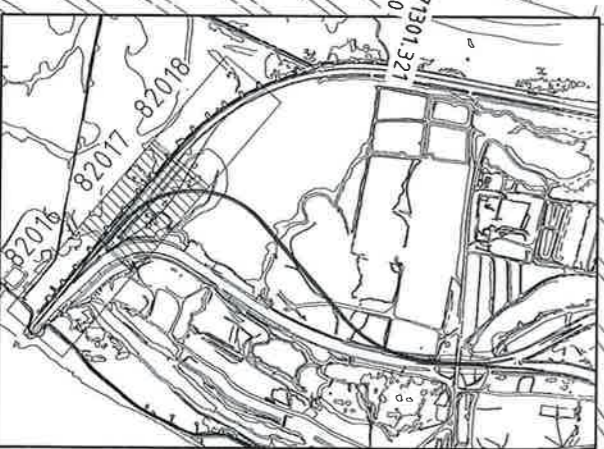
C/L 4ft UP KOORAGANG BRANCH LINE
 RADIUS : 440.000m LEFT
 L : 40.000
 Xc : 39.992
 m : 9.50116E-06
 RAMP : 1 in 1000
 Droc : 10.2mm/sec

CIRCULAR CURVE DETAILS

C/L 4ft UP KOORAGANG BRANCH LINE
 RADIUS : 440.000m LEFT
 ARC : 198.341m
 V : 45 km/hr
 Ea : 30mm
 D : 24.4mm

TRANSITION DETAILS

C/L 4ft UP KOORAGANG BRANCH LINE
 RADIUS : 440.000m LEFT
 L : 40.000
 Xc : 39.992
 m : 9.50116E-06
 RAMP : 1 in 1000
 Droc : 10.2mm/sec



KEY PLAN
NTS

Rev.	Date	Revision Details	Drn	Ver.	App.
A6	06/06/12	CLIENT AMENDMENTS		NS	
A5	26/04/12	UP KOORAGANG BRANCH LINE ALIGNMENT REVISED		NS	
A4	17/01/12	VERIFICATION COMPLETE		NS	
A3	17/11/11	DRAFTING REVIEW COMMENTS INCORPORATED		NS	
A2	06/10/11	CONNECTION TO MAIN LINE FINALISED		NS	
A1	06/09/11	PRELIMINARY ISSUE		NS	

aurecon HATCH

Aurecon Hatch ABN 21 646 421 601 Telephone: +61 2 9465 6599
 116 Military Road (PO Box 538) Neutral Bay Facsimile: +61 2 9465 6508
 New South Wales 2089 Australia Email: NCIGStage2F@aureconhatch.com

Client:

Newcastle Coal
INFRASTRUCTURE GROUP

Drawn	Signed	Date
NS		
Designed	Signed	Date
NS		
Verified	Signed	Date
SM		
Approved	Signed	Date
DIB		

NCIG COAL EXPORT TERMINAL - STAGE 2F
RAIL AREA
KOORAGANG BRANCH LINES
SETOUT PLAN - SHEET 2 OF 3

PRELIMINARY
NOT FOR CONSTRUCTION

Project No. **H337400**

Scale **1:500** Sheet Size **A1**

Drawing No. **HW03-01-R-82017** Rev. **A6**



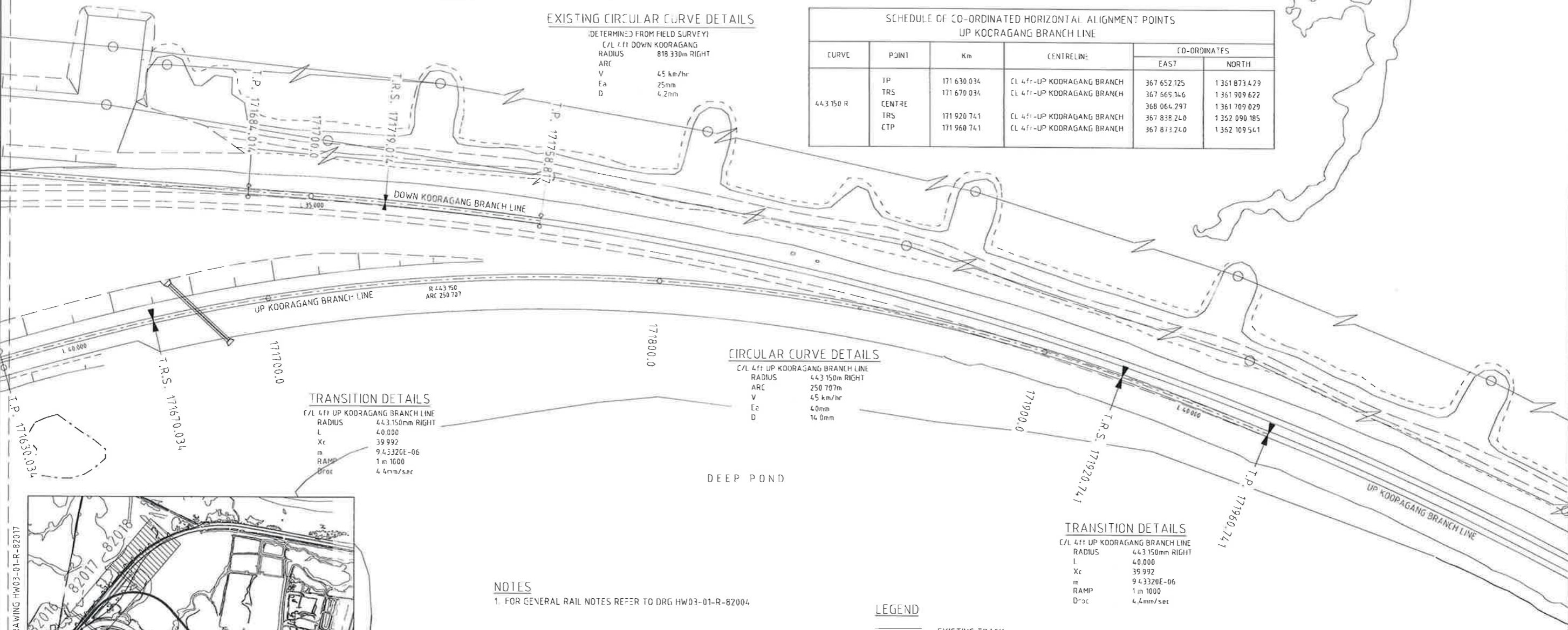
(CONSTRUCTED AS PART OF KOORAGANG DOWN BRANCH LINE TEMPORARY DEVIATION)

SCHEDULE OF CO-ORDINATED HORIZONTAL ALIGNMENT POINTS DOWN KOORAGANG BRANCH LINE					
CURVE	POINT	Km	CENTRELINE	CO-ORDINATES	
				EAST	NORTH
818 330 R	IP	171 684.014	CL 4.11-DOWN KOORAGANG BRANCH	367 659 24.0	1 361 949 512
	IRS	171 719 014	CL 4.11-DOWN KOORAGANG BRANCH	367 683 756	1 361 974 490
	CENTRE			368 259 54.0	1 361 392 995

TRANSITION DETAILS
 C/L 4.11 UP KOORAGANG BRANCH LINE
 RADIUS 818 330m RIGHT
 L 35 000
 Xc 34 998
 m 5.82341E-06
 RAMP 1 in 1000
 Grad 15mm/sec

EXISTING CIRCULAR CURVE DETAILS
 (DETERMINED FROM FIELD SURVEY)
 C/L 4.11 DOWN KOORAGANG
 RADIUS 818 330m RIGHT
 ARC
 V 45 km/hr
 Ea 25mm
 D 4.2mm

SCHEDULE OF CO-ORDINATED HORIZONTAL ALIGNMENT POINTS UP KOORAGANG BRANCH LINE					
CURVE	POINT	Km	CENTRELINE	CO-ORDINATES	
				EAST	NORTH
443 150 R	TP	171 630 034	CL 4.11-UP KOORAGANG BRANCH	367 652 125	1 361 873 429
	TRS	171 670 034	CL 4.11-UP KOORAGANG BRANCH	367 669 346	1 361 909 622
	CENTRE			368 064 297	1 361 709 029
	TRS	171 920 741	CL 4.11-UP KOORAGANG BRANCH	367 838 24.0	1 352 090 185
	CTP	171 960 741	CL 4.11-UP KOORAGANG BRANCH	367 873 24.0	1 352 109 541



TRANSITION DETAILS
 C/L 4.11 UP KOORAGANG BRANCH LINE
 RADIUS 443 150m RIGHT
 L 40 000
 Xc 39 992
 m 9.43320E-06
 RAMP 1 in 1000
 Grad 4.4mm/sec

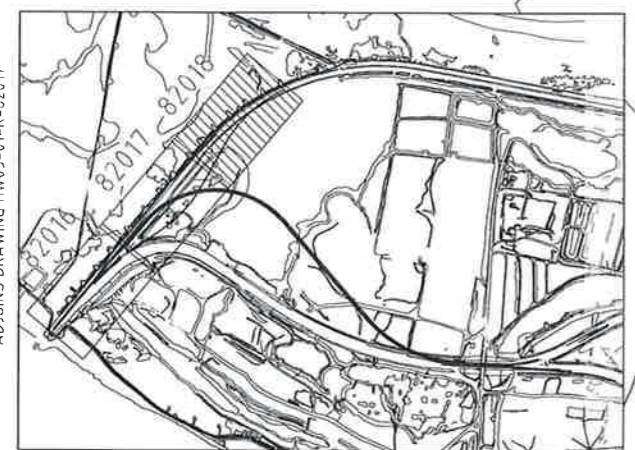
CIRCULAR CURVE DETAILS
 C/L 4.11 UP KOORAGANG BRANCH LINE
 RADIUS 443 150m RIGHT
 ARC
 V 45 km/hr
 Ea 40mm
 D 14.0mm

TRANSITION DETAILS
 C/L 4.11 UP KOORAGANG BRANCH LINE
 RADIUS 443 150m RIGHT
 L 40 000
 Xc 39 992
 m 9.43320E-06
 RAMP 1 in 1000
 Grad 4.4mm/sec

EXISTING CIRCULAR CURVE DETAILS
 (DETERMINED FROM FIELD SURVEY)
 C/L 4.11 UP KOORAGANG
 RADIUS 800 000m RIGHT
 ARC
 V 45 km/hr
 Ea 0mm
 D 29.9mm

NOTES
 1. FOR GENERAL RAIL NOTES REFER TO DRG HW03-01-R-82004

- LEGEND**
- EXISTING TRACK
 - EXISTING TRACK TO BE REMOVED
 - PROPOSED STAGE 2 TRACK
 - DERAILER
 - DERAILER NUMBERS
 - POINT NUMBERS
 - LUBRICATOR



KEY PLAN
NTS

Rev	Date	Revision Details	Drn	Ver	App
A6	23/05/12	CLIENT AMENDMENTS	AR		
A5	26/04/12	UP KOORAGANG BRANCH LINE ALIGNMENT REVISED	NS		
A4	17/01/12	VERIFICATION COMPLETE	NS		
A3	17/11/11	DRAFTING REVIEW COMMENTS INCORPORATED	NS		
A2	06/10/11	CONNECTION TO MAIN LINE FINALISED	NS		
A1	06/09/11	PRELIMINARY ISSUE	NS		

aurecon HATCH
 Aurecon Hatch ABN 21 646 421 651 Telephone: +61 2 9465 5599
 116 Military Road (PO Box 538) Neutral Bay Facsimile: +61 2 9465 5598
 New South Wales 2089 Australia Email: NCIGStage2F@aureconhatch.com

Newcastle Coal
 INFRASTRUCTURE GROUP

Drawn	Signed	Date
NS		
Designed	Signed	Date
NS		
Verified	Signed	Date
SM		
Approved	Signed	Date
DIB		

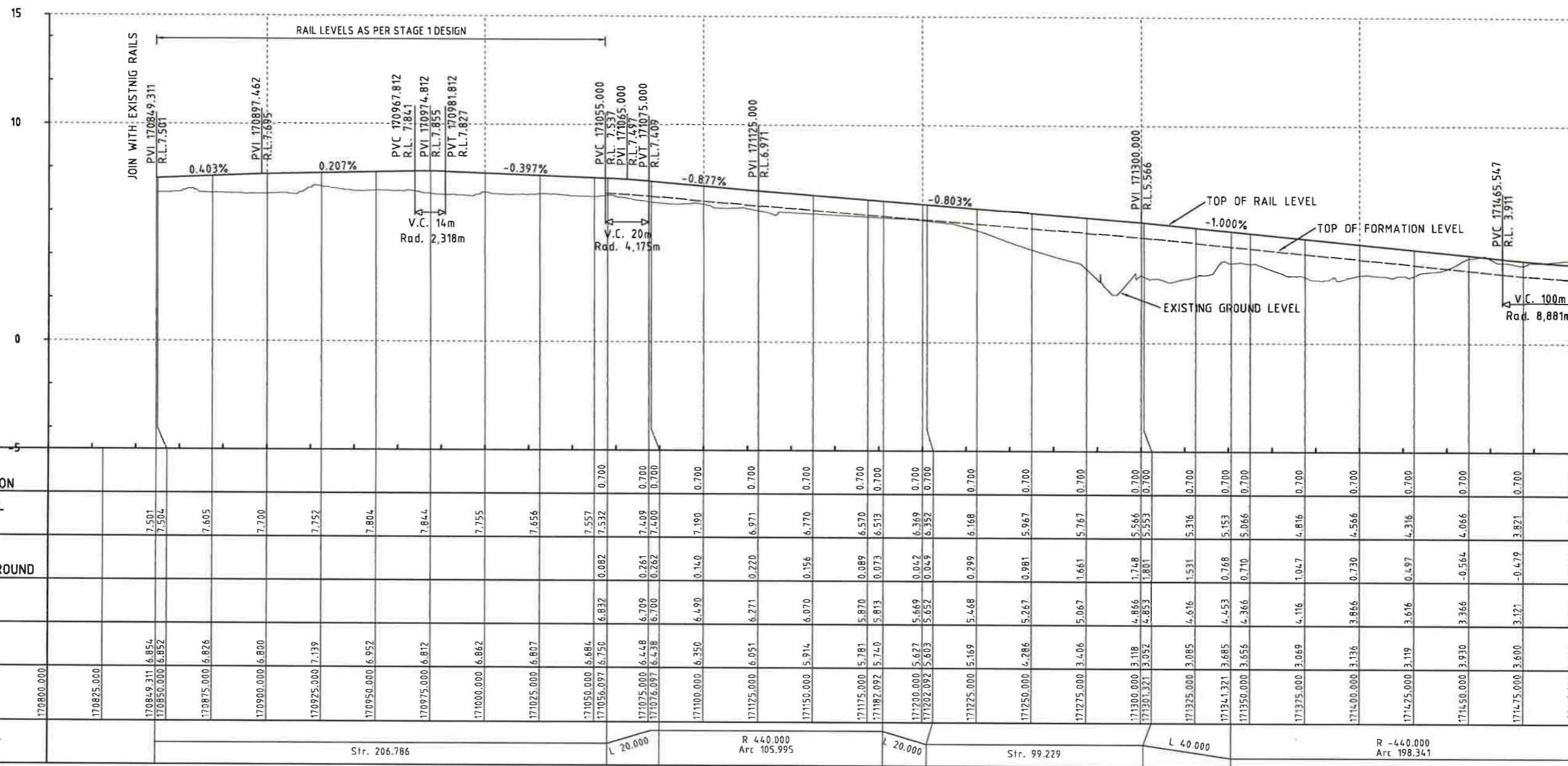
NCIG COAL EXPORT TERMINAL - STAGE 2F
 RAIL AREA
 KOORAGANG BRANCH LINES
 SE TOUT PLAN - SHEET 3 OF 3

PRELIMINARY
 NOT FOR CONSTRUCTION

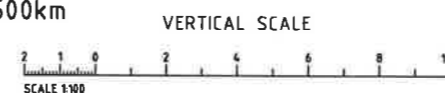
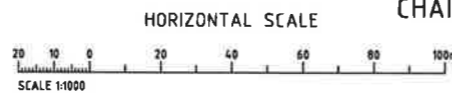
Project No. **H337400**

Scale 1500 Sheet Size **A1**

Drawing No. **HW03-01-R-82018** Rev. **A6**



LONGITUDINAL SECTION
UP KOORAGANG BRANCH LINE
CHAINAGE 170.800km TO 171.500km



NOTES

1. ALL TRACK WORK TO BE BUILT TO CLASS 1XC TO ARTC STANDARD TSD11.
2. ALL PROPOSED TRACKWORK DESIGNED TO ARTC STANDARD TDS10.
3. EXISTING SURVEY SOURCED FROM AVAILABLE PHOTOGRAMATRY DATA. SETOUT & GRADING TO BE CONFIRMED ON SITE AGAINST VERIFIED SURVEY.
4. ALL DIMENSIONS ARE IN METRES UNLESS SHOWN OTHERWISE.
5. ALL LEVELS ARE TO THE AUSTRALIAN HEIGHT DATUM (AHD).
6. ALL LEVELS ARE MEASURED IN METRES UNLESS SHOWN OTHERWISE.

Rev.	Date	Revision Details	Drn	Ver.	App.
A5	26/04/12	UP KOORAGANG BRANCH LINE ALIGNMENT REVISED	NS		
A4	17/01/12	VERIFICATION COMPLETE	NS		
A3	10/10/11	TOP OF RAIL LEVELS REVISED	NS		
A2	06/10/11	NOTE ADDED	NS		
A1	06/09/11	PRELIMINARY ISSUE	NS		

aurecon HATCH
Aurecon Hatch ABN 21 646 421 651 Telephone: +61 2 9465 5599
116 Military Road (PO Box 538) Neutral Bay Facsimile: +61 2 9465 5598
New South Wales 2089 Australia Email: NCIGStage2F@aureconhatch.com

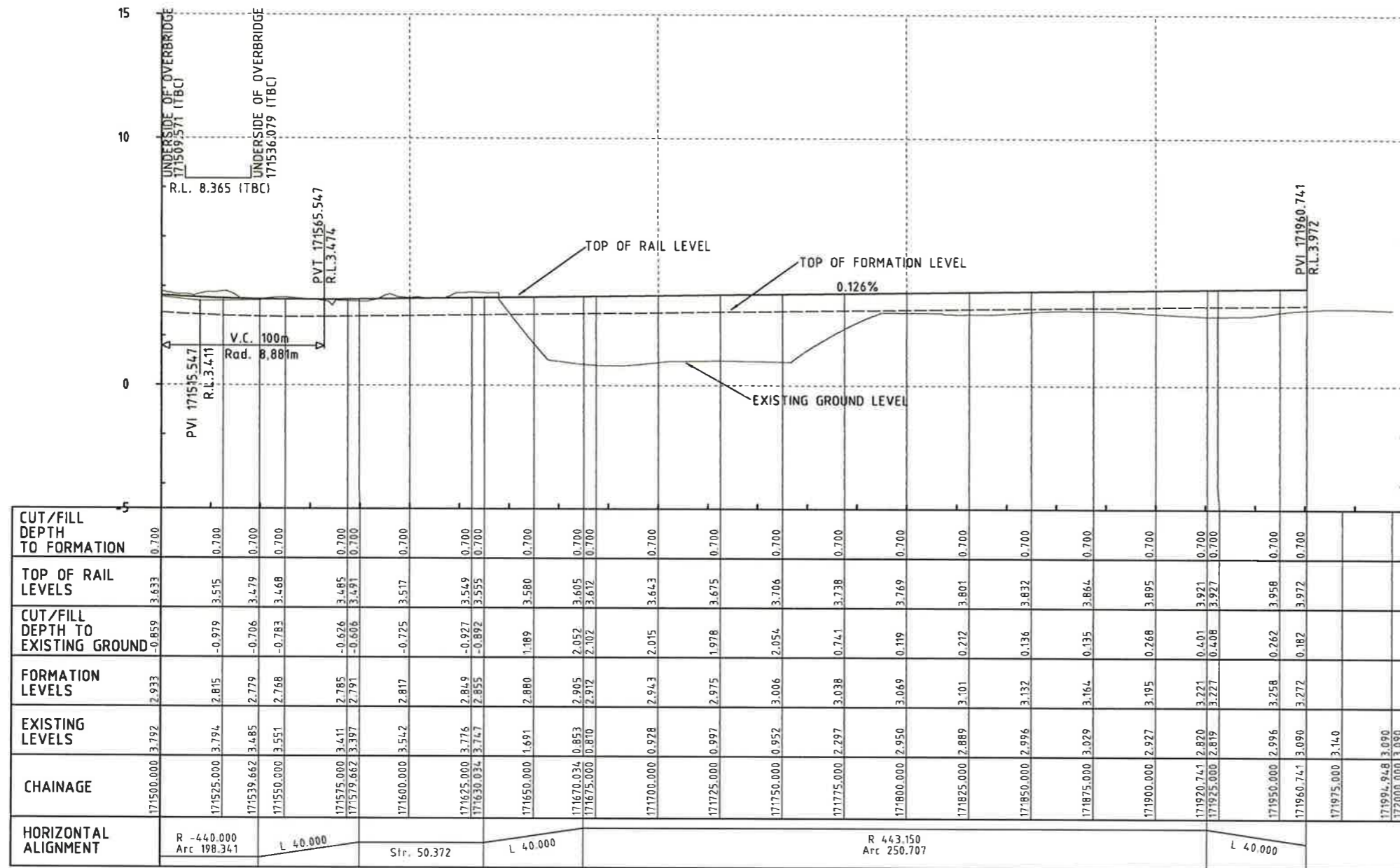
Client:
Newcastle Coal
INFRASTRUCTURE GROUP

Drawn	Signed	Date
NS		
Designed	Signed	Date
NS		
Verified	Signed	Date
SM		
Approved	Signed	Date
DIB		

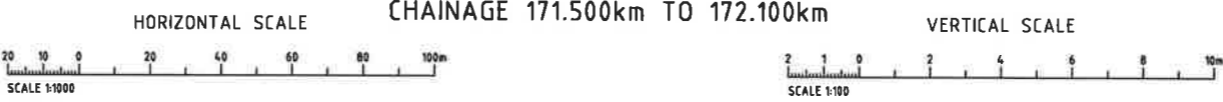
NCIG COAL EXPORT TERMINAL - STAGE 2F
RAIL AREA
UP KOORAGANG BRANCH LINE
LONGITUDINAL SECTION SHEET 1 OF 2

PRELIMINARY
NOT FOR CONSTRUCTION

Project No. H337400
Scale: 1:100
Drawing No. HW03-01-R-82019
Sheet Size A1
Rev. A5



LONGITUDINAL SECTION
 UP KOORAGANG BRANCH LINE
 CHAINAGE 171.500km TO 172.100km



NOTES

1. ALL TRACK WORK TO BE BUILT TO CLASS 1XC TO ARTC STANDARD TSD11.
2. ALL PROPOSED TRACKWORK DESIGNED TO ARTC STANDARD TDS10.
3. EXISTING SURVEY SOURCED FROM AVAILABLE PHOTOGRAMATRY DATA. SETOUT & GRADING TO BE CONFIRMED ON SITE AGAINST VERIFIED SURVEY.
4. ALL DIMENSIONS ARE IN METRES UNLESS SHOWN OTHERWISE.
5. ALL LEVELS ARE TO THE AUSTRALIAN HEIGHT DATUM (AHD).
6. ALL LEVELS ARE MEASURED IN METRES UNLESS SHOWN OTHERWISE.

Rev.	Date	Revision Details	Drn	Ver.	App.
A5	26/04/12	UP KOORAGANG BRANCH LINE ALIGNMENT REVISED	NS		
A4	17/01/12	VERIFICATION COMPLETE	NS		
A3	10/10/11	FORMATION LEVELS REVISED	NS		
A2	06/10/11	CONNECTION TO MAINLINE FINALISED	NS		
A1	06/09/11	PRELIMINARY ISSUE	NS		



Drawn	Signed	Date
NS		
Designed	Signed	Date
NS		
Verified	Signed	Date
SM		
Approved	Signed	Date
DIB		

NCIG COAL EXPORT TERMINAL - STAGE 2F
 RAIL AREA
 UP KOORAGANG BRANCH LINE
 LONGITUDINAL SECTION SHEET 2 OF 2

PRELIMINARY
 NOT FOR CONSTRUCTION

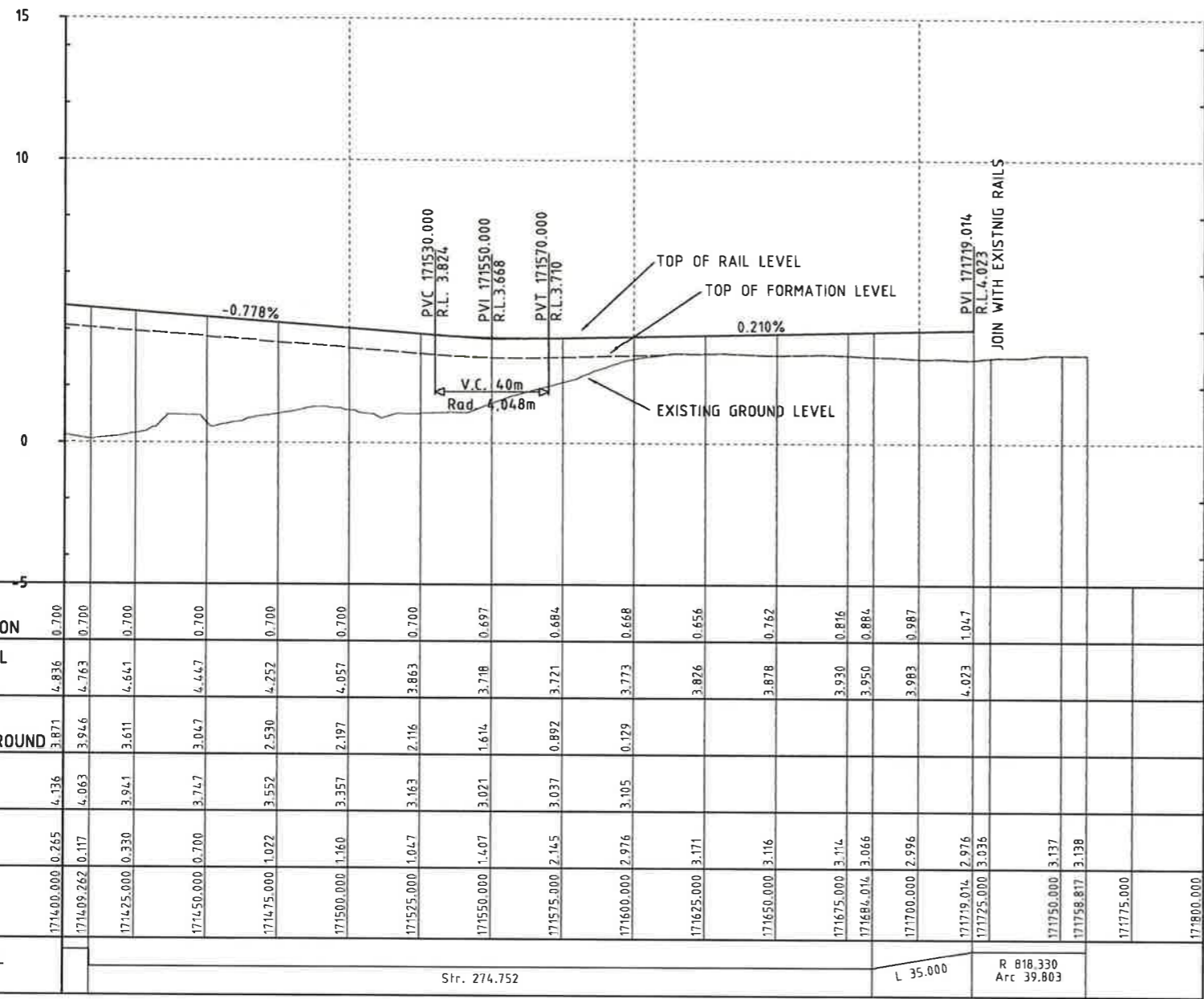
Project No. H337400

Scale 1:100
 1:1000

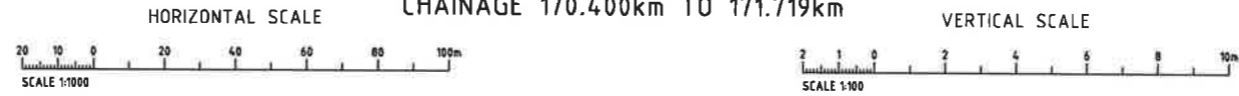
Sheet Size A1

Drawing No. HW03-01-R-82020

Rev. A5



LONGITUDINAL SECTION
DOWN KOORAGANG BRANCH LINE
CHAINAGE 170.400km TO 171.719km



- NOTES**
- ALL TRACK WORK TO BE BUILT TO CLASS 1XC TO ARTC STANDARD TSD11.
 - ALL PROPOSED TRACKWORK DESIGNED TO ARTC STANDARD TDS10.
 - EXISTING SURVEY SOURCED FROM AVAILABLE PHOTOGRAMATRY DATA. SETOUT & GRADING TO BE CONFIRMED ON SITE AGAINST VERIFIED SURVEY.
 - ALL DIMENSIONS ARE IN METRES UNLESS SHOWN OTHERWISE.
 - ALL LEVELS ARE TO THE AUSTRALIAN HEIGHT DATUM (AHD).
 - ALL LEVELS ARE MEASURED IN METRES UNLESS SHOWN OTHERWISE.

Rev.	Date	Revision Details	Drn	Ver.	App.
A5	17/01/12	VERIFICATION COMPLETE			
A4	17/11/11	DRAFTING REVIEW COMMENTS INCORPORATED			
A3	10/10/11	FORMATION LEVELS REVISED			
A2	06/10/11	CONNECTION TO MAINLINE FINALISED			
A1	06/09/11	PRELIMINARY ISSUE			

aurecon HATCH

Aurecon Hatch ABN 21 646 421 651 Telephone: +61 2 9465 5599
 116 Military Road (PO Box 538) Neutral Bay Facsimile: +61 2 9465 5568
 New South Wales 2089 Australia Email: NCIGStage2F@aureconhatch.com

Client:

Newcastle Coal
INFRASTRUCTURE GROUP

Drawn	Signed	Date
NS		
Designed	Signed	Date
NS		
Verified	Signed	Date
SM		
Approved	Signed	Date
DIB		

NCIG COAL EXPORT TERMINAL - STAGE 2F
RAIL AREA
DOWN KOORAGANG BRANCH LINE
LONGITUDINAL SECTION SHEET 2 OF 2

PRELIMINARY
NOT FOR CONSTRUCTION

Project No: H337400

Scale: 1:100
1:1000

Drawing No: HW03-01-R-82022

Sheet Size: A1
Rev: A5

TURNOUT DETAILS												
TURNOUT GEOMETRY					CROSSING DETAILS							
No.	Base Type	T/D Length	T/D Rate	T/D Angle	M/L Geometry	T/D Geometry	Description	Cat No.	Xing Rate	Min. Type	Rail/ktg	Reference
22A PTS	500 : 12	37.391	1 in 12	4.763642°	STRAIGHT	R 500.000	STD. R.H.	T500CR	1 in 12	RBM	60kg	PRE01-GA-0040 Rev. 6
23A PTS	500 : 12	37.391	1 in 12	4.763642°	STRAIGHT	R 500.000	STD. L.H.	T500CL	1 in 12	RBM	60kg	PRE01-GA-0040 Rev. 6

SCHEDULE OF CO-ORDINATED HORIZONTAL ALIGNMENT POINTS NCIG ARRIVAL ROAD No. 1					
CURVE	POINT	Km	CENTRELINE	CO-ORDINATES	
				EAST	NORTH
	T.P.	227.401	CL 411-NCIG ARRIVAL ROAD No. 1	367 350.085	1 361 564.599

SCHEDULE OF CO-ORDINATED HORIZONTAL ALIGNMENT POINTS NCIG ARRIVAL ROAD No. 3					
CURVE	POINT	Km	CENTRELINE	CO-ORDINATES	
				EAST	NORTH
	START	000.000	CL 411-NCIG ARRIVAL ROAD No. 3	367 204.620	1 361 389.925

SCHEDULE OF CO-ORDINATED HORIZONTAL ALIGNMENT POINTS NCIG ARRIVAL ROAD No. 2					
CURVE	POINT	Km	CENTRELINE	CO-ORDINATES	
				EAST	NORTH
500.000 R	T.P. CENTRE	167.216	CL 411-NCIG ARRIVAL ROAD No. 2	367 309.766	1 361 519.947
	T.P.	208.786	CL 411-NCIG ARRIVAL ROAD No. 2	367 698.548	1 361 205.544
	T.P.	227.401	CL 411-NCIG ARRIVAL ROAD No. 2	367 337.218	1 361 551.147
500.000 L	T.P. CENTRE	227.401	CL 411-NCIG ARRIVAL ROAD No. 2	367 350.085	1 361 564.599
	T.P.	227.401	CL 411-NCIG ARRIVAL ROAD No. 2	366 988.756	1 361 910.201

SCHEDULE OF CO-ORDINATED HORIZONTAL ALIGNMENT POINTS NCIG DEPARTURE ROAD No. 3					
CURVE	POINT	Km	CENTRELINE	CO-ORDINATES	
				EAST	NORTH
	T.R.S.	5 924.441	CL 411-NCIG DEPARTURE ROAD No. 3	367 360.264	1 361 543.995
	T.P.	5 949.441	CL 411-NCIG DEPARTURE ROAD No. 3	367 341.169	1 361 527.862
	T.P.	5 979.048	CL 411-NCIG DEPARTURE ROAD No. 3	367 318.882	1 361 508.373
	CENTRE		CL 411-NCIG DEPARTURE ROAD No. 3	367 713.845	1 361 056.706
	T.P.	6 050.002	CL 411-NCIG DEPARTURE ROAD No. 3	367 268.352	1 361 458.620
	END	6 054.981	CL 411-NCIG DEPARTURE ROAD No. 3	367 265.017	1 361 454.924

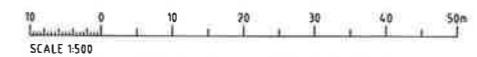
CIRCULAR CURVE DETAILS
 C/L 411 NCIG DEPARTURE LINE No. 3
 RADIUS : 600.000m LEFT
 ARC : 70.954m
 V : 45 km/hr
 Ea : 0mm
 D : 39.9mm

TRANSITION DETAILS
 C/L 411 NCIG DEPARTURE LINE No. 3
 RADIUS : 245.500m LEFT
 L : 25.000
 Xc : 24.993
 m : 2.7262E-05
 RAMP : 1 in 500
 Droc : 23.8mm/sec

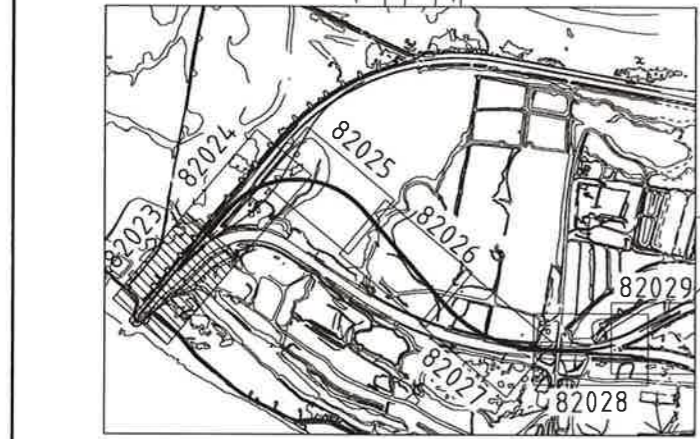
CIRCULAR CURVE DETAILS
 C/L 411 NCIG DEPARTURE LINE No. 3
 RADIUS : 245.500m LEFT
 ARC : 294.508m
 V : 45 km/hr
 Ea : 50mm
 D : 47.5mm

NOTES
 1. FOR GENERAL RAIL NOTES REFER TO DRG HW03-01-R-82004

- LEGEND**
- EXISTING TRACK
 - - - EXISTING TRACK TO BE REMOVED
 - ==== PROPOSED STAGE 2 TRACK
 - ▶ DERAILER
 - DD1 DERAILER NUMBERS
 - 7A PTS POINT NUMBERS
 - L LUBRICATOR



PRELIMINARY
 NOT FOR CONSTRUCTION



KEY PLAN
 NTS

Rev.	Date	Revision Details	Drn	Ver.	App.
A5	28/04/12	NCIG DEPARTURE ROAD N03 CHAINAGES AMENDED	NS		
A4	17/01/12	VERIFICATION COMPLETE	NS		
A3	17/11/11	DRAFTING REVIEW COMMENTS INCORPORATED	NS		
A2	06/10/11	BACKGROUND EARTHWORKS MODEL REVISED	NS		
A1	06/09/11	PRELIMINARY ISSUE	NS		

aurecon HATCH
 Aurecon Hatch ABN 21 646 421 651 Telephone: +61 2 9465 5589
 116 Military Road (PO Box 538) Nourail Bay Facsimile: +61 2 9465 5589
 New South Wales 2089 Australia Email: NCIGStage2F@aureconhatch.com

Newcastle Coal
 INFRASTRUCTURE GROUP

Drawn	Signed	Date
NS		
Designed	Signed	Date
NS		
Verified	Signed	Date
SM		
Approved	Signed	Date
DIB		

NCIG COAL EXPORT TERMINAL - STAGE 2F
RAIL AREA
 NCIG ARRIVAL ROADS & DEPART. RD N03
 SETOUT PLAN - SHEET 1 OF 7

Project No.	H337400
Scale	1:500
Sheet Size	A1
Drawing No.	HW03-01-R-82023
Rev.	A5