

Monthly Monitoring Data



Environmental Protection Licence Number: 12693

link to EPL12693 on EPA Public Register: [Click Here](#)

Licensee: Newcastle Coal Infrastructure Group Pty Ltd, Locked Bag 6003, Hunter Region Mail Centre NSW 2310

Premises: Newcastle Coal Infrastructure Group, Cormorant Road, Kooragang NSW 2304

Date Data Obtained: 25 September 2023

Date Published: 25 September 2023

Note: On the 25th of August 2017 an amendment was made to the NCIG Environmental Protection Licence (EPL12693) which removed the requirement for ambient air quality monitoring at Points 7-10 and 14-15. However, NCIG will continue to publish ambient air quality data for these locations previously listed in EPL12693 for the interest of the public.

Depositional Dust Monitoring

Sample Period: 02 June 2023 – 03 July 2023

Units of Measure: Insoluble Solids (grams per square metre per month (g/m²/month))

Frequency: Monthly

	Monitoring Point 7 - DG3 (Kooragang Island)	Monitoring Point 8 - DG4 (Mayfield Sport Rec Club)	Monitoring Point 9 - DG5 (Mayfield West)	Monitoring Point 10 - DG6 (Sandgate)
Depositional Dust	1.1	0.6	0.9	1.9

High Volume Air Sampling

Units of measure: Micrograms per cubic metre (µg/m³)

Frequency: Weekly

	Monitoring Point 14 - HVAS 1 (Steel River, Mayfield West)				Monitoring Point 15 - HVAS 2 (Crebert Street, Mayfield)			
	TSP		PM10		TSP		PM10	
04-Jun-23	28.9	04-Jun-23	13.2	04-Jun-23	32	04-Jun-23	16	
10-Jun-23	*	10-Jun-23	*	10-Jun-23	28	10-Jun-23	21	
16-Jun-23	32.4	16-Jun-23	15.5	16-Jun-23	31	16-Jun-23	15	
22-Jun-23	38.5	22-Jun-23	14.4	22-Jun-23	48	22-Jun-23	24	
28-Jun-23	41.8	28-Jun-23	8.7	28-Jun-23	24	28-Jun-23	10	

NB: Sample period is a 24-hour period on each of the above dates | TSP = Total Suspended Particulates | PM10 = Particulate Matter <10 microns | * Sample contaminated and discarded

6 Monthly Groundwater Monitoring

Sampling Point 1, 38, 39 (Background Monitoring Wells)

Groundwater Sampling Point 1 (GW1)

Sample Date: 11 Sept 2023

Pollutant	Units of Measure	Frequency	Recorded Value
pH	pH units	Every 6 Months	7.10
Conductivity	µS/cm	Every 6 Months	17200
Bromide	mg/L	Every 6 Months	19.4
Aluminium	mg/L	Every 6 Months	<0.01
Arsenic	mg/L	Every 6 Months	<0.001
Cadmium	mg/L	Every 6 Months	<0.0001
Copper	mg/L	Every 6 Months	<0.001
Manganese	mg/L	Every 6 Months	0.207
Nickel	mg/L	Every 6 Months	0.001
Zinc	mg/L	Every 6 Months	<0.005
Iron	mg/L	Every 6 Months	0.07
Total PAH	µg/L	Every 6 Months	<0.5
TPH C6-9 Fraction	µg/L	Every 6 Months	<20
TPH C10-14 Fraction	µg/L	Every 6 Months	<50
TPH C15-28 Fraction	µg/L	Every 6 Months	<100
TPH C29-36 Fraction	µg/L	Every 6 Months	<50
Cyanide (free)	mg/L	Every 6 Months	<0.004
Cyanide (total)	mg/L	Every 6 Months	<0.004

Groundwater Sampling Point 38 (BH21S)

Sample Date: 11 Sept 2023

Pollutant	Units of Measure	Frequency	Recorded Value
pH	pH units	Every 6 Months	10.86
Conductivity	µS/cm	Every 6 Months	2290
Bromide	mg/L	Every 6 Months	2.09
Aluminium	mg/L	Every 6 Months	0.29
Arsenic	mg/L	Every 6 Months	0.002
Cadmium	mg/L	Every 6 Months	<0.0001
Copper	mg/L	Every 6 Months	<0.001
Manganese	mg/L	Every 6 Months	<0.001
Nickel	mg/L	Every 6 Months	0.003
Zinc	mg/L	Every 6 Months	<0.005
Iron	mg/L	Every 6 Months	0.08
Total PAH	µg/L	Every 6 Months	62.5
TPH C6-9 Fraction	µg/L	Every 6 Months	<20
TPH C10-14 Fraction	µg/L	Every 6 Months	180
TPH C15-28 Fraction	µg/L	Every 6 Months	<100
TPH C29-36 Fraction	µg/L	Every 6 Months	<50
Cyanide (free)	mg/L	Every 6 Months	<0.004
Cyanide (total)	mg/L	Every 6 Months	0.206

Groundwater Sampling Point 39 (BH21D)

Sample Date: 11 Sept 2023

Pollutant	Units of Measure	Frequency	Recorded Value
pH	pH units	Every 6 Months	7.22
Conductivity	µS/cm	Every 6 Months	10700
Bromide	mg/L	Every 6 Months	13.1
Aluminium	mg/L	Every 6 Months	<0.01
Arsenic	mg/L	Every 6 Months	<0.001
Cadmium	mg/L	Every 6 Months	<0.0001
Copper	mg/L	Every 6 Months	<0.001
Manganese	mg/L	Every 6 Months	0.251
Nickel	mg/L	Every 6 Months	0.002
Zinc	mg/L	Every 6 Months	<0.005
Iron	mg/L	Every 6 Months	0.08
Total PAH	µg/L	Every 6 Months	23.3
TPH C6-9 Fraction	µg/L	Every 6 Months	<20
TPH C10-14 Fraction	µg/L	Every 6 Months	60
TPH C15-28 Fraction	µg/L	Every 6 Months	<100
TPH C29-36 Fraction	µg/L	Every 6 Months	<50
Cyanide (free)	mg/L	Every 6 Months	<0.004
Cyanide (total)	mg/L	Every 6 Months	0.095

Sampling Point 20,21,22,23,36,37,40,41 (Regular Monitoring Wells)

Groundwater Sampling Point 20 (K9/3N)

Sample Date: 20 June 2023

Pollutant	Units of Measure	Frequency	Recorded Value	Exceedance (Yes/No)*
pH	pH units	Every 6 Months	7.23	No
Conductivity	µS/cm	Every 6 Months	18200	No
Bromide	mg/L	Every 6 Months	15.6	No
Aluminium	mg/L	Every 6 Months	<0.01	No
Arsenic	mg/L	Every 6 Months	<0.001	No
Cadmium	mg/L	Every 6 Months	<0.0001	No
Copper	mg/L	Every 6 Months	<0.001	No
Manganese	mg/L	Every 6 Months	0.658	No
Nickel	mg/L	Every 6 Months	0.001	No
Zinc	mg/L	Every 6 Months	0.019	No
Iron	mg/L	Every 6 Months	0.05	No
Total PAH	µg/L	Every 6 Months	<0.5	No
TPH C6-9 Fraction	µg/L	Every 6 Months	<20	No
TPH C10-14 Fraction	µg/L	Every 6 Months	<50	No
TPH C15-28 Fraction	µg/L	Every 6 Months	<100	No
TPH C29-36 Fraction	µg/L	Every 6 Months	<50	No
Cyanide (free)	mg/L	Every 6 Months	<0.004	No
Cyanide (total)	mg/L	Every 6 Months	<0.004	No

Note: If trigger level is exceeded, actions listed in Condition E1.2 of EPL12693 are to be followed. These actions include notifying the EPA and resampling the location to confirm the elevated concentration.

* Trigger Condition 1 and 2 recalculated each sampling round.

Groundwater Sampling Point 21 (K9/3S)

Sample Date: 20 June 2023

Pollutant	Units of Measure	Frequency	Recorded Value	Exceedance (Yes/No)*
pH	pH units	Every 6 Months	8.02	No
Conductivity	µS/cm	Every 6 Months	3360	Yes
Bromide	mg/L	Every 6 Months	1.98	No
Aluminium	mg/L	Every 6 Months	0.01	No
Arsenic	mg/L	Every 6 Months	0.003	No
Cadmium	mg/L	Every 6 Months	<0.0001	No
Copper	mg/L	Every 6 Months	<0.001	No
Manganese	mg/L	Every 6 Months	0.103	No
Nickel	mg/L	Every 6 Months	0.001	No
Zinc	mg/L	Every 6 Months	<0.005	No
Iron	mg/L	Every 6 Months	<0.05	No
Total PAH	µg/L	Every 6 Months	<0.5	No
TPH C6-9 Fraction	µg/L	Every 6 Months	<20	No
TPH C10-14 Fraction	µg/L	Every 6 Months	<50	No
TPH C15-28 Fraction	µg/L	Every 6 Months	<100	No
TPH C29-36 Fraction	µg/L	Every 6 Months	<50	No
Cyanide (free)	mg/L	Every 6 Months	<0.004	No
Cyanide (total)	mg/L	Every 6 Months	<0.004	No

Note: If trigger level is exceeded, actions listed in Condition E1.2 of EPL12693 are to be followed. These actions include notifying the EPA and resampling the location to confirm the elevated concentration.

* Trigger Condition 1 and 2 recalculated each sampling round.

Groundwater Sampling Point 22 (K11/1)**Sample Date:** 22 June 2023

Pollutant	Units of Measure	Frequency	Recorded Value	Exceedance (Yes/No)*
pH	pH units	Every 6 Months	7.60	No
Conductivity	µS/cm	Every 6 Months	836	No
Bromide	mg/L	Every 6 Months	0.429	No
Aluminium	mg/L	Every 6 Months	<0.01	No
Arsenic	mg/L	Every 6 Months	<0.001	No
Cadmium	mg/L	Every 6 Months	<0.0001	No
Copper	mg/L	Every 6 Months	<0.001	No
Manganese	mg/L	Every 6 Months	0.641	No
Nickel	mg/L	Every 6 Months	<0.001	No
Zinc	mg/L	Every 6 Months	0.016	No
Iron	mg/L	Every 6 Months	0.12	No
Total PAH	µg/L	Every 6 Months	<0.5	No
TPH C6-9 Fraction	µg/L	Every 6 Months	<20	No
TPH C10-14 Fraction	µg/L	Every 6 Months	<50	No
TPH C15-28 Fraction	µg/L	Every 6 Months	<100	No
TPH C29-36 Fraction	µg/L	Every 6 Months	<50	No
Cyanide (free)	mg/L	Every 6 Months	<0.004	No
Cyanide (total)	mg/L	Every 6 Months	<0.004	No

Note: If trigger level is exceeded, actions listed in Condition E1.2 of EPL12693 are to be followed. These actions include notifying the EPA and resampling the location to confirm the elevated concentration.

* Trigger Condition 1 and 2 recalculated each sampling round.

Groundwater Sampling Point 23 (K11/1S)

Sample Date: 22 June 2023

Pollutant	Units of Measure	Frequency	Recorded Value	Exceedance (Yes/No)*
pH	pH units	Every 6 Months	8.04	No
Conductivity	µS/cm	Every 6 Months	7260	No
Bromide	mg/L	Every 6 Months	19.9	Yes
Aluminium	mg/L	Every 6 Months	<0.01	No
Arsenic	mg/L	Every 6 Months	<0.001	No
Cadmium	mg/L	Every 6 Months	<0.0001	No
Copper	mg/L	Every 6 Months	<0.001	No
Manganese	mg/L	Every 6 Months	0.093	No
Nickel	mg/L	Every 6 Months	<0.001	No
Zinc	mg/L	Every 6 Months	<0.005	No
Iron	mg/L	Every 6 Months	0.05	No
Total PAH	µg/L	Every 6 Months	<0.5	No
TPH C6-9 Fraction	µg/L	Every 6 Months	<20	No
TPH C10-14 Fraction	µg/L	Every 6 Months	50	No
TPH C15-28 Fraction	µg/L	Every 6 Months	<100	No
TPH C29-36 Fraction	µg/L	Every 6 Months	<50	No
Cyanide (free)	mg/L	Every 6 Months	<0.004	No
Cyanide (total)	mg/L	Every 6 Months	<0.004	No

Note: If trigger level is exceeded, actions listed in Condition E1.2 of EPL12693 are to be followed. These actions include notifying the EPA and resampling the location to confirm the elevated concentration.

* Trigger Condition 1 and 2 recalculated each sampling round.

Groundwater Sampling Point 36 (BH20S)

Sample Date: 22 June 2023

Pollutant	Units of Measure	Frequency	Recorded Value	Exceedance (Yes/No)*
pH	pH units	Every 6 Months	6.36	Yes
Conductivity	µS/cm	Every 6 Months	45100	Yes
Bromide	mg/L	Every 6 Months	41.5	Yes
Aluminium	mg/L	Every 6 Months	<0.10	No
Arsenic	mg/L	Every 6 Months	<0.010	No
Cadmium	mg/L	Every 6 Months	<0.0010	No
Copper	mg/L	Every 6 Months	<0.010	No
Manganese	mg/L	Every 6 Months	9.81	Yes
Nickel	mg/L	Every 6 Months	0.022	Yes
Zinc	mg/L	Every 6 Months	<0.050	Yes
Iron	mg/L	Every 6 Months	41.8	Yes
Total PAH	µg/L	Every 6 Months	<0.5	No
TPH C6-9 Fraction	µg/L	Every 6 Months	<20	No
TPH C10-14 Fraction	µg/L	Every 6 Months	<50	No
TPH C15-28 Fraction	µg/L	Every 6 Months	<100	No
TPH C29-36 Fraction	µg/L	Every 6 Months	<50	No
Cyanide (free)	mg/L	Every 6 Months	<0.004	No
Cyanide (total)	mg/L	Every 6 Months	<0.004	No

Note: If trigger level is exceeded, actions listed in Condition E1.2 of EPL12693 are to be followed. These actions include notifying the EPA and resampling the location to confirm the elevated concentration.

* Trigger Condition 1 and 2 recalculated each sampling round.

Groundwater Sampling Point 37 (BH20D)

Sample Date: 22 June 2023

Pollutant	Units of Measure	Frequency	Recorded Value	Exceedance (Yes/No)*
pH	pH units	Every 6 Months	7.03	No
Conductivity	µS/cm	Every 6 Months	1010	No
Bromide	mg/L	Every 6 Months	0.177	No
Aluminium	mg/L	Every 6 Months	<0.01	No
Arsenic	mg/L	Every 6 Months	0.003	No
Cadmium	mg/L	Every 6 Months	<0.0001	No
Copper	mg/L	Every 6 Months	<0.001	No
Manganese	mg/L	Every 6 Months	1.64	No
Nickel	mg/L	Every 6 Months	0.001	No
Zinc	mg/L	Every 6 Months	0.027	No
Iron	mg/L	Every 6 Months	0.68	No
Total PAH	µg/L	Every 6 Months	<0.5	No
TPH C6-9 Fraction	µg/L	Every 6 Months	<20	No
TPH C10-14 Fraction	µg/L	Every 6 Months	<50	No
TPH C15-28 Fraction	µg/L	Every 6 Months	<100	No
TPH C29-36 Fraction	µg/L	Every 6 Months	<50	No
Cyanide (free)	mg/L	Every 6 Months	<0.004	No
Cyanide (total)	mg/L	Every 6 Months	<0.004	No

Note: If trigger level is exceeded, actions listed in Condition E1.2 of EPL12693 are to be followed. These actions include notifying the EPA and resampling the location to confirm the elevated concentration.

* Trigger Condition 1 and 2 recalculated each sampling round.

Groundwater Sampling Point 40 (BH23S)

Sample Date: 22 June 2023

Pollutant	Units of Measure	Frequency	Recorded Value	Exceedance (Yes/No)*
pH	pH units	Every 6 Months	8.31	No
Conductivity	µS/cm	Every 6 Months	1020	No
Bromide	mg/L	Every 6 Months	0.593	No
Aluminium	mg/L	Every 6 Months	0.02	No
Arsenic	mg/L	Every 6 Months	0.002	No
Cadmium	mg/L	Every 6 Months	<0.0001	No
Copper	mg/L	Every 6 Months	<0.001	No
Manganese	mg/L	Every 6 Months	0.362	No
Nickel	mg/L	Every 6 Months	0.002	No
Zinc	mg/L	Every 6 Months	<0.005	No
Iron	mg/L	Every 6 Months	<0.05	No
Total PAH	µg/L	Every 6 Months	4.6	No
TPH C6-9 Fraction	µg/L	Every 6 Months	<20	No
TPH C10-14 Fraction	µg/L	Every 6 Months	<50	No
TPH C15-28 Fraction	µg/L	Every 6 Months	<100	No
TPH C29-36 Fraction	µg/L	Every 6 Months	<50	No
Cyanide (free)	mg/L	Every 6 Months	<0.004	No
Cyanide (total)	mg/L	Every 6 Months	0.012	No

Note: If trigger level is exceeded, actions listed in Condition E1.2 of EPL12693 are to be followed. These actions include notifying the EPA and resampling the location to confirm the elevated concentration.

* Trigger Condition 1 and 2 recalculated each sampling round.

Groundwater Sampling Point 41 (BH23D)

Sample Date: 22 June 2023

Pollutant	Units of Measure	Frequency	Recorded Value	Exceedance (Yes/No)*
pH	pH units	Every 6 Months	6.96	No
Conductivity	µS/cm	Every 6 Months	17700	No
Bromide	mg/L	Every 6 Months	124	Yes
Aluminium	mg/L	Every 6 Months	<0.01	No
Arsenic	mg/L	Every 6 Months	<0.001	No
Cadmium	mg/L	Every 6 Months	<0.0001	No
Copper	mg/L	Every 6 Months	<0.001	No
Manganese	mg/L	Every 6 Months	0.818	No
Nickel	mg/L	Every 6 Months	0.001	No
Zinc	mg/L	Every 6 Months	0.017	No
Iron	mg/L	Every 6 Months	10.2	No
Total PAH	µg/L	Every 6 Months	<0.5	No
TPH C6-9 Fraction	µg/L	Every 6 Months	<20	No
TPH C10-14 Fraction	µg/L	Every 6 Months	<50	No
TPH C15-28 Fraction	µg/L	Every 6 Months	<100	No
TPH C29-36 Fraction	µg/L	Every 6 Months	<50	No
Cyanide (free)	mg/L	Every 6 Months	<0.004	No
Cyanide (total)	mg/L	Every 6 Months	<0.004	No

Note: If trigger level is exceeded, actions listed in Condition E1.2 of EPL12693 are to be followed. These actions include notifying the EPA and resampling the location to confirm the elevated concentration.

* Trigger Condition 1 and 2 recalculated each sampling round.

Sampling Point 24,25,26,27,28,29,30,31,32,33 (Additional Contingency Wells)

Groundwater Sampling Point BHe23S (Note: BHe23S has been used as a substitute to Monitoring Point 24 (K11/3E), which no longer exists due to previous impacts to the bore).

Sample Date: N/A

Note: Sampling Point BHe23S was unable to be sampled in this monitoring round as the well was dry. Dipped 20 June 2023.

Groundwater Sampling Point BHe23D (Note: BHe23D has been used as a substitute to Monitoring Point 25 (K11/3W), which no longer exists due to previous impacts to the bore).

Sample Date: 20 June 2023

Pollutant	Units of Measure	Frequency	Recorded Value
pH	pH units	Special Frequency 1	7.34
Conductivity	µS/cm	Special Frequency 1	15000
Bromide	mg/L	Special Frequency 1	13
Aluminium	mg/L	Special Frequency 1	<0.01
Arsenic	mg/L	Special Frequency 1	<0.001
Cadmium	mg/L	Special Frequency 1	<0.0001
Copper	mg/L	Special Frequency 1	<0.001
Manganese	mg/L	Special Frequency 1	0.859
Nickel	mg/L	Special Frequency 1	0.001
Zinc	mg/L	Special Frequency 1	0.008
Iron	mg/L	Special Frequency 1	0.07
Total PAH	µg/L	Special Frequency 1	<0.5
TPH C6-9 Fraction	µg/L	Special Frequency 1	<20
TPH C10-14 Fraction	µg/L	Special Frequency 1	<50
TPH C15-28 Fraction	µg/L	Special Frequency 1	<100
TPH C29-36 Fraction	µg/L	Special Frequency 1	<50
Cyanide (free)	mg/L	Special Frequency 1	<0.004
Cyanide (total)	mg/L	Special Frequency 1	<0.004

Note: For the purposes of the table(s) above Special Frequency 1 means the collection of samples on a six monthly basis if trigger conditions specified in condition E1.1 of EPL12693 are exceeded.

Groundwater Sampling Point 26 (K11/2W)

Sample Date: 20 June 2023

Pollutant	Units of Measure	Frequency	Recorded Value
pH	pH units	Special Frequency 1	7.67
Conductivity	µS/cm	Special Frequency 1	7360
Bromide	mg/L	Special Frequency 1	5.26
Aluminium	mg/L	Special Frequency 1	0.01
Arsenic	mg/L	Special Frequency 1	<0.001
Cadmium	mg/L	Special Frequency 1	<0.0001
Copper	mg/L	Special Frequency 1	<0.001
Manganese	mg/L	Special Frequency 1	0.058
Nickel	mg/L	Special Frequency 1	0.001
Zinc	mg/L	Special Frequency 1	0.01
Iron	mg/L	Special Frequency 1	<0.05
Total PAH	µg/L	Special Frequency 1	<0.5
TPH C6-9 Fraction	µg/L	Special Frequency 1	<20
TPH C10-14 Fraction	µg/L	Special Frequency 1	<50
TPH C15-28 Fraction	µg/L	Special Frequency 1	<100
TPH C29-36 Fraction	µg/L	Special Frequency 1	<50
Cyanide (free)	mg/L	Special Frequency 1	<0.004
Cyanide (total)	mg/L	Special Frequency 1	<0.004

Note: For the purposes of the table(s) above Special Frequency 1 means the collection of samples on a six monthly basis if trigger conditions specified in condition E1.1 of EPL12693 are exceeded.

Groundwater Sampling Point 27 (K11/2E)**Sample Date:** 20 June 2023

Pollutant	Units of Measure	Frequency	Recorded Value
pH	pH units	Special Frequency 1	7.49
Conductivity	µS/cm	Special Frequency 1	1230
Bromide	mg/L	Special Frequency 1	0.329
Aluminium	mg/L	Special Frequency 1	<0.01
Arsenic	mg/L	Special Frequency 1	0.011
Cadmium	mg/L	Special Frequency 1	<0.0001
Copper	mg/L	Special Frequency 1	<0.001
Manganese	mg/L	Special Frequency 1	0.397
Nickel	mg/L	Special Frequency 1	<0.001
Zinc	mg/L	Special Frequency 1	0.014
Iron	mg/L	Special Frequency 1	4.45
Total PAH	µg/L	Special Frequency 1	<0.5
TPH C6-9 Fraction	µg/L	Special Frequency 1	<20
TPH C10-14 Fraction	µg/L	Special Frequency 1	<50
TPH C15-28 Fraction	µg/L	Special Frequency 1	<100
TPH C29-36 Fraction	µg/L	Special Frequency 1	<50
Cyanide (free)	mg/L	Special Frequency 1	<0.004
Cyanide (total)	mg/L	Special Frequency 1	<0.004

Note: For the purposes of the table(s) above Special Frequency 1 means the collection of samples on a six monthly basis if trigger conditions specified in condition E1.1 of EPL12693 are exceeded.

Groundwater Sampling Point 28 (K9/4W)

Sample Date: 21 June 2023

Pollutant	Units of Measure	Frequency	Recorded Value
pH	pH units	Special Frequency 1	7.39
Conductivity	µS/cm	Special Frequency 1	7200
Bromide	mg/L	Special Frequency 1	11.6
Aluminium	mg/L	Special Frequency 1	<0.01
Arsenic	mg/L	Special Frequency 1	<0.001
Cadmium	mg/L	Special Frequency 1	<0.0001
Copper	mg/L	Special Frequency 1	<0.001
Manganese	mg/L	Special Frequency 1	0.141
Nickel	mg/L	Special Frequency 1	0.001
Zinc	mg/L	Special Frequency 1	0.023
Iron	mg/L	Special Frequency 1	1.86
Total PAH	µg/L	Special Frequency 1	<0.5
TPH C6-9 Fraction	µg/L	Special Frequency 1	<20
TPH C10-14 Fraction	µg/L	Special Frequency 1	<50
TPH C15-28 Fraction	µg/L	Special Frequency 1	<100
TPH C29-36 Fraction	µg/L	Special Frequency 1	<50
Cyanide (free)	mg/L	Special Frequency 1	<0.004
Cyanide (total)	mg/L	Special Frequency 1	<0.004

Note: For the purposes of the table(s) above Special Frequency 1 means the collection of samples on a six monthly basis if trigger conditions specified in condition E1.1 of EPL12693 are exceeded.

Groundwater Sampling Point 29 (K9/4E)

Sample Date: 21 June 2023

Pollutant	Units of Measure	Frequency	Recorded Value
pH	pH units	Special Frequency 1	7.26
Conductivity	µS/cm	Special Frequency 1	10300
Bromide	mg/L	Special Frequency 1	38.1
Aluminium	mg/L	Special Frequency 1	0.01
Arsenic	mg/L	Special Frequency 1	0.003
Cadmium	mg/L	Special Frequency 1	<0.0001
Copper	mg/L	Special Frequency 1	0.007
Manganese	mg/L	Special Frequency 1	1.48
Nickel	mg/L	Special Frequency 1	0.003
Zinc	mg/L	Special Frequency 1	0.031
Iron	mg/L	Special Frequency 1	<0.05
Total PAH	µg/L	Special Frequency 1	<0.5
TPH C6-9 Fraction	µg/L	Special Frequency 1	<20
TPH C10-14 Fraction	µg/L	Special Frequency 1	<50
TPH C15-28 Fraction	µg/L	Special Frequency 1	<100
TPH C29-36 Fraction	µg/L	Special Frequency 1	<50
Cyanide (free)	mg/L	Special Frequency 1	<0.004
Cyanide (total)	mg/L	Special Frequency 1	<0.004

Note: For the purposes of the table(s) above Special Frequency 1 means the collection of samples on a six monthly basis if trigger conditions specified in condition E1.1 of EPL12693 are exceeded.

Groundwater Sampling Point 30 (K9/2W)

Sample Date: 21 June 2023

Pollutant	Units of Measure	Frequency	Recorded Value
pH	pH units	Special Frequency 1	7.4
Conductivity	µS/cm	Special Frequency 1	5470
Bromide	mg/L	Special Frequency 1	10.8
Aluminium	mg/L	Special Frequency 1	<0.01
Arsenic	mg/L	Special Frequency 1	0.003
Cadmium	mg/L	Special Frequency 1	<0.0001
Copper	mg/L	Special Frequency 1	<0.001
Manganese	mg/L	Special Frequency 1	0.312
Nickel	mg/L	Special Frequency 1	<0.001
Zinc	mg/L	Special Frequency 1	<0.005
Iron	mg/L	Special Frequency 1	0.1
Total PAH	µg/L	Special Frequency 1	<0.5
TPH C6-9 Fraction	µg/L	Special Frequency 1	<20
TPH C10-14 Fraction	µg/L	Special Frequency 1	<50
TPH C15-28 Fraction	µg/L	Special Frequency 1	<100
TPH C29-36 Fraction	µg/L	Special Frequency 1	<50
Cyanide (free)	mg/L	Special Frequency 1	<0.004
Cyanide (total)	mg/L	Special Frequency 1	<0.004

Note: For the purposes of the table(s) above Special Frequency 1 means the collection of samples on a six monthly basis if trigger conditions specified in condition E1.1 of EPL12693 are exceeded.

Groundwater Sampling Point 31 (K9/2E)**Sample Date:** 21 June 2023

Pollutant	Units of Measure	Frequency	Recorded Value
pH	pH units	Special Frequency 1	7.31
Conductivity	µS/cm	Special Frequency 1	28200
Bromide	mg/L	Special Frequency 1	164
Aluminium	mg/L	Special Frequency 1	<0.01
Arsenic	mg/L	Special Frequency 1	<0.001
Cadmium	mg/L	Special Frequency 1	<0.0001
Copper	mg/L	Special Frequency 1	<0.001
Manganese	mg/L	Special Frequency 1	0.5
Nickel	mg/L	Special Frequency 1	<0.001
Zinc	mg/L	Special Frequency 1	0.009
Iron	mg/L	Special Frequency 1	0.3
Total PAH	µg/L	Special Frequency 1	<0.5
TPH C6-9 Fraction	µg/L	Special Frequency 1	<20
TPH C10-14 Fraction	µg/L	Special Frequency 1	<50
TPH C15-28 Fraction	µg/L	Special Frequency 1	<100
TPH C29-36 Fraction	µg/L	Special Frequency 1	<50
Cyanide (free)	mg/L	Special Frequency 1	<0.004
Cyanide (total)	mg/L	Special Frequency 1	<0.004

Note: For the purposes of the table(s) above Special Frequency 1 means the collection of samples on a six monthly basis if trigger conditions specified in condition E1.1 of EPL12693 are exceeded.

Groundwater Sampling Point BHe29D (Note: BHe29D has been used as a substitute to Monitoring Point 32 (K10/4W), which no longer exists due to previous impacts to the bore).

Sample Date: 20 June 2023

Pollutant	Units of Measure	Frequency	Recorded Value
pH	pH units	Special Frequency 1	7.67
Conductivity	µS/cm	Special Frequency 1	6770
Bromide	mg/L	Special Frequency 1	19.8
Aluminium	mg/L	Special Frequency 1	<0.01
Arsenic	mg/L	Special Frequency 1	<0.001
Cadmium	mg/L	Special Frequency 1	<0.0001
Copper	mg/L	Special Frequency 1	<0.001
Manganese	mg/L	Special Frequency 1	0.111
Nickel	mg/L	Special Frequency 1	<0.001
Zinc	mg/L	Special Frequency 1	0.009
Iron	mg/L	Special Frequency 1	<0.05
Total PAH	µg/L	Special Frequency 1	<0.5
TPH C6-9 Fraction	µg/L	Special Frequency 1	<20
TPH C10-14 Fraction	µg/L	Special Frequency 1	<50
TPH C15-28 Fraction	µg/L	Special Frequency 1	<100
TPH C29-36 Fraction	µg/L	Special Frequency 1	<50
Cyanide (free)	mg/L	Special Frequency 1	<0.004
Cyanide (total)	mg/L	Special Frequency 1	<0.004

Note: For the purposes of the table(s) above Special Frequency 1 means the collection of samples on a six monthly basis if trigger conditions specified in condition E1.1 of EPL12693 are exceeded.

Groundwater Sampling Point BHe26S (Note: BHe26S has been used as a substitute to Monitoring Point 33 (DM10), which no longer exists due to previous impacts to the bore).

Sample Date: 20 June 2023

Pollutant	Units of Measure	Frequency	Recorded Value
pH	pH units	Special Frequency 1	7.98
Conductivity	µS/cm	Special Frequency 1	2830
Bromide	mg/L	Special Frequency 1	1.58
Aluminium	mg/L	Special Frequency 1	<0.01
Arsenic	mg/L	Special Frequency 1	0.004
Cadmium	mg/L	Special Frequency 1	<0.0001
Copper	mg/L	Special Frequency 1	<0.001
Manganese	mg/L	Special Frequency 1	0.165
Nickel	mg/L	Special Frequency 1	0.002
Zinc	mg/L	Special Frequency 1	<0.005
Iron	mg/L	Special Frequency 1	<0.05
Total PAH	µg/L	Special Frequency 1	<0.5
TPH C6-9 Fraction	µg/L	Special Frequency 1	<20
TPH C10-14 Fraction	µg/L	Special Frequency 1	<50
TPH C15-28 Fraction	µg/L	Special Frequency 1	<100
TPH C29-36 Fraction	µg/L	Special Frequency 1	<50
Cyanide (free)	mg/L	Special Frequency 1	<0.004
Cyanide (total)	mg/L	Special Frequency 1	<0.004

Note: For the purposes of the table(s) above Special Frequency 1 means the collection of samples on a six monthly basis if trigger conditions specified in condition E1.1 of EPL12693 are exceeded.

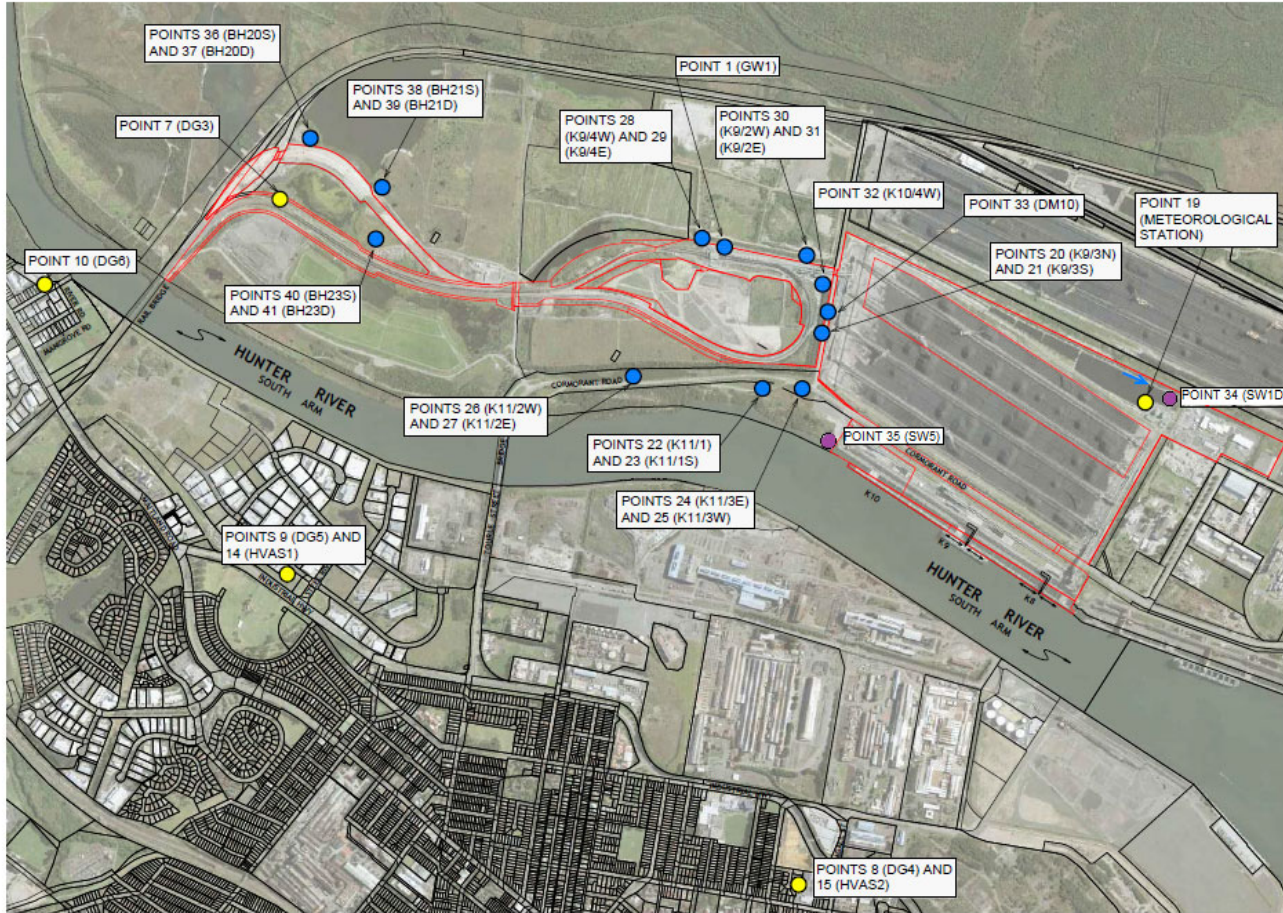


Figure 1: Groundwater, Surface Water and Additional Ambient Air Quality Monitoring Locations.