

# Monthly Monitoring Data

**Environmental Protection Licence Number:** 12693

**link to EPL12693 on EPA Public Register:** [Click Here](#)

**Licensee:** Newcastle Coal Infrastructure Group Pty Ltd, Locked Bag 6003, Hunter Region Mail Centre NSW 2310

**Premises:** Newcastle Coal Infrastructure Group, Cormorant Road, Kooragang NSW 2304

**Date Data Obtained:** 25 July 2024

**Date Published:** 26 July 2024

**Note:** On the 25<sup>th</sup> of August 2017 an amendment was made to the NCIG Environmental Protection Licence (EPL12693) which removed the requirement for ambient air quality monitoring at Points 7-10 and 14-15. However, NCIG will continue to publish ambient air quality data for these locations previously listed in EPL12693 for the interest of the public.

## Depositional Dust Monitoring

**Sample Period:** 3 June 2024 – 4 July 2024

**Units of Measure:** Insoluble Solids (grams per square metre per month (g/m<sup>2</sup>/month))

**Frequency:** Monthly

	DG3 (Kooragang Island)	DG4 (Mayfield Sport Rec Club)	DG5 (Mayfield West)	DG6 (Sandgate)
<b>Depositional Dust</b>	0.4	0.4	0.3	1.4

## High Volume Air Sampling

**Units of measure:** Micrograms per cubic metre (µg/m<sup>3</sup>)

**Frequency:** Weekly

	HVAS 1 (Steel River, Mayfield West)				HVAS 2 (Crebert Street, Mayfield)			
	TSP		PM10		TSP		PM10	
<b>05-Jun-24</b>	31.8	<b>05-Jun-24</b>	17.3	<b>04-Jun-24</b>	19	<b>04-Jun-24</b>	9	
<b>11-Jun-24</b>	28.1	<b>11-Jun-24</b>	13.9	<b>10-Jun-24</b>	14	<b>10-Jun-24</b>	7	
<b>17-Jun-24</b>	20.7	<b>17-Jun-24</b>	8.7	<b>16-Jun-24</b>	14	<b>16-Jun-24</b>	10	
<b>23-Jun-24</b>	44.2	<b>23-Jun-24</b>	8.9	<b>22-Jun-24</b>	14	<b>22-Jun-24</b>	6	
<b>29-Jun-24</b>	30.1	<b>29-Jun-24</b>	17.1	<b>28-Jun-24</b>	37	<b>28-Jun-24</b>	18	

NB: Sample period is a 24-hour period on each of the above dates | TSP = Total Suspended Particulates | PM10 = Particulate Matter <10 microns

**Discharge Water Quality Monitoring**

**Date Data Obtained:** 1 July 2024

**Discharge Quality Monitoring – Point 34**

**Sample Dates:** 1-25, May 2024

**Frequency Requirement:** Daily during discharge

Pollutant	Units of Measure	No. of times measured during discharge event	Min value	Mean value	Median value	Max value
Oil and Grease	mg/L	25	<5	<5	<5	<5
pH	pH units	25	7.00	7.72	7.80	8.65
Total Suspended Solids	mg/L	25	5	8.00	8.43	15.00

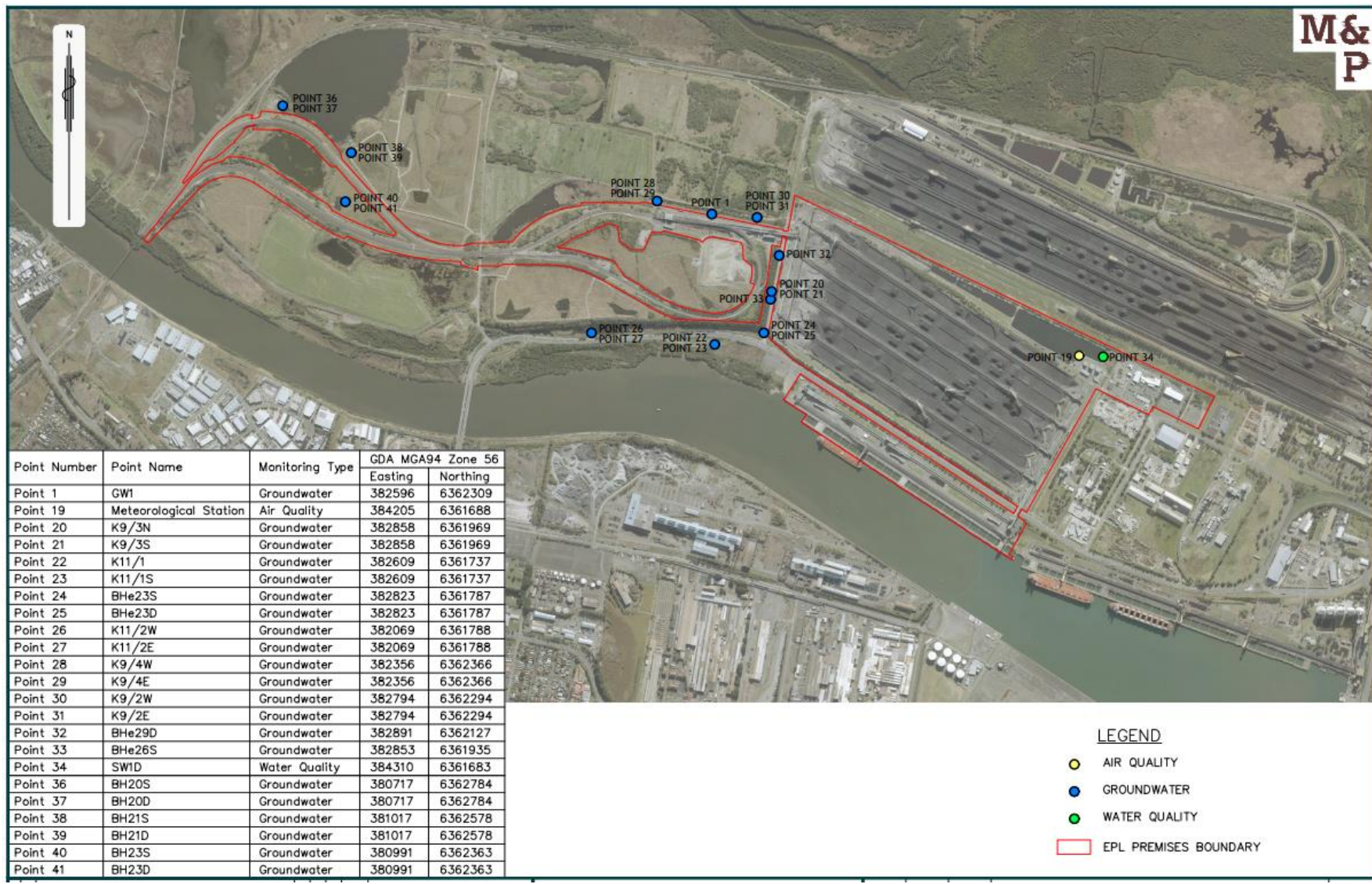


Figure 1: Groundwater, Surface Water and Additional Ambient Air Quality Monitoring Locations.