

Monthly Monitoring Data

Environmental Protection Licence Number: 12693

link to EPL12693 on EPA Public Register: [Click Here](#)

Licensee: Newcastle Coal Infrastructure Group Pty Ltd, Locked Bag 6003, Hunter Region Mail Centre NSW 2310

Premises: Newcastle Coal Infrastructure Group, Cormorant Road, Kooragang NSW 2304

Date Data Obtained: 28 Feb 2025

Date Published: 3 Mar 2025

Note: On the 25th of August 2017 an amendment was made to the NCIG Environmental Protection Licence (EPL12693) which removed the requirement for ambient air quality monitoring at Points 7-10 and 14-15. However, NCIG will continue to publish ambient air quality data for these locations previously listed in EPL12693 for the interest of the public.

Depositional Dust Monitoring

Sample Period: 2 Jan 2025 – 3 Feb 2025

Units of Measure: Insoluble Solids (grams per square metre per month (g/m²/month))

Frequency: Monthly

	DG3 (Kooragang Island)	DG4 (Mayfield Sport Rec Club)	DG5 (Mayfield West)	DG6 (Sandgate)
Depositional Dust	2.1	1.3	0.8	5.4

High Volume Air Sampling

Units of measure: Micrograms per cubic metre (µg/m³)

Frequency: Weekly

	HVAS 1 (Steel River, Mayfield West)			HVAS 2 (Crebert Street, Mayfield)			
	TSP	PM10		TSP		PM10	
01-Jan-25	33.2	01-Jan-25	20.8	06-Jan-25	51	06-Jan-25	31
07-Jan-25	20.2	07-Jan-25	11.7	12-Jan-25	29	12-Jan-25	12
13-Jan-25	30.6	13-Jan-25	18	18-Jan-25	44	18-Jan-25	17
19-Jan-25	40.5	19-Jan-25	22.8	24-Jan-25	36	24-Jan-25	19
25-Jan-25	35.5	25-Jan-25	17	30-Jan-25	24	30-Jan-25	12
31-Jan-25	20.8	31-Jan-25	6.1				

NB: Sample period is a 24-hour period on each of the above dates | TSP = Total Suspended Particulates | PM10 = Particulate Matter <10 microns

Discharge Water Quality Monitoring

Date data Obtained: 4/2/25

Discharge Quality Monitoring – Pont 34

Sample Dates: 18/1/25 – 23/1/25

Frequency requirement: Daily during discharge

Pollutant	Units of Measure	No. times measured during discharge event	Min value	Mean value	Median Value	Max value
Oil and Grease	mg/L	6	<5	<5	<5	<5
pH	pH units	6	7.0	7.42	7.4	8.00
Total Suspended Solids	mg/L	6	7	23.5	23.5	45.0

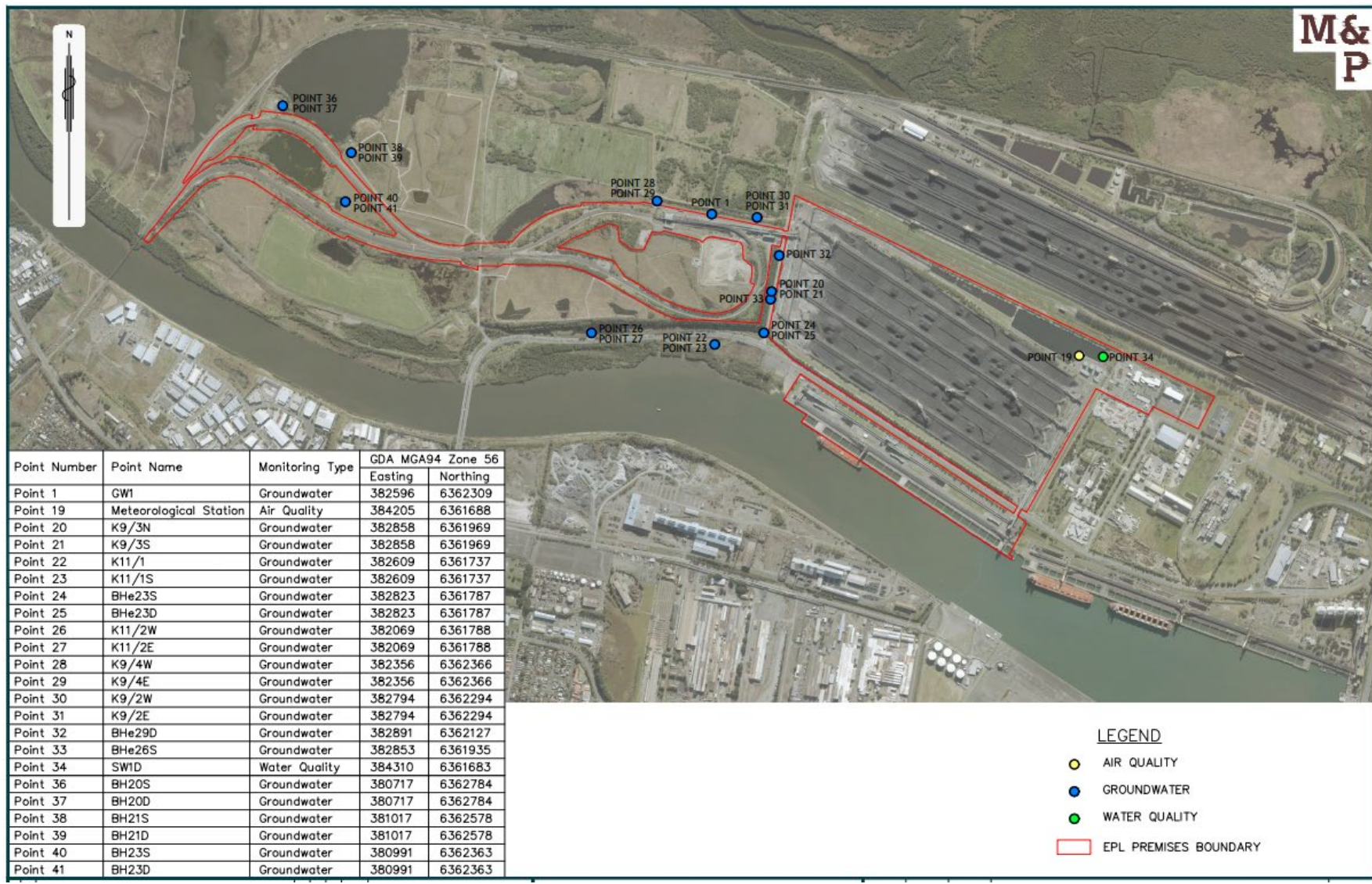


Figure 1: Groundwater, Surface Water and Additional Ambient Air Quality Monitoring Locations.