

Monthly Monitoring Data



Environmental Protection Licence Number: 12693

link to EPL12693 on EPA Public Register: [Click Here](#)

Licensee: Newcastle Coal Infrastructure Group Pty Ltd, Locked Bag 6003, Hunter Region Mail Centre NSW 2310

Premises: Newcastle Coal Infrastructure Group, Cormorant Road, Kooragang NSW 2304

Date Data Obtained: 25 June 2025

Date Published: 25 June 2025

Note: On the 25th of August 2017 an amendment was made to the NCIG Environmental Protection Licence (EPL12693) which removed the requirement for ambient air quality monitoring at Points 7-10 and 14-15. However, NCIG will continue to publish ambient air quality data for these locations previously listed in EPL12693 for the interest of the public.

Depositional Dust Monitoring

Sample Period: 8 May 2025 – 5 June 2025

Units of Measure: Insoluble Solids (grams per square metre per month (g/m²/month))

Frequency: Monthly

	DG3 (Kooragang Island)	DG4 (Mayfield Sport Rec Club)	DG5 (Mayfield West)	DG6 (Sandgate)
Depositional Dust	1.4	0.1	0.4	1.1

High Volume Air Sampling

Units of measure: Micrograms per cubic metre (µg/m³)

Frequency: Weekly

	HVAS 1 (Steel River, Mayfield West)				HVAS 2 (Crebert Street, Mayfield)			
	TSP	PM10			TSP		PM10	
01-May-25	20.0	01-May-25	12.7	06-May-25	30	06-May-25	18	
07-May-25	38.5	07-May-25	17.1	12-May-25	16	12-May-25	10	
13-May-25	20.8	13-May-25	8.3	18-May-25	21	18-May-25	13	
19-May-25	22.3	19-May-25	10.2	24-May-25	16	24-May-25	18	
25-May-25	21.5	25-May-25	10.1	30-May-25	26	30-May-25	17	
31-May-25	26.0	31-May-25	11.0					

Discharge Water Quality Monitoring

Date data Obtained: 2/5/25

Discharge Quality Monitoring – Pont 34

Sample Dates: 27/4/25 – 30/4/25

Frequency requirement: Daily during discharge

Pollutant	Units of Measure	No. times measured during discharge event	Min value	Mean value	Median Value	Max value
Oil and Grease	mg/L	31	<5	<5	<5	<5
pH	pH units	31	7.4	7.9	8.0	8.4
Total Suspended Solids	mg/L	31	7	26	21	71

NB: Sample period is a 24-hour period on each of the above dates | TSP = Total Suspended Particulates | PM10 = Particulate Matter <10 microns

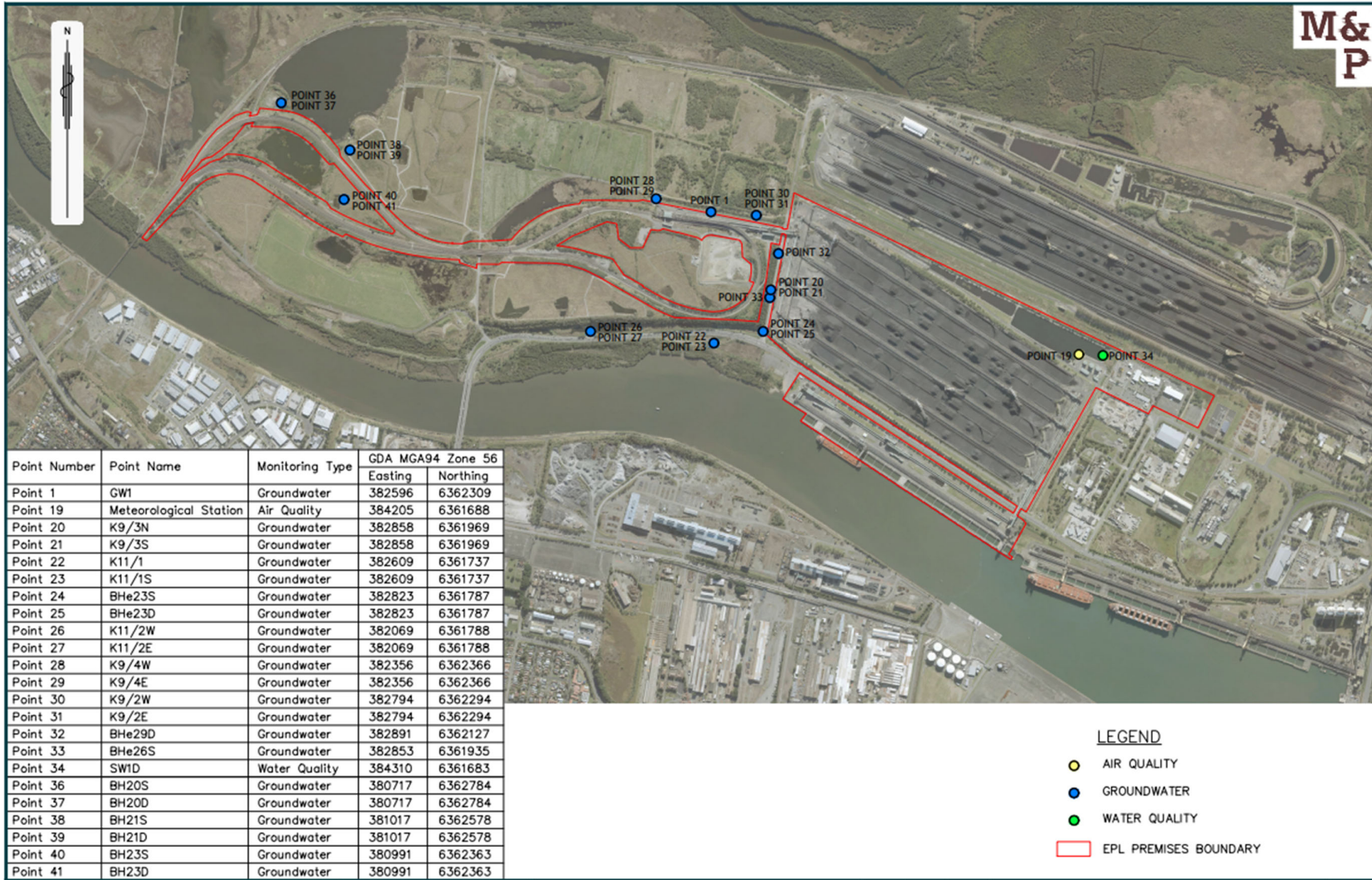


Figure 1: Groundwater, Surface Water and Additional Ambient Air Quality Monitoring Locations.