

Monthly Monitoring Data



Environmental Protection Licence Number: 12693

link to EPL12693 on EPA Public Register: [Click Here](#)

Licensee: Newcastle Coal Infrastructure Group Pty Ltd, Locked Bag 6003, Hunter Region Mail Centre NSW 2310

Premises: Newcastle Coal Infrastructure Group, Cormorant Road, Kooragang NSW 2304

Date Data Obtained: 25 Sept 2025

Date Published: 26 Sept 2025

Note: On the 25th of August 2017 an amendment was made to the NCIG Environmental Protection Licence (EPL12693) which removed the requirement for ambient air quality monitoring at Points 7-10 and 14-15. However, NCIG will continue to publish ambient air quality data for these locations previously listed in EPL12693 for the interest of the public.

Depositional Dust Monitoring

Sample Period: 7 July 2025 – 6 Aug 2025

Units of Measure: Insoluble Solids (grams per square metre per month (g/m²/month))

Frequency: Monthly

	DG3 (Kooragang Island)	DG4 (Mayfield Sport Rec Club)	DG5 (Mayfield West)	DG6 (Sandgate)
Depositional Dust	0.5	0.7	0.7	5.1

High Volume Air Sampling

Units of measure: Micrograms per cubic metre (µg/m³)

Frequency: Weekly

	HVAS 1 (Steel River, Mayfield West)			HVAS 2 (Crebert Street, Mayfield)			
	TSP	PM10			TSP		PM10
06-Jul-25	-	06-Jul-25	-	05-Jul-25	29	05-Jul-25	18
12-Jul-25	-	12-Jul-25	-	11-Jul-25	45	11-Jul-25	9
18-Jul-25	48.4	18-Jul-25	7.3	17-Jul-25	45	17-Jul-25	25
24-Jul-25	18.7	24-Jul-25	17.7	23-Jul-25	17	23-Jul-25	11
30-Jul-25	35.2	30-Jul-25	17.1	29-Jul-25	28	29-Jul-25	15

Discharge Water Quality Monitoring

Date data Obtained: 16/7/25

Discharge Quality Monitoring – Pont 34

Sample Dates: 1/7/25 – 10/7/25

Frequency requirement: Daily during discharge

Pollutant	Units of Measure	No. times measured during discharge event	Min value	Mean value	Median Value	Max value
Oil and Grease	mg/L	10	<5	<5	<5	<5
pH	pH units	10	7.0	7.8	7.9	8.2
Total Suspended Solids	mg/L	10	12	15.7	14	24

NB: Sample period is a 24-hour period on each of the above dates | TSP = Total Suspended Particulates | PM10 = Particulate Matter <10 microns

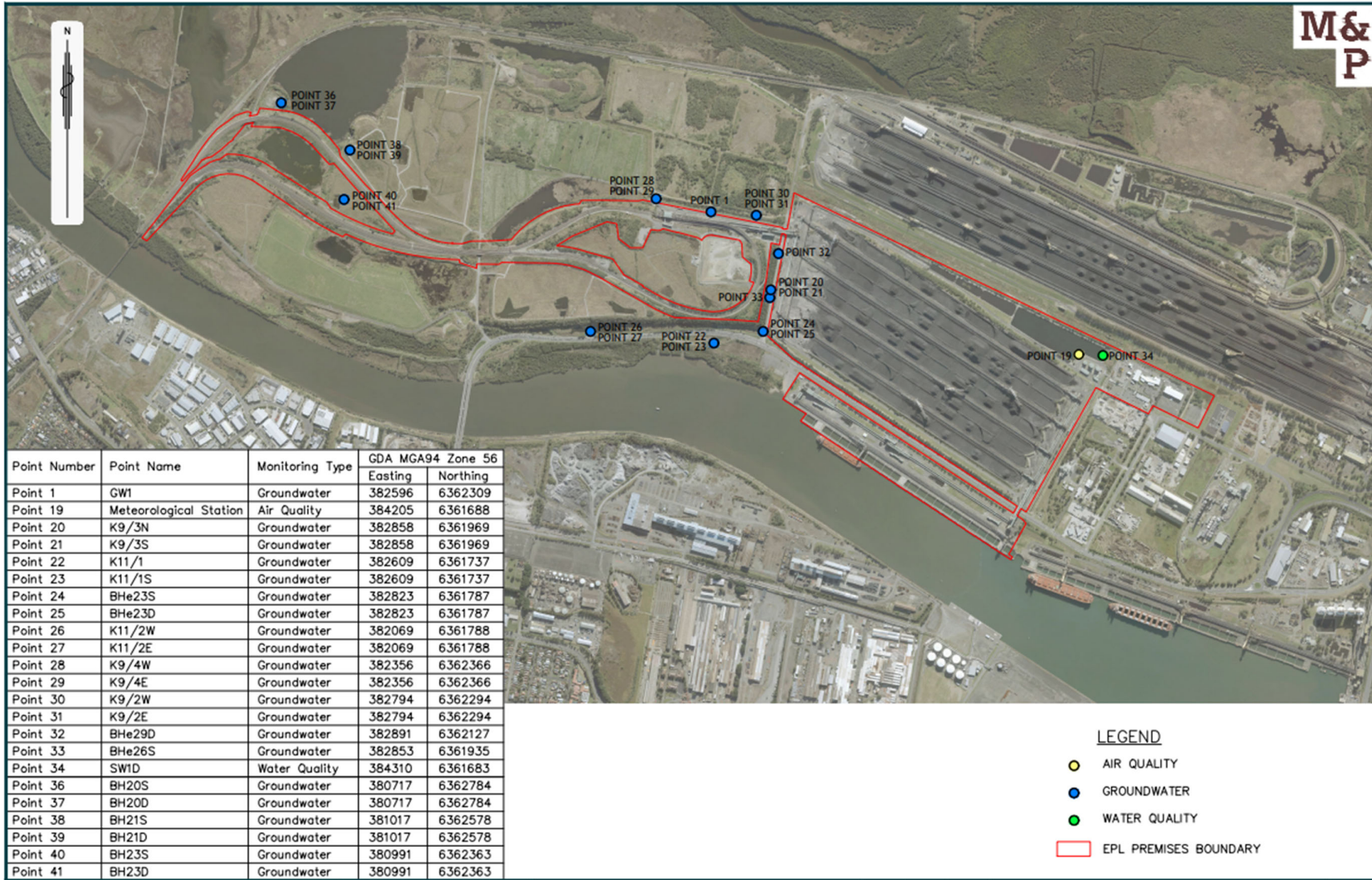


Figure 1: Groundwater, Surface Water and Additional Ambient Air Quality Monitoring Locations.