

Monthly Monitoring Data



Environmental Protection Licence Number: 12693

link to EPL12693 on EPA Public Register: [Click Here](#)

Licensee: Newcastle Coal Infrastructure Group Pty Ltd, Locked Bag 6003, Hunter Region Mail Centre NSW 2310

Premises: Newcastle Coal Infrastructure Group, Cormorant Road, Kooragang NSW 2304

Date Data Obtained: 10 February 2026

Date Published: 17 February 2026

Note: On the 25th of August 2017 an amendment was made to the NCIG Environmental Protection Licence (EPL12693) which removed the requirement for ambient air quality monitoring at Points 7-10 and 14-15. However, NCIG will continue to publish ambient air quality data for these locations previously listed in EPL12693 for the interest of the public.

Depositional Dust Monitoring

Sample Period: 05 Dec 2025 – 02 Jan 2026

Units of Measure: Insoluble Solids (grams per square metre per month (g/m²/month))

Frequency: Monthly

	Monitoring Point 7 - DG3 (Kooragang Island)	Monitoring Point 8 - DG4 (Mayfield Sport Rec Club)	Monitoring Point 9 - DG5 (Mayfield West)	Monitoring Point 10 - DG6 (Sandgate)
Depositional Dust	1.0	1.3	1.2	2.0

High Volume Air Sampling

Units of measure: Micrograms per cubic metre (µg/m³)

Frequency: Weekly

	Monitoring Point 14 - HVAS 1 (Steel River, Mayfield West)			Monitoring Point 15 - HVAS 2 (Crebert Street, Mayfield)			
	TSP	PM10		TSP		PM10	
03-Dec-25	86.1	03-Dec-25	56.6	02-Dec-25	34	02-Dec-25	13
09-Dec-25	73.2	09-Dec-25	69.6	08-Dec-25	93	08-Dec-25	21
15-Dec-25	51.8	15-Dec-25	37.3	14-Dec-25	28	14-Dec-25	13
21-Dec-25	50.9	21-Dec-25	32.0	20-Dec-25	36	20-Dec-25	22
27-Dec-25	22.5	27-Dec-25	12.7	26-Dec-25	34	26-Dec-25	20

NB: Sample period is a 24-hour period on each of the above dates | TSP = Total Suspended Particulates | PM10 = Particulate Matter <10 microns |

6 Monthly Groundwater Monitoring

Sampling Point 1, 38, 39 (Background Monitoring Wells)

Groundwater Sampling Point 1 (GW1)

Sample Date: 1 Dec 2025

Pollutant	Units of Measure	Frequency	Recorded Value
pH	pH units	Every 6 Months	7.0
Conductivity	µS/cm	Every 6 Months	14000
Bromide	mg/L	Every 6 Months	15
Aluminium	mg/L	Every 6 Months	<0.01
Arsenic	mg/L	Every 6 Months	0.01
Cadmium	mg/L	Every 6 Months	0.002
Copper	mg/L	Every 6 Months	<0.0001
Manganese	mg/L	Every 6 Months	<0.001
Nickel	mg/L	Every 6 Months	0.220
Zinc	mg/L	Every 6 Months	<0.001
Iron	mg/L	Every 6 Months	0.007
Total PAH	µg/L	Every 6 Months	<0.1
TPH C6-9 Fraction	µg/L	Every 6 Months	<10
TPH C10-14 Fraction	µg/L	Every 6 Months	<50
TPH C15-28 Fraction	µg/L	Every 6 Months	<100
TPH C29-36 Fraction	µg/L	Every 6 Months	<100
Cyanide (free)	mg/L	Every 6 Months	<0.004
Cyanide (total)	mg/L	Every 6 Months	<0.004

Groundwater Sampling Point 38 (BH21S)

Sample Date: 2 Dec 2025

Pollutant	Units of Measure	Frequency	Recorded Value
pH	pH units	Every 6 Months	10.70
Conductivity	µS/cm	Every 6 Months	2000
Bromide	mg/L	Every 6 Months	2.3
Aluminium	mg/L	Every 6 Months	0.18
Arsenic	mg/L	Every 6 Months	0.003
Cadmium	mg/L	Every 6 Months	<0.0001
Copper	mg/L	Every 6 Months	<0.001
Manganese	mg/L	Every 6 Months	<0.005
Nickel	mg/L	Every 6 Months	0.002
Zinc	mg/L	Every 6 Months	0.005
Iron	mg/L	Every 6 Months	0.12
Total PAH	µg/L	Every 6 Months	280
TPH C6-9 Fraction	µg/L	Every 6 Months	20
TPH C10-14 Fraction	µg/L	Every 6 Months	440
TPH C15-28 Fraction	µg/L	Every 6 Months	<100
TPH C29-36 Fraction	µg/L	Every 6 Months	<100
Cyanide (free)	mg/L	Every 6 Months	0.006
Cyanide (total)	mg/L	Every 6 Months	0.26

Groundwater Sampling Point 39 (BH21D)

Sample Date: 2 Dec 2025

Pollutant	Units of Measure	Frequency	Recorded Value
pH	pH units	Every 6 Months	7.20
Conductivity	µS/cm	Every 6 Months	9900
Bromide	mg/L	Every 6 Months	13
Aluminium	mg/L	Every 6 Months	0.02
Arsenic	mg/L	Every 6 Months	0.001
Cadmium	mg/L	Every 6 Months	<0.0001
Copper	mg/L	Every 6 Months	<0.001
Manganese	mg/L	Every 6 Months	0.270
Nickel	mg/L	Every 6 Months	0.001
Zinc	mg/L	Every 6 Months	0.004
Iron	mg/L	Every 6 Months	3.0
Total PAH	µg/L	Every 6 Months	120
TPH C6-9 Fraction	µg/L	Every 6 Months	<10
TPH C10-14 Fraction	µg/L	Every 6 Months	240
TPH C15-28 Fraction	µg/L	Every 6 Months	<100
TPH C29-36 Fraction	µg/L	Every 6 Months	<100
Cyanide (free)	mg/L	Every 6 Months	<0.004
Cyanide (total)	mg/L	Every 6 Months	0.012

Sampling Point 20,21,22,23,36,37,40,41 (Regular Monitoring Wells)

Groundwater Sampling Point 20 (K9/3N)

Sample Date: 1 Dec 2025

Pollutant	Units of Measure	Frequency	Recorded Value	Trigger met (Yes/No)*
pH	pH units	Every 6 Months	7.31	No
Conductivity	µS/cm	Every 6 Months	17200	No
Bromide	mg/L	Every 6 Months	19	No
Aluminium	mg/L	Every 6 Months	<0.01	No
Arsenic	mg/L	Every 6 Months	<0.001	No
Cadmium	mg/L	Every 6 Months	<0.0001	No
Copper	mg/L	Every 6 Months	<0.001	No
Manganese	mg/L	Every 6 Months	0.90**	Yes
Nickel	mg/L	Every 6 Months	<0.001	No
Zinc	mg/L	Every 6 Months	0.002	No
Iron	mg/L	Every 6 Months	0.03	No
Total PAH	µg/L	Every 6 Months	<0.1	No
TPH C6-9 Fraction	µg/L	Every 6 Months	<10	No
TPH C10-14 Fraction	µg/L	Every 6 Months	<50	No
TPH C15-28 Fraction	µg/L	Every 6 Months	<100	No
TPH C29-36 Fraction	µg/L	Every 6 Months	<100	No
Cyanide (free)	mg/L	Every 6 Months	<0.004	No
Cyanide (total)	mg/L	Every 6 Months	<0.004	No

Note: If trigger level is met, actions listed in Condition E1.2 of EPL12693 are to be followed.

* Trigger Condition 1 and 2 recalculated each sampling round.

** Resample result

Groundwater Sampling Point 21 (K9/3S)

Sample Date: 1 Dec 2025

Pollutant	Units of Measure	Frequency	Recorded Value	Exceedance (Yes/No)*
pH	pH units	Every 6 Months	8.0	No
Conductivity	µS/cm	Every 6 Months	2200	No
Bromide	mg/L	Every 6 Months	1.5	No
Aluminium	mg/L	Every 6 Months	0.02	No
Arsenic	mg/L	Every 6 Months	0.003	No
Cadmium	mg/L	Every 6 Months	<0.0001	No
Copper	mg/L	Every 6 Months	<0.001	No
Manganese	mg/L	Every 6 Months	0.330	No
Nickel	mg/L	Every 6 Months	<0.001	No
Zinc	mg/L	Every 6 Months	0.001	No
Iron	mg/L	Every 6 Months	0.05	No
Total PAH	µg/L	Every 6 Months	<0.1	No
TPH C6-9 Fraction	µg/L	Every 6 Months	<10	No
TPH C10-14 Fraction	µg/L	Every 6 Months	<50	No
TPH C15-28 Fraction	µg/L	Every 6 Months	<100	No
TPH C29-36 Fraction	µg/L	Every 6 Months	<100	No
Cyanide (free)	mg/L	Every 6 Months	<0.004	No
Cyanide (total)	mg/L	Every 6 Months	<0.004	No

Note: If trigger level is met, actions listed in Condition E1.2 of EPL12693 are to be followed.

* Trigger Condition 1 and 2 recalculated each sampling round.

Groundwater Sampling Point 22 (K11/1)

Sample Date: 2 Dec 2025

Pollutant	Units of Measure	Frequency	Recorded Value	Exceedance (Yes/No)*
pH	pH units	Every 6 Months	7.50	No
Conductivity	µS/cm	Every 6 Months	500	No
Bromide	mg/L	Every 6 Months	1.1	No
Aluminium	mg/L	Every 6 Months	<0.5	No
Arsenic	mg/L	Every 6 Months	<0.01	No
Cadmium	mg/L	Every 6 Months	<0.001	No
Copper	mg/L	Every 6 Months	<0.0001	No
Manganese	mg/L	Every 6 Months	<0.001	No
Nickel	mg/L	Every 6 Months	0.37	No
Zinc	mg/L	Every 6 Months	<0.001	No
Iron	mg/L	Every 6 Months	0.004	No
Total PAH	µg/L	Every 6 Months	0.57	No
TPH C6-9 Fraction	µg/L	Every 6 Months	<10	No
TPH C10-14 Fraction	µg/L	Every 6 Months	<50	No
TPH C15-28 Fraction	µg/L	Every 6 Months	<100	No
TPH C29-36 Fraction	µg/L	Every 6 Months	<100	No
Cyanide (free)	mg/L	Every 6 Months	<0.004	No
Cyanide (total)	mg/L	Every 6 Months	<0.004	No

Note: If trigger level is met, actions listed in Condition E1.2 of EPL12693 are to be followed.

* Trigger Condition 1 and 2 recalculated each sampling round.

Groundwater Sampling Point 23 (K11/1S)

Sample Date: 2 Dec 2025

Pollutant	Units of Measure	Frequency	Recorded Value	Exceedance (Yes/No)*
pH	pH units	Every 6 Months	7.8	No
Conductivity	µS/cm	Every 6 Months	6000	No
Bromide	mg/L	Every 6 Months	5.8	No
Aluminium	mg/L	Every 6 Months	<0.01**	No
Arsenic	mg/L	Every 6 Months	<0.001	No
Cadmium	mg/L	Every 6 Months	<0.0001	No
Copper	mg/L	Every 6 Months	<0.001	No
Manganese	mg/L	Every 6 Months	0.069	No
Nickel	mg/L	Every 6 Months	<0.001	No
Zinc	mg/L	Every 6 Months	0.006	No
Iron	mg/L	Every 6 Months	0.04**	No
Total PAH	µg/L	Every 6 Months	0.73	No
TPH C6-9 Fraction	µg/L	Every 6 Months	<10	No
TPH C10-14 Fraction	µg/L	Every 6 Months	<50	No
TPH C15-28 Fraction	µg/L	Every 6 Months	<100	No
TPH C29-36 Fraction	µg/L	Every 6 Months	<100	No
Cyanide (free)	mg/L	Every 6 Months	<0.004	No
Cyanide (total)	mg/L	Every 6 Months	<0.004	No

Note: If trigger level is met, actions listed in Condition E1.2 of EPL12693 are to be followed.

* Trigger Condition 1 and 2 recalculated each sampling round.

** Resample result (2/1/26)

Groundwater Sampling Point 36 (BH20S)

Sample Date: 2 Dec 2025

Pollutant	Units of Measure	Frequency	Recorded Value	Exceedance (Yes/No)*
pH	pH units	Every 6 Months	6.90	No
Conductivity	µS/cm	Every 6 Months	1100	No
Bromide	mg/L	Every 6 Months	<0.5	No
Aluminium	mg/L	Every 6 Months	<0.01	No
Arsenic	mg/L	Every 6 Months	0.002	No
Cadmium	mg/L	Every 6 Months	<0.0001	No
Copper	mg/L	Every 6 Months	<0.001	No
Manganese	mg/L	Every 6 Months	2.8	No
Nickel	mg/L	Every 6 Months	0.005	No
Zinc	mg/L	Every 6 Months	0.014	No
Iron	mg/L	Every 6 Months	1.7	No
Total PAH	µg/L	Every 6 Months	<0.1	No
TPH C6-9 Fraction	µg/L	Every 6 Months	<10	No
TPH C10-14 Fraction	µg/L	Every 6 Months	<50	No
TPH C15-28 Fraction	µg/L	Every 6 Months	<100	No
TPH C29-36 Fraction	µg/L	Every 6 Months	<100	No
Cyanide (free)	mg/L	Every 6 Months	<0.004	No
Cyanide (total)	mg/L	Every 6 Months	<0.004	No

Note: If trigger level is met, actions listed in Condition E1.2 of EPL12693 are to be followed.

* Trigger Condition 1 and 2 recalculated each sampling round.

Groundwater Sampling Point 37 (BH20D)

Sample Date: 2 Dec 2025

Pollutant	Units of Measure	Frequency	Recorded Value	Exceedance (Yes/No)*
pH	pH units	Every 6 Months	6.0	No
Conductivity	µS/cm	Every 6 Months	46000**	Yes
Bromide	mg/L	Every 6 Months	60	Yes
Aluminium	mg/L	Every 6 Months	<0.01	No
Arsenic	mg/L	Every 6 Months	0.009**	Yes
Cadmium	mg/L	Every 6 Months	<0.0001	No
Copper	mg/L	Every 6 Months	<0.001	No
Manganese	mg/L	Every 6 Months	12**	Yes
Nickel	mg/L	Every 6 Months	0.036**	Yes
Zinc	mg/L	Every 6 Months	0.006**	No
Iron	mg/L	Every 6 Months	37	No
Total PAH	µg/L	Every 6 Months	0.37	No
TPH C6-9 Fraction	µg/L	Every 6 Months	<10	No
TPH C10-14 Fraction	µg/L	Every 6 Months	<50	No
TPH C15-28 Fraction	µg/L	Every 6 Months	<100	No
TPH C29-36 Fraction	µg/L	Every 6 Months	<100	No
Cyanide (free)	mg/L	Every 6 Months	<0.004	No
Cyanide (total)	mg/L	Every 6 Months	<0.004	No

Note: If trigger level is met, actions listed in Condition E1.2 of EPL12693 are to be followed. These actions include notifying the EPA and resampling the location to confirm the elevated concentration.

* Trigger Condition 1 and 2 recalculated each sampling round.

** Resample result (2/1/26)

Groundwater Sampling Point 40 (BH23S)

Sample Date: 2 Dec 2025

Pollutant	Units of Measure	Frequency	Recorded Value	Exceedance (Yes/No)*
pH	pH units	Every 6 Months	8.2	No
Conductivity	µS/cm	Every 6 Months	1100**	No
Bromide	mg/L	Every 6 Months	0.6	No
Aluminium	mg/L	Every 6 Months	0.02	No
Arsenic	mg/L	Every 6 Months	0.001	No
Cadmium	mg/L	Every 6 Months	<0.0001	No
Copper	mg/L	Every 6 Months	<0.001	No
Manganese	mg/L	Every 6 Months	0.520	No
Nickel	mg/L	Every 6 Months	<0.001	No
Zinc	mg/L	Every 6 Months	0.002	No
Iron	mg/L	Every 6 Months	0.09	No
Total PAH	µg/L	Every 6 Months	3.9	No
TPH C6-9 Fraction	µg/L	Every 6 Months	<10	No
TPH C10-14 Fraction	µg/L	Every 6 Months	<50	No
TPH C15-28 Fraction	µg/L	Every 6 Months	<100	No
TPH C29-36 Fraction	µg/L	Every 6 Months	<100	No
Cyanide (free)	mg/L	Every 6 Months	<0.004	No
Cyanide (total)	mg/L	Every 6 Months	0.007	No

Note: If trigger level is met, actions listed in Condition E1.2 of EPL12693 are to be followed.

* Trigger Condition 1 and 2 recalculated each sampling round.

** Resample result (2/1/26)

Groundwater Sampling Point 41 (BH23D)

Sample Date: 2 Dec 2025

Pollutant	Units of Measure	Frequency	Recorded Value	Exceedance (Yes/No)*
pH	pH units	Every 6 Months	6.90	No
Conductivity	µS/cm	Every 6 Months	15000	No
Bromide	mg/L	Every 6 Months	26	No
Aluminium	mg/L	Every 6 Months	<0.01	No
Arsenic	mg/L	Every 6 Months	<0.001	No
Cadmium	mg/L	Every 6 Months	<0.0001	No
Copper	mg/L	Every 6 Months	<0.001	No
Manganese	mg/L	Every 6 Months	0.91	No
Nickel	mg/L	Every 6 Months	0.003	No
Zinc	mg/L	Every 6 Months	0.023	Yes
Iron	mg/L	Every 6 Months	9	No
Total PAH	µg/L	Every 6 Months	<0.1	No
TPH C6-9 Fraction	µg/L	Every 6 Months	<10	No
TPH C10-14 Fraction	µg/L	Every 6 Months	<50	No
TPH C15-28 Fraction	µg/L	Every 6 Months	<100	No
TPH C29-36 Fraction	µg/L	Every 6 Months	<100	No
Cyanide (free)	mg/L	Every 6 Months	<0.004	No
Cyanide (total)	mg/L	Every 6 Months	0.007	No

Note: If trigger level is met, actions listed in Condition E1.2 of EPL12693 are to be followed.

* Trigger Condition 1 and 2 recalculated each sampling round.

Sampling Point 24,25,26,27,28,29,30,31,32,33 (Additional Contingency Wells)

Groundwater Sampling Point BHe23S (Note: BHe23S has been used as a substitute to Monitoring Point 24 (K11/3E), which no longer exists due to previous impacts to the bore).

Sample Date: N/A

Note: Sampling Point BHe23S was unable to be sampled in this monitoring round as the well was dry.

Groundwater Sampling Point 25 (BHe23D) (Note: BHe23D has been used as a substitute to Monitoring Point 25 (K11/3W), which no longer exists due to previous impacts to the bore).

Sample Date: 2 Dec 2025

Pollutant	Units of Measure	Frequency	Recorded Value
pH	pH units	Special Frequency 1	7.20
Conductivity	µS/cm	Special Frequency 1	13000
Bromide	mg/L	Special Frequency 1	15
Aluminium	mg/L	Special Frequency 1	<0.01
Arsenic	mg/L	Special Frequency 1	<0.001
Cadmium	mg/L	Special Frequency 1	<0.0001
Copper	mg/L	Special Frequency 1	<0.001
Manganese	mg/L	Special Frequency 1	1
Nickel	mg/L	Special Frequency 1	<0.001
Zinc	mg/L	Special Frequency 1	0.005
Iron	mg/L	Special Frequency 1	0.33
Total PAH	µg/L	Special Frequency 1	<0.1
TPH C6-9 Fraction	µg/L	Special Frequency 1	<10
TPH C10-14 Fraction	µg/L	Special Frequency 1	<50
TPH C15-28 Fraction	µg/L	Special Frequency 1	<100
TPH C29-36 Fraction	µg/L	Special Frequency 1	<100
Cyanide (free)	mg/L	Special Frequency 1	<0.004
Cyanide (total)	mg/L	Special Frequency 1	<0.004

Note: For the purposes of the table(s) above Special Frequency 1 means the collection of samples on a six monthly basis if trigger conditions specified in condition E1.1 of EPL12693 are met.

Groundwater Sampling Point 26 (K11/2W)

Sample Date: 1 Dec 2025

Pollutant	Units of Measure	Frequency	Recorded Value
pH	pH units	Special Frequency 1	7.5
Conductivity	µS/cm	Special Frequency 1	5600
Bromide	mg/L	Special Frequency 1	4.4
Aluminium	mg/L	Special Frequency 1	0.02
Arsenic	mg/L	Special Frequency 1	<0.001
Cadmium	mg/L	Special Frequency 1	<0.0001
Copper	mg/L	Special Frequency 1	<0.001
Manganese	mg/L	Special Frequency 1	0.048
Nickel	mg/L	Special Frequency 1	<0.001
Zinc	mg/L	Special Frequency 1	0.003
Iron	mg/L	Special Frequency 1	0.1
Total PAH	µg/L	Special Frequency 1	<10
TPH C6-9 Fraction	µg/L	Special Frequency 1	<50
TPH C10-14 Fraction	µg/L	Special Frequency 1	<100
TPH C15-28 Fraction	µg/L	Special Frequency 1	<100
TPH C29-36 Fraction	µg/L	Special Frequency 1	<50
Cyanide (free)	mg/L	Special Frequency 1	<0.004
Cyanide (total)	mg/L	Special Frequency 1	<0.004

Note: For the purposes of the table(s) above Special Frequency 1 means the collection of samples on a six monthly basis if trigger conditions specified in condition E1.1 of EPL12693 are met.

Groundwater Sampling Point 27 (K11/2E)

Sample Date: 1 Dec 2025

Pollutant	Units of Measure	Frequency	Recorded Value
pH	pH units	Special Frequency 1	7.2
Conductivity	µS/cm	Special Frequency 1	940
Bromide	mg/L	Special Frequency 1	<0.5
Aluminium	mg/L	Special Frequency 1	<0.01
Arsenic	mg/L	Special Frequency 1	0.001
Cadmium	mg/L	Special Frequency 1	<0.0001
Copper	mg/L	Special Frequency 1	<0.001
Manganese	mg/L	Special Frequency 1	0.490
Nickel	mg/L	Special Frequency 1	<0.001
Zinc	mg/L	Special Frequency 1	0.007
Iron	mg/L	Special Frequency 1	6.5
Total PAH	µg/L	Special Frequency 1	<0.1
TPH C6-9 Fraction	µg/L	Special Frequency 1	<10
TPH C10-14 Fraction	µg/L	Special Frequency 1	<50
TPH C15-28 Fraction	µg/L	Special Frequency 1	<100
TPH C29-36 Fraction	µg/L	Special Frequency 1	<100
Cyanide (free)	mg/L	Special Frequency 1	<0.004
Cyanide (total)	mg/L	Special Frequency 1	<0.004

Note: For the purposes of the table(s) above Special Frequency 1 means the collection of samples on a six monthly basis if trigger conditions specified in condition E1.1 of EPL12693 are met.

Groundwater Sampling Point 28 (K9/4W)

Sample Date: 1 Dec 2025

Pollutant	Units of Measure	Frequency	Recorded Value
pH	pH units	Special Frequency 1	7.1
Conductivity	µS/cm	Special Frequency 1	6300
Bromide	mg/L	Special Frequency 1	4.1
Aluminium	mg/L	Special Frequency 1	<0.01
Arsenic	mg/L	Special Frequency 1	<0.001
Cadmium	mg/L	Special Frequency 1	<0.0001
Copper	mg/L	Special Frequency 1	<0.001
Manganese	mg/L	Special Frequency 1	0.180
Nickel	mg/L	Special Frequency 1	<0.001
Zinc	mg/L	Special Frequency 1	0.006
Iron	mg/L	Special Frequency 1	2.5
Total PAH	µg/L	Special Frequency 1	<0.1
TPH C6-9 Fraction	µg/L	Special Frequency 1	<10
TPH C10-14 Fraction	µg/L	Special Frequency 1	<50
TPH C15-28 Fraction	µg/L	Special Frequency 1	<100
TPH C29-36 Fraction	µg/L	Special Frequency 1	<100
Cyanide (free)	mg/L	Special Frequency 1	<0.004
Cyanide (total)	mg/L	Special Frequency 1	<0.004

Note: For the purposes of the table(s) above Special Frequency 1 means the collection of samples on a six monthly basis if trigger conditions specified in condition E1.1 of EPL12693 are met.

Groundwater Sampling Point 29 (K9/4E)

Sample Date: 1 Dec 2025

Pollutant	Units of Measure	Frequency	Recorded Value
pH	pH units	Special Frequency 1	7.3
Conductivity	µS/cm	Special Frequency 1	4700
Bromide	mg/L	Special Frequency 1	3.8
Aluminium	mg/L	Special Frequency 1	0.02
Arsenic	mg/L	Special Frequency 1	0.008
Cadmium	mg/L	Special Frequency 1	<0.0001
Copper	mg/L	Special Frequency 1	<0.001
Manganese	mg/L	Special Frequency 1	1.40
Nickel	mg/L	Special Frequency 1	<0.001
Zinc	mg/L	Special Frequency 1	0.005
Iron	mg/L	Special Frequency 1	0.24
Total PAH	µg/L	Special Frequency 1	0.11
TPH C6-9 Fraction	µg/L	Special Frequency 1	<10
TPH C10-14 Fraction	µg/L	Special Frequency 1	<50
TPH C15-28 Fraction	µg/L	Special Frequency 1	<100
TPH C29-36 Fraction	µg/L	Special Frequency 1	<100
Cyanide (free)	mg/L	Special Frequency 1	<0.004
Cyanide (total)	mg/L	Special Frequency 1	<0.004

Note: For the purposes of the table(s) above Special Frequency 1 means the collection of samples on a six monthly basis if trigger conditions specified in condition E1.1 of EPL12693 are met.

Groundwater Sampling Point 30 (K9/2W)

Sample Date: 1 Dec 2025

Pollutant	Units of Measure	Frequency	Recorded Value
pH	pH units	Special Frequency 1	7.6
Conductivity	µS/cm	Special Frequency 1	2100
Bromide	mg/L	Special Frequency 1	1.4
Aluminium	mg/L	Special Frequency 1	0.02
Arsenic	mg/L	Special Frequency 1	0.019
Cadmium	mg/L	Special Frequency 1	<0.0001
Copper	mg/L	Special Frequency 1	<0.001
Manganese	mg/L	Special Frequency 1	0.260
Nickel	mg/L	Special Frequency 1	<0.001
Zinc	mg/L	Special Frequency 1	0.003
Iron	mg/L	Special Frequency 1	0.02
Total PAH	µg/L	Special Frequency 1	<0.1
TPH C6-9 Fraction	µg/L	Special Frequency 1	<10
TPH C10-14 Fraction	µg/L	Special Frequency 1	<50
TPH C15-28 Fraction	µg/L	Special Frequency 1	<100
TPH C29-36 Fraction	µg/L	Special Frequency 1	<100
Cyanide (free)	mg/L	Special Frequency 1	<0.004
Cyanide (total)	mg/L	Special Frequency 1	<0.004

Note: For the purposes of the table(s) above Special Frequency 1 means the collection of samples on a six monthly basis if trigger conditions specified in condition E1.1 of EPL12693 are met.

Groundwater Sampling Point 31 (K9/2E)

Sample Date: 1 Dec 2025

Pollutant	Units of Measure	Frequency	Recorded Value
pH	pH units	Special Frequency 1	6.9
Conductivity	µS/cm	Special Frequency 1	28000
Bromide	mg/L	Special Frequency 1	34
Aluminium	mg/L	Special Frequency 1	<0.01
Arsenic	mg/L	Special Frequency 1	<0.001
Cadmium	mg/L	Special Frequency 1	0.0001
Copper	mg/L	Special Frequency 1	<0.001
Manganese	mg/L	Special Frequency 1	0.610
Nickel	mg/L	Special Frequency 1	<0.001
Zinc	mg/L	Special Frequency 1	0.003
Iron	mg/L	Special Frequency 1	0.52
Total PAH	µg/L	Special Frequency 1	0.13
TPH C6-9 Fraction	µg/L	Special Frequency 1	<10
TPH C10-14 Fraction	µg/L	Special Frequency 1	<50
TPH C15-28 Fraction	µg/L	Special Frequency 1	<100
TPH C29-36 Fraction	µg/L	Special Frequency 1	<100
Cyanide (free)	mg/L	Special Frequency 1	<0.004
Cyanide (total)	mg/L	Special Frequency 1	<0.004

Note: For the purposes of the table(s) above Special Frequency 1 means the collection of samples on a six monthly basis if trigger conditions specified in condition E1.1 of EPL12693 are met.

Groundwater Sampling Point 32 (BHe29D) (Note: BHe29D has been used as a substitute to Monitoring Point 32 (K10/4W), which no longer exists due to previous impacts to the bore).

Sample Date: 2 Dec 2025

Pollutant	Units of Measure	Frequency	Recorded Value
pH	pH units	Special Frequency 1	7.4
Conductivity	µS/cm	Special Frequency 1	7500
Bromide	mg/L	Special Frequency 1	8.0
Aluminium	mg/L	Special Frequency 1	<0.01
Arsenic	mg/L	Special Frequency 1	<0.001
Cadmium	mg/L	Special Frequency 1	<0.0001
Copper	mg/L	Special Frequency 1	<0.001
Manganese	mg/L	Special Frequency 1	0.15
Nickel	mg/L	Special Frequency 1	<0.001
Zinc	mg/L	Special Frequency 1	0.002
Iron	mg/L	Special Frequency 1	0.09
Total PAH	µg/L	Special Frequency 1	<0.1
TPH C6-9 Fraction	µg/L	Special Frequency 1	<10
TPH C10-14 Fraction	µg/L	Special Frequency 1	<50
TPH C15-28 Fraction	µg/L	Special Frequency 1	<100
TPH C29-36 Fraction	µg/L	Special Frequency 1	<100
Cyanide (free)	mg/L	Special Frequency 1	<0.004
Cyanide (total)	mg/L	Special Frequency 1	<0.004

Note: For the purposes of the table(s) above Special Frequency 1 means the collection of samples on a six monthly basis if trigger conditions specified in condition E1.1 of EPL12693 are met.

Groundwater Sampling Point 33 (BHe26S) (Note: BHe26S has been used as a substitute to Monitoring Point 33 (DM10), which no longer exists due to previous impacts to the bore).

Sample Date: 2 Dec 2025

Pollutant	Units of Measure	Frequency	Recorded Value
pH	pH units	Special Frequency 1	8.3
Conductivity	µS/cm	Special Frequency 1	2300
Bromide	mg/L	Special Frequency 1	1.6
Aluminium	mg/L	Special Frequency 1	0.02
Arsenic	mg/L	Special Frequency 1	0.004
Cadmium	mg/L	Special Frequency 1	<0.0001
Copper	mg/L	Special Frequency 1	<0.001
Manganese	mg/L	Special Frequency 1	0.16
Nickel	mg/L	Special Frequency 1	<0.001
Zinc	mg/L	Special Frequency 1	0.005
Iron	mg/L	Special Frequency 1	0.02
Total PAH	µg/L	Special Frequency 1	0.02
TPH C6-9 Fraction	µg/L	Special Frequency 1	<10
TPH C10-14 Fraction	µg/L	Special Frequency 1	<50
TPH C15-28 Fraction	µg/L	Special Frequency 1	<100
TPH C29-36 Fraction	µg/L	Special Frequency 1	<100
Cyanide (free)	mg/L	Special Frequency 1	<0.004
Cyanide (total)	mg/L	Special Frequency 1	<0.004

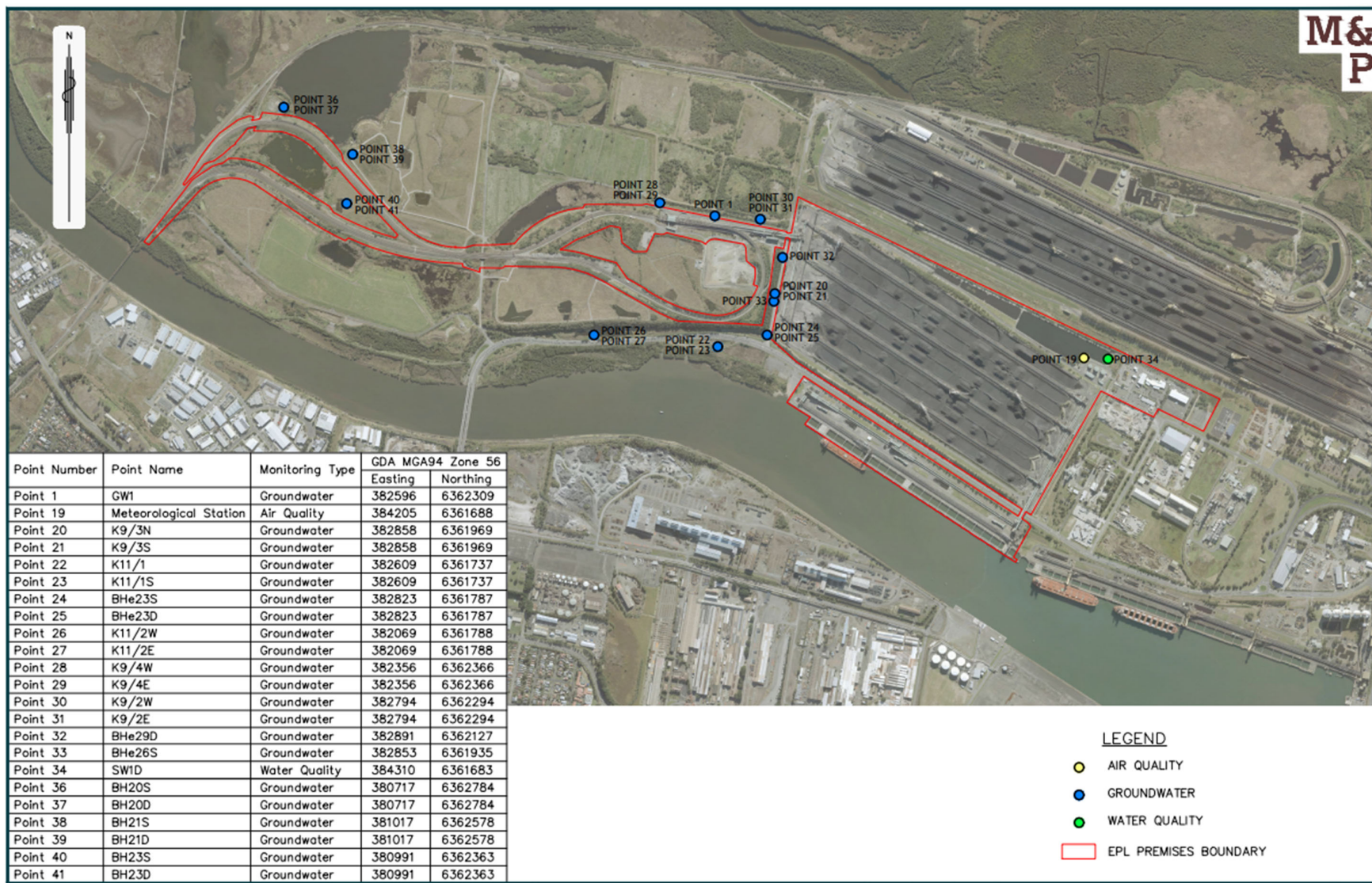


Figure 1: Groundwater, Surface Water and Additional Ambient Air Quality Monitoring Locations.